

1992 2017



**LAKE GARDENS
WOMEN AND CHILDREN
DEVELOPMENT CENTRE**

ANNUAL REPORT 2017-18



LAKE GARDENS WOMEN AND CHILDREN DEVELOPMENT CENTRE

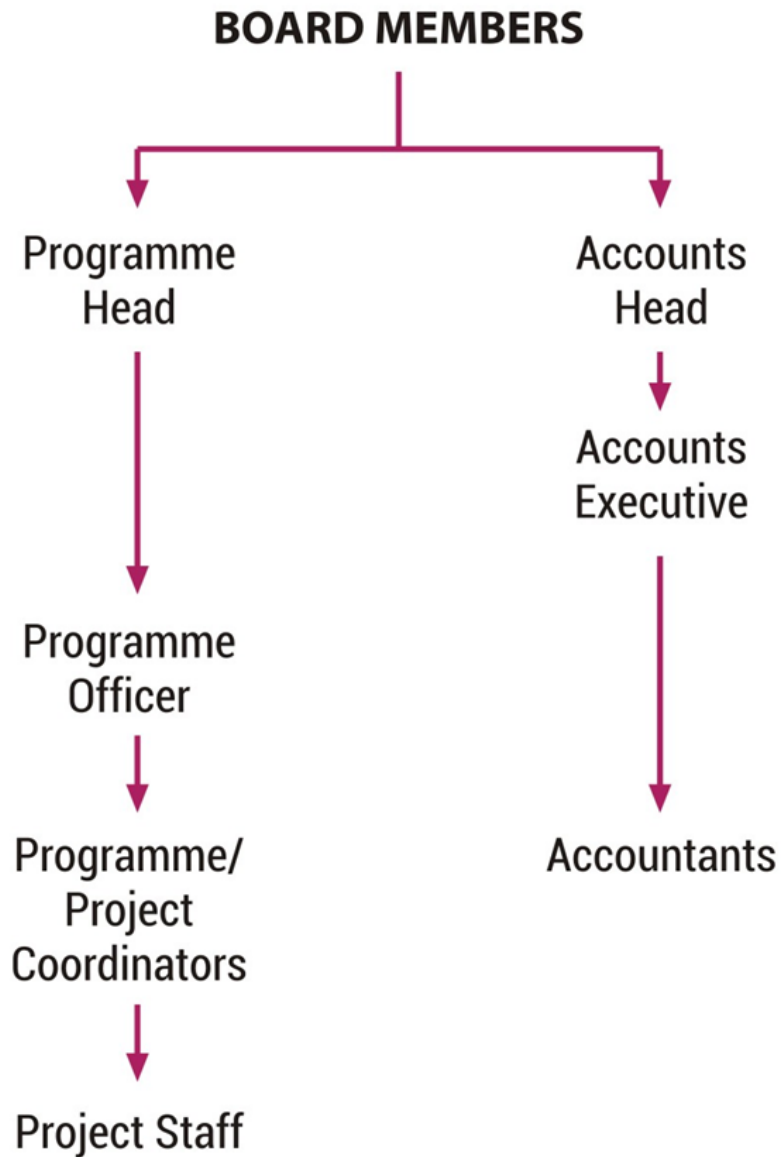
ANNUAL REPORT 2017-18

Project Office: 648 Lake Gardens, Kolkata 700045, India Tel: +91 33 24171340

Regd. Office: 164/78 Lake Gardens, Flat A14, Kolkata 700045, India

Email: lgwcdc@hotmail.com Visit us at: www.lgwcdckol.org

ORGANISATION STRUCTURE



SECRETARY'S REPORT

25 years is a long time, but for us it still seems like yesterday when our founders scripted a vision to empower women and respect womanhood.

The vision hasn't changed since. The demands have grown manifold.

A dream that started from a small house, aptly named Ankur (a germinated seed), in Lake Gardens, Kolkata today has grown into a mighty tree whose branches reach many parts in South Bengal and whose roots strengthen lives of innumerable women and children through education, skill development and social empowerment.

We celebrated our 25th year with these women to whom LGWCDC has made a difference.

Alongside, we continued with our running projects at Lake Gardens we run our project on remedial support to children and women in Lake Gardens with the support of Freunde Und Förderer; "Support to Children and Women in Selected Slums of Kolkata", where we provide crèche support to disadvantaged section of the community children; "Integrated Community Development Project" at Santoshpur; "Childhood Development Project" at Tikiapara; Outreach Medical Project at Santoshpur; THALI project at Lake Gardens combating Tuberculosis;" Campaign on Ecological Rights by Youth Network"; and "Destination Unknown" project with children on move.

A special annual day cultural program put together by the women and children of the Centre was also organised to mark the occasion of the 25th year in the presence of our founder Cecelia Sircar and her family members.

We are committed to creating deep impact in the society by empowering women and giving them opportunities to be equal - we continue taking this forward with renewed energy and hope, as we embark on a journey towards yet more challenging years ahead.

ABOUT THE ORGANISATION

Our Vision

LGWCDC looks forward to a society where women & children, especially girl children will enjoy equal rights and access to equal opportunities.

Our Mission

Integrated holistic development of marginalized women and children to ensure quality life through community development, empowerment, education, healthcare service and economic self reliance.

LGWCDC maintains Child Protection Policy and Committee against Sexual Harassment at workplace.

Aims and Objectives

- To provide centre based educational facilities to the children through joyful learning to reduce the drop-out rates and to prevent potential child labour.
- To improve the health status of girl children and their mothers through health awareness, primary health care, supplementary nutrition program and nutrition training.
- To improve the health status of underweight and malnourished and simultaneously make the community people aware regarding low cost nutritive food and healthy living practices.
- To promote and strengthen women's organisations in our project area in Lake Gardens, Howrah, Santoshpur focusing on savings and micro-credit.
- To impart skill training to the young girls and women to inculcate alternative income generation activity as another mode of occupation.
- To build up stakeholders network in the community area along with various, NGOs, GOs, clubs and government officials..

Lake Gardens Women & Children Development Centre Kolkata, known as LGWCDC is a non-profit organization founded by social scientist Ms. Cecilia Sircar with the inspiration of her late husband Mr. Shyamal Sircar and a small group of like-minded professionals and social workers in the year 1992. We are working with an integrated holistic developmental approach wherein joyful learning, remedial education, opportunities for mainstreaming, health care, vocational skills training for income generation are provided to the girl children residing in the targeted slums. The main aim was to deliver service to the deprived children and women in the society and thereby to improve the quality of life of these children who lived in the shacks along the railway track between Dhakuria and Lake Gardens Station and the slum areas of Masjidpara, Jodhpur Colony under the authority of the Kolkata Municipal Corporation.

Children are the most special creations of the earth and LGWCDC is majorly focused on nurturing the future of a child and in turn provide a better society to the youngsters. LGWCDC works on environmental, social, advocacy and human rights work. It strives to promote social or political change on a broad scale or very locally and play a critical part in developing society, improving communities, and promoting citizen participation. Majorly working in and around Kolkata, LGWCDC is an organization which builds up self reliance of the disadvantaged section to fight their own battle of disparity. It aims to protect the human rights of women and girls. LGWCDC is a developmental organization that works towards correction of social imbalances which present themselves as gender injustice and violence against women and children. LGWCDC is majorly working towards implementing integrated Women, Child and Community development projects, providing need-based interventions such as literacy for women and children, prevention of violence against the vulnerable, rescue, rehabilitation and reintegration of disadvantaged victims, action against deprivation of basic rights. We are dedicated to designing and implementing integrated programs through multi-pronged need based interventions, which are scalable and replicable. We are harmoniously developing and working with networks at community, national and international levels to promote social justice and sustainability.

Lake Gardens Women and Children Development Centre is working with an approach which is community based and which is integrated and holistic for development. Though



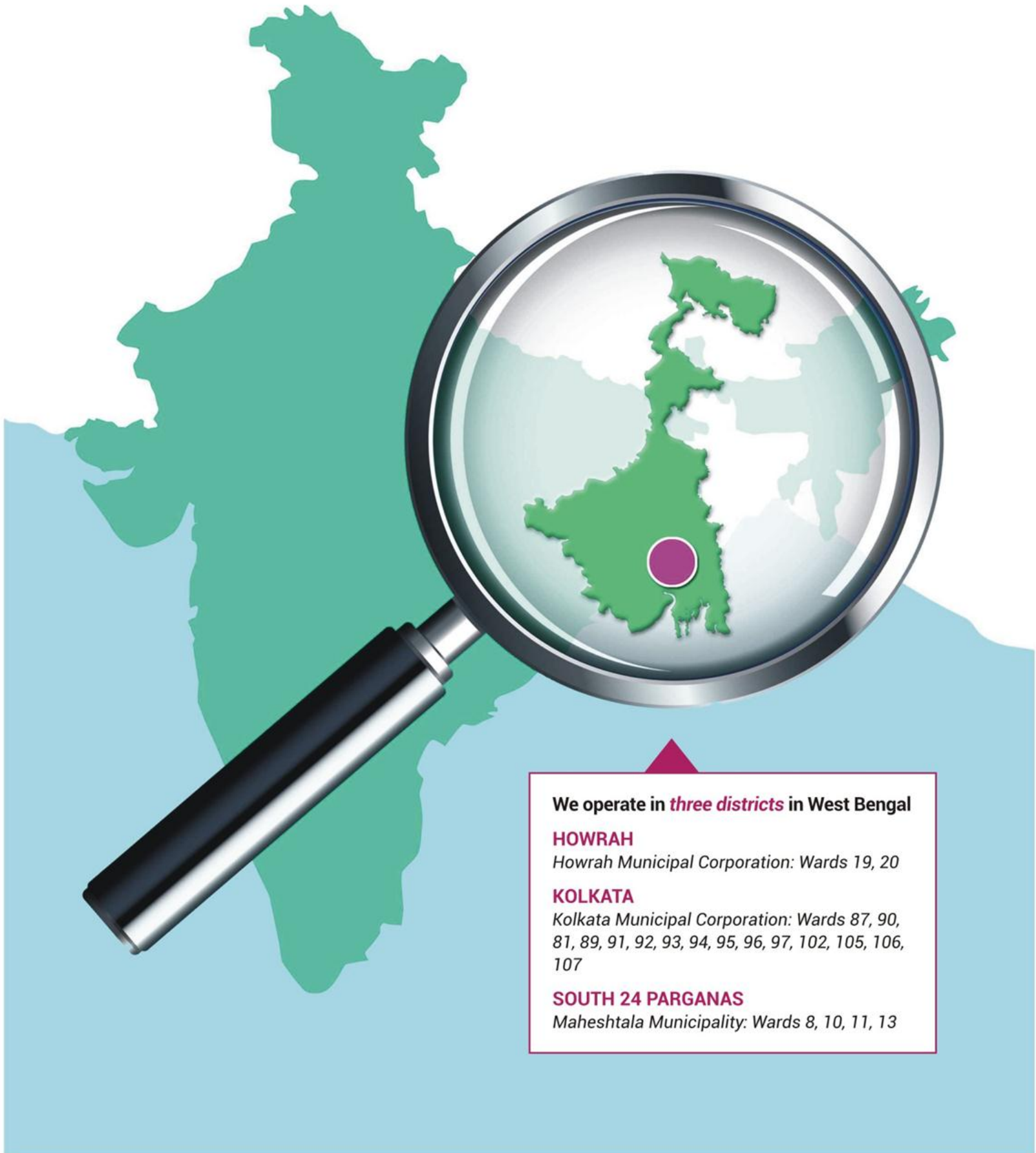
the objective of securing rights to women and children have always been the major focus of the organization, yet now the goals have become more varied and result - specific from service based approach to right based approach through its most important methodology of empowerment. It is now majorly aiming to empower the women of the community through the formation of SHGs, making community people aware regarding their basic rights, with emphasis on women's rights, child rights and health issues and education and self reliance. There are also activities catering to the problems related to malnutrition, illiteracy and poor health status. LGWCDC works at the grassroot level within the families of each members of the targeted community through awareness programs on right to education, child labour, child marriage, gender equality, food and nutrition, reproductive health, mother and child health care & communicable diseases etc. and is geared towards expanding the knowledge of both the children and women about securing their own rights.

Since the last 25 years, LGWCDC has travelled with her small footsteps beyond the threshold of Lake Gardens and Dhakuria to other districts of West Bengal. The organization expanded its span of work and has also penetrated to the adjoining districts of Howrah and South 24 Parganas of

Tikiapara, and Budge Budge Santoshpur respectively since 2010. The organization has even intervened into the minority community of Tikiapara slum in Howrah, and Santoshpur slum, which are majorly constituted of migrated population. Here the community is engulfed with poverty and all kinds of social vices which hinders its development, so the community approach in these areas are majorly on social aspects like domestic violence, health, education and ecology. Initially the main focus was to identify and screen the children of selected communities suffering from malnourishment, but during survey and later while doing community work, the field workers and our team of social workers felt that community intervention and support system is an urgent need to combat the social problems in the locality to the fullest extent and provide social treatment and continuous support to combat the same.

However, Women empowerment has always been the major objective of the organization. The projects of the organization focus on this major aspect with impetus on raising voice against oppression, awareness about rights, working for the welfare of their community, savings and personality development and most importantly fight against oppression for self reliance.

AREA OF OPERATION



We operate in *three districts* in West Bengal

HOWRAH

Howrah Municipal Corporation: Wards 19, 20

KOLKATA

Kolkata Municipal Corporation: Wards 87, 90, 81, 89, 91, 92, 93, 94, 95, 96, 97, 102, 105, 106, 107

SOUTH 24 PARGANAS

Maheshtala Municipality: Wards 8, 10, 11, 13

ONGOING ACTIVITIES

EDUCATION AND EMPOWERMENT

Remedial Coaching Centres

LGWDC is working for last 25 years in the slums adjacent to Lake Garden area. The main aim of its activity was to create awareness and facilitate the community people about their basic rights. In the early nineties, community people were not aware of their basic rights. Due to negligence and inequity, most of the girl children were deprived from education and engaged in domestic work along with their mother. The school dropout and child marriage rates among girl children were remarkably high. It was noticed that people in the community have a minimum knowledge on health and hygiene.

Considering all this our Founder Member Ms. Cecilia Sircar formed LGWDC and started its work focusing on education of the disadvantaged girl children and the hapless mothers to empower them to become self reliant. The highlights of this Project is functioning of a remedial coaching centre for the children of the slum in and around Lake Gardens and Dhakuria who are first generation literates.

The children are also inducted in various extra curricular activities like music, dance, yoga, painting and computers.



Mother and Child Course

This project also focuses on neo-natal care through its programme of Mother and Child Course where mothers of new born children between the ages of 2mths to 6 mths are given an year long opportunity to learn the art and importance of breast feeding, low cost nutritious food after six months of age, how to take care of themselves and bring up

a healthy child.

Creches for the vulnerable ones



During the survey conducted by LGWDC, it was found that some women were compelled to stay at home to take care of the children. The slum communities mostly consist of nuclear families so mothers have no option to keep the child with any other family members. The family has to fight with poverty due to low income as the father was the only bread earner of the family. Along with this father spent most of their earning in playing gambling, taking alcohol, and ganja. Domestic violence is regular incidence in the community. Through survey a need was analyzed that a mother can go for alternate income generation for the family if a day care centre is available where they can drop their child and go for work in a peaceful mind.

Through several community interaction and meeting, it was revealed that the community crèche would not only benefit the children to achieve their developmental milestone but also it would enable the mothers to engage in income generation to run the family efficiently. Apart from this several problems and requirements were identified in different communities during the survey.

The crèche facility is offered for children from six months to five years from the poorest section of the society where no proper care is provided. This facility helps the mother of the child to engage in work to maintain the family. The aim of LGWDC is to provide a safe, protected and healthy environment where they can grow up freely and learn to maintain hygiene and adopt social behavior. LGWDC instills

in the community to respect their children as they are individual human beings.

The crèche programme is directly benefitting 100 families. During pre admission home visit if it is found that the grandparents or relatives are staying at home who can take care of the child then the admission of the child is not encouraged.

The target areas from where children come to the crèches are majorly slum pockets like Gobindopur Rail colony, Rahim Ostagar Road, Lal kella, Dasnagar, Gobindopur Road, Adibasi Para, Mollahati, Masjid para, Jhilmil Basti, Hatat Basti, Jhoro Basti, Madartala, 4 DPS Road, slum adjoining railway tracks of Tollygunge slum settlement near Prince Anwar Shah & Deshapran Sashmal Road, Gariahat Road & Southern Avenue, in Ward number 81, 93 and 94 of Kolkata Municipal Corporation in West Bengal.



The major objective of this project is to create a child friendly environment for holistic development of the child and ensure child rights in the institution (crèche) and community and also strengthen the community through empowering the youths and women residing in above areas keeping in mind the Millennium Development Goal 4 (Reduce child mortality), Goal 3 (Promote gender equity and empower woman) and Goal 2 (achieve universal primary education) and Goal 7 (Environmental sustainability).

The other major objectives are to ensure the holistic development of children between 6 months and 5 years from the project areas (with special emphasis on severely underweight) in 4 crèches. It also aims to promote opportunity to the mothers so that they can go for work by sending the child in crèche to enhance the family income. Empowerment of women/youths of same areas in terms of income, education and rights through group formation, training and community mobilization is a major goal of this project. It aims to Groom the parents of the children of the community with the help of modules and session plan and periodic workshops. It focuses on early child development education through abacus and other joyful learning methods.

This project provides hygienic food for supplementary nutrition for crèche children according to a nutrition chart and guide parents to prevent malnutrition; and in case of continuous malnutrition and under weight of a child in the crèche, the doctor who regularly checks the child, finds out reasons and train them how to prepare low cost nutritional food for the children to combat malnutrition and under weight. A major part of this project is that it provides regular health checkup and medication to crèche children by two child specialists once a month in all four crèches. The crèche educators maintain health register and individual health card for each child. There is a programme of Dental Check up of children once in a year by Dentist and teaching the children about proper dental care and brushing. Eye check up of children is conducted once in a year to ensure that children have no vision problem; by Pediatric Ophthalmologist. There are regular discussions on proper hygiene, nutrition, child health, dental care in guardian's meeting and parent's interaction session.

A highlight of the project is the mothers of crèche children have formed mothers committee which plays an important role in implementing the programme within the community effectively. They mainly suggest the name of the new children, items of hygiene kit; topics to be discussed during mother's orientation programme and awareness programme etc. Some of these topics are women's right, women law, child protection, WASH component, ways of hand washing, and sanitation and ill effects of open defecation. Mothers are encouraged for regular savings, making budget in monthly family expenditure.

Community Coaching Centres

Also the SHG members under the patronage of the CLA members in Tikiapara at Howrah in this year, have opened 2 coaching centres in their community. For this they have arranged for a space from their savings, have conducted several meetings with the various teachers who have agreed to take either free classes or classes with very nominal



fees. They have done regular campaign and promotion of these centres. One of the centres run in a local club and the other runs in the house of a CLA member. The children come to these centres in huge numbers as because their parents are mostly illiterate and cannot guide them in the studies and the fees for this coaching centre is very nominal. The students of the area have hugely benefitted from this initiative and the remedial centres have been hugely successful. Also this has added to the entrepreneurship skill of the CLA members.

BALWADI centres run by community's own youth members

LGWCDC also runs pre – primary educational centre at the four targeted intervention pockets of Santoshpur. Education is a prime component required for child's overall development and this is one of the most important focus areas of all our projects - to minimize violation of child's right related to growth and development. In our Santoshpur Project area in the Mahestala block Municipality, the Sarva Siksha Abhiyan – which is the government program for enrolling children in govt. schools for free education - is in practice. It is targeted to help the parents to send their children to the schools. However most of the parents still do not understand the necessity of education and do not reenroll their



children especially their girl child to school. The major reasons are- ignorance of parents and negligence of educational institution in protecting the Right to education, even though - Right to Free and Compulsory Elementary Education Act is enforced since 2010. The literacy rate in the area is quite low about 46% (data as emerged from FGD from community survey) among the women last year. This issue was needed to be addressed in the community to improve the literacy level and to emphasize the importance of education. Therefore LGWCDC in one of its project initiative have started 8 Balwadi centers (two in each intervened community) for about 200 children. The major highlight of this programme is that, these centres are run by educated adolescent girls of their own communities, demonstrating an example to the other parents of the community and income generation of these girls as well.

Functional Literacy Programme for SHG women

The project also provides non-formal education



to the adult members, specially the illiterate women through various literacy programmes in the community through SHGs. At the time of initiation of this campaign, about 46% women were illiterate; however through the constant endeavour of the SHG members, about 90% have been illuminated in the light of literacy last year. They do not only write their names but are even doing calculations of their daily household expenses and even helping their children in their education. The credit goes to the plan of functional literacy programme of KNH by the group members & willingness of the members facilitated by LGWCDC. The women are now less dependent on others for daily living as they can read the labels on medicine bottles; read the date of manufacturing and expiry date, read road signals and even use

mobile phones and calculators.

Stakeholders Meeting with the Education Committee

This is an initiative to support the work of LGWCDC with ICDS workers and the education committee as we work very closely with the cooperation of the stakeholders. There are regular meetings with ICDS workers and management, school management committee & Ward Development Committee, which has helped a lot to eradicate illiteracy among children & women. The problems and grievances are shared and the meetings are always very successful to develop some innovations for the community.



Parents Grooming Classes



In Lake Gardens the parents of the children who come to the crèches and the remedial coaching classes are mostly illiterate. We want that along with the children, the parents also should gain literacy. Therefore the parents are imparted grooming classes thrice a week at our centres and inside the community not only on basic education, but also major etiquettes of daily living, their diction, their choice of words, how to behave in public, what to do and what not to do as a groomed individual, how to do savings and how to dress up. There is a module for these classes and the parents are very enthusiastic about these sessions.

ONGOING ACTIVITIES

HEALTH AND HYGIENE

LGWCDC believes in the idiom Health is Wealth and so it focuses on improving the educational & health status of vulnerable children, by providing health care opportunities to the children in order to improve their present situation.

Lake Gardens Clinic Services

Monthly clinics are held in Lake Gardens for the creche, remedial coaching and children & mothers of Mother and Child Courses by expert child specialists who take care of the growth and development of the children. If some abnormalities are noticed then the parents are immediately informed and the children are referred to



specialists. The mothers are guided by the doctor for any ailments or nutritional pattern. The parents are now being trained to become self reliant to take their children to the hospitals and not be dependent on the project staff to assist them.

Clinic services to the malnourished children, adolescent girls and pregnant ladies

Our clinic services run in two intervened communities – Santoshpur & Tikipara. The objective of clinic service is to reduce malnutrition among children, adolescent girls & pregnant mothers. It was earlier a German Doctor's Clinic, which was later taken over by Indian doctors. This year our



doctors have facilitated 121 clinics and total 2160 patients were treated in this year.

The SHG mothers and health workers, actively mobilize community mothers for attending the clinic. To our achievement, the CLA members of the SHGs are also coming to these clinics to voluntarily work as health workers. They also keep close contact with the pregnant women of the communities to ensure proper antenatal care and institutional delivery, diet and immunization.

Besides this, with the cooperation of one of our NGO partners, CINI, we procure nutrimix from them, which is a nutrient supplement. This nutrimix powder is prepared as laddu by the SHG members which is distributed to every child and pregnant mothers.

The expert team of doctors counsel the mothers on breast feeding instead of bottle feeding and other techniques of child rearing. Malnourished children

& mothers are identified in periodical community screening programmes and home visit made by health workers. LGWCDC community workers also monitor the children who have attended clinic previously and do regular follow up. In these clinic services- the weight, height & MUAC (Measurement of Upper Arm Circumference) of every child is recorded by health workers assisted by the Nurse who distribute the medicine to the mothers and children.



The last year in a survey conducted by the organization in the targeted area, it revealed that Malnutrition is one of the major problems among majority of women and children, which they want to overcome. Only 40% of the children below 6 years of age in the intervention area of LGWCDC are enrolled under ICDS programme for supplementary nutrition services. This is largely due to poor quality of food intake. People do take good quantity food but as far as the nutrient quality of food is concerned, it is found that it is poor, making the children prone to different infections caused by nutrition deficiency. Basically major parts of the population are habituated to take red meat which increases their body temperature and makes them more vulnerable for food borne diseases. Low intake of vegetables also contributes to high propensity of malnourishment in these areas.

Mid day meal & Supplementary nutrition:

All children coming to the Creche and remedial coaching are provided with a wholesome mid day

meal and supplementary nutrition.

Low Cost Nutritious Food Preparation Sessions:

To combat malnutrition expert dietician demonstrates cooking of supplementary food which is nutritious for the children & mother. The mothers in the clinics and in the community programmes are demonstrated live by the nutritionist as to how to cut, wash, peel, boil and cook vegetable in a



hygienic way and store and preserve food. There are visual demonstrations of the ingredients and correct quantity is also explained so that there is a change of attitude. Over the last few years, this achievement have been made that women are now cooking meat but along with some vegetables as well and they are cooking with lesser spices.

Also in the last year, all the nutrition demonstration workshops in the community have been done with the ingredients supplied by the mothers and in their own utensils and by them themselves, demanding more accountability from them. 61% SHG families are now learning the habit to take vegetables in their daily diet and apply proper cooking methods after participating in these awareness sessions. The low cost food demonstrations in the communities are being whole heartedly accepted by the community and they are gradually changing their food habits.

Immunization

Vaccinations of children have been one of the major motives for our organization throughout last year. Total 82% of children in the community are now under immunization coverage this year. There are however some myths about immunization and the social taboos stop the parents to provide this service to the children. LGWDC with its constant awareness programmes, documentary shows and street plays – have tried to break the jinx of this



superstition. Also counseling of the elder members of the family, especially the mother – in laws has helped a lot to increase this percentage of immunization of children.

Promoting Menstruation Hygiene

There are several adolescent groups in the community formed and steered by LGWDC. These groups are regularly sensitized on various issues of their body and hormonal changes, especially on menstruation hygiene. The major objectives of this



programme are to eradicate the social taboos and myths which are associated with menstruation and to do away with the concept of "bad blood". The programmes are not only held with the adolescent girls but also with their mothers. After receiving information from these sessions, these girls are now using sanitary napkins and are gradually coming out of the myths regarding their menstruation cycle. They are ones who are empowered as peer educators, to spread awareness among their friends. There has been a remarkable increase of 18% of usage of sanitary napkins above clothes.

Health Awareness Programmes

The community is regularly sensitized through health awareness programmes at the grassroots level in all the targeted intervention areas. In Lake Gardens, the awareness programmes are majorly held in the slums of Lake Gardens, Rabindra Sarobar and Dhakuria. The awareness programmes are majorly imparted on water logging, storing water leading to breeding of mosquito larvae, against Dengue and Malaria, sprinkling of beaching powder during monsoon, low cost food preparation demonstration by nutritionist, awareness on dehydration and probable solution during summers, promoting hygienic lifestyle and keeping the children



safe and clean in the shanties, menstruation hygiene practices and awareness on WASH components.

There are regular awareness programmes on health and hygiene related issues in Santoshpur and Howrah as well. They are very essential as the communities are very unhygienic places for a healthy life. The programmes are on similar topics as Lake Gardens. The trainings are mostly imparted by resource persons and medical practitioners, but sometimes even in – house staff also imparts trainings.

Health Camps

Health camps are much coveted programmes in the community drawing a large mass. The health camps are majorly done after need assessment of the area and prioritization of their problems. With the help and network cooperation with Lions' club, 3 school health camps have been organized last year in Tikiapara. Dental & eye check up, basic Blood test, & general treatment including de-worming have been rendered through these camps. With gradual empowerment, CLA members are organizing these camps with the help of Lions club. LGWCDC also supports by providing medicines to the participants of the health camps in Tikiapara.

In Santoshpur, the health camps are majorly health screening camps and over here, before every camp survey is done to assess as to which all areas require screening so that patients can be mapped. The home visits are done prior to every camp and eminent doctors, preferably from near the locality



are called for the health camps. In Outreach project of Santoshpur, last year 6 screenings have been done, where about 112 new patients have been referred to the clinic for treatment. In the health camps, the malnourished children and adolescent girls along with pregnant mothers are treated and referred to the clinics.

There are health camps organized in Lake Gardens to screen prospective Tuberculosis patients who are referred after their sputum collection has been done, tested and declared positive. They are linked with our THALI programme and RNTCP services of the government. These patients are then taken care and regularly put through a follow up of treatment and medication till they are cured. Their nutrition and counseling along with their family members and care givers have been done for 184 patients in the 15 wards where LGWCDC is working in Tollygunge health district.

There are also regular health camps held in Lake Gardens where general check up, blood group testing, blood sugar testing, measuring BMI and other ailments diagnosis is done. The community people, especially the SHG mothers and the youth and children of the community have largely participated in the three health camps held last year in Lake Gardens.

This year too like all previous years, eye testing and free spectacle distribution camp held in all the three areas of Lake Gardens, Santoshpur and Tikiapara in association with a CSR initiative of GKB Optical. Altogether 214 people have got services with 106 spectacles

distributed by them this year.

Change in attitude on ecological preservation and promoting hygiene in the community

To promote good hygiene habits and healthy living practices mothers of creche children were provided with hygiene kits which consisted of sanitary napkins, hand soap, toothpaste, dettol etc distributed among the mothers to help them maintain. Both Santoshpur and Tikiapara are facing the problems of garbage being littered all over in the



community and no civic services intervening. Earlier there were no dust bins in the community and the people threw garbage on the road. During the monsoon, water used to get logged in the slums, for man – made reasons. As a result people suffer from Dengue, malaria, skin diseases, itching and other infectious and deadly diseases. Adolescent girls also used and re – used dirty clothes instead of using sanitary napkins during menstruation days. The SHG groups through the hand holding support of LGWCDC are also advocating constantly with the local councilors and local stakeholders to keep the neighbourhood clean, have tried in the last year to bring about a conscious change in the attitude of the people. The community has curbed down on the problem of garbage dumping and open defecation. With constant intervention, now every day Municipality garbage vans are cleaning the bins and collecting garbage. The youth members in Santoshpur and the CLA in Tikiapara is also campaigning to stop the use of plastic packets because it clogs the drainage system & as a result water logging was a regular sight and water borne diseases used to spread. But now the community picture is changing for the better with the relentless support of LGWCDC and community.

Promoting delivery at hospitals

Community people believe that home delivery is better than institutional delivery because doctor, nurse and ward boys may be of other religion & even male doctor may come and touch them during the process of delivery, which they do not accept. This system usually makes the mother and the newborn child more vulnerable for maternal mortality & infant mortality. Over the last one year, relentless promotion of institutional delivery and regular awareness has brought some changes in the community. Now the clinics of LGWCDC adheres to the rule that those children who have birth certificate will be treated in the clinics, and this certificate is easily, made if the child is born in a hospital, so in turn the mothers prefer along with the fathers to have the delivery in the hospital. This gives them the reward of institutional delivery and the child also gets the first vaccination. LGWCDC arranges awareness for the women, their husbands and their in - laws about the demerits of home delivery & discusses the govt. schemes for mother. Now institutional delivery rate is increasing and even the SHG mothers are promoting to their friends and neighbours.



ONGOING ACTIVITIES

COMMUNITY DEVELOPMENT & WOMEN EMPOWERMENT

While working with the community people LGWDC realized that a Centre based approach would not be sustainable in the long run and work must be done the Community. With this concept in mind the organization started two community development Projects one in Tikiapara Howrah and the other in Santoshpur, Mahestala, Budge Budge.

After a baseline survey 4 slum pockets in each area were selected for targeted intervention. These were 16 Bigha, Podirhati, Kankhuli & Aynalpara in Santoshpur under Maheshtala Municipality Jolapara, Gangaram, Bashiruddin Munshi Lane and Bairagi Lane in Tikiapara under Howrah Municipal.

These communities are largely preoccupied with superstition and social taboos. Women usually hide behind the "purdah" and are not much allowed to interact with the outside world. They are mostly illiterate and are not aware about their rights and entitlements. At the intervention period, communities were socially, politically & economically backward. The communities live in a very unhygienic condition with plastic littered all over and the area is mostly submerged under water during the monsoon. The children also do not get a healthy childhood and their rights are not fulfilled, like- they don't get proper food due to poverty, some of them have no birth certificate due to home delivery and since some of them are living in an illegal settlement therefore they do not get any support from local political leaders. Children have no playgrounds for their recreation as well.

In Santoshpur most of the families are living in small shanties & there is no electricity and as a result of which they are unable to study and avail basic education. They are unable to access primary health care



and are not nourished for a healthy future in turn. In Kankhuli, the immunization centre is far away from the community. So, a major percentage of the children are not getting their immunization as per schedule. This situation was worse before the intervention of the SHA programme. However intervention in larger areas is still very difficult and the project is trying its best to reach to its target population.

In Tikiapara the area is congested & the drainage system is in a miserable condition. People are using the road side as garbage dumping place which is messing up the locality all the more. Crow & stray dogs spread the garbage on the road & foul smell covers the area & encourages disease to spread all the more. Some parts of the community has no concrete roads & drinking water pipes. People are suffering from water borne diseases due to lack of and inaccessibility to safe drinking water. During monsoon, the drain pipes gets intertwined with the drinking water inlets and as a result of this, various water borne diseases are spread in this area due to water contamination.

People are engaged in different occupations here like- Daily Labour, small business, working in unorganised sector like tailoring, embroidery etc to earn their bread and butter. Women are mostly involved in managing household chores and a very few are working as domestic helper in nearby households, stitching garments, making plastic

packets, colouring bangles etc. They are unable to maintain their family properly by this meagre income.

The main thematic area of this project is to develop and empower the community through women Self Help

Groups. Children and women are the main focus of this project through empowerment of women SHGs and Children groups. The approach is not only promoting thrift and credit management, but is encouraging to initiate income generating activities and also empower the women SHG members to secure their rights by SHA. The goal setting activity is the base groundwork for this project. After Goal setting training, women in the SHGs has set their social, political and economic goals of their life. It is an empowering activity. They have also been trained to monitoring their own goals and progress towards the same to achieve the desired level by themselves.

After intervention of SHA, SHG members have set their group goal on these social issues and they have appealed to the local self government for Garbage bin & proper Roads in their locality. Councilor has approved their application & has also given some dustbins for garbage disposal & constructed a concrete road. Every day Municipality car now collects the garbage from the bins.

Bharosa SHG had set their group goal & had appealed to the local councilor for the water channel of their area. Recently they have secured this facility for their neighbourhood. Mother's lack of social awareness is highly responsible for the miserable health status of children.

Drop out and Study center

At the intervention period school going children rate was only 49%. Acute poverty is its main cause.

SHGs members are monitoring the education centres like ICDS, Balwadi & Primary School. Last year 173 children have been admitted in local primary schools & 431 children have been admitted in the ICDS through active initiative of local people's institutions. 30 women SHG members were unable to write their name before the onset of this year. Now they can write their names and even read basic words on the shops and stations after Functional Literacy training. 73 members of 6 SHGs are learning functional parts of different items, like- use of plastic bottles, different symbol on food packets and manufacturing details, expiry date of medicines & cosmetics etc and other basic yet vital information that they need to know for daily living.

SHG members are creating awareness about merits of immunization & institutional delivery at

full go. Now immunization rate is 85% (at the intervention period it was 47%). They help their neighbours & group members to register their name in government hospital. 167 SHA families are using individual dustbins to keep their houses and nearby area clean. It is a result of awareness on cleanliness & campaign on Sachcha Bharat Mission.

The project has exclusively focused on the overall development of the community and their empowerment with priority interventions for the women and children of the target area. To make the efforts of the SHG members sustainable the project has started forming Cluster Level Associations (CLA). At present 3 CLA's have been formed in Tikiapara and its members are assisting in all project activities of the Organisation.

Womens Group & Vocational Training

The adolescent girls & women in Lake Gardens area are given various opportunities to build their skills through vocational training courses in beautician & massage, handicraft and knitting courses whereby they can also learn something which gives them pleasure and at the same time they can earn and make a living on their own by completing these vocational courses. The women are also motivated to form women's groups to run a group business like selling of readymade garments or doing embroidery on sarees and dress materials. They also get an opportunity to learn handicrafts and music. They are also given trainings to deal with social issues like child marriage, early pregnancy, domestic violence, alcoholism & addiction etc. They are also informed about Child Rights and Womens Rights. These trainings have strengthened them to deal with such problems specially domestic violence. Their cooperation in the development of the community focusing on the rights of the girl child and their education has yielded success.



ONGOING ACTIVITIES

CAMPAIGN ACTIVITIES

Campaign on Ecological Rights by Youth Network West Bengal

The team of LGWCDC and TdH has worked together with children for asserting their rights through children's organization and later youths as well to address ecological concerns. These youth groups along with youth groups of several other organizations in West Bengal came together in November 2012 to form the State Youth Network to work on ecological concerns and rights. In their consecutive meetings they elected youths from LGWCDC to lead the network along with youths from organizations working in several districts of West Bengal and planned to spread awareness on ecological concerns at their project level and organize consorted programs on important environment days at state level to make the issues visible with a larger population. Till date several meetings, workshops and observation of special days have been carried out in collaboration with nine other organizations throughout the State of West Bengal. The outcome of such activities have been very positive and changes have been noticed in the communities e.g. reduction in the use of plastic bags, increased adoption of organic farming, more developed consensus on restricted use of water, plantation of trees etc. More and more youths have joined the program to make this world a better place to live.

This project works on a campaign mode in association with several others from West Bengal and also Assam and Jharkhand. In West Bengal, LGWCDC is leading this campaign in partnership with Path Welfare Society, Rural Development Association, Nistha, Indian Youth Federation, Samadhan, Malda Sahojogita Samity, Hill Social Welfare Society, Smokus and friends from neighbouring states. The campaigners are the youth members of the society who are mobilizing the community people and are trying to change the attitude of the people of the society to make the society more eco – friendly. They hold regular youth meetings, core committee meetings, organize



workshops with partners participating from all over West Bengal, conduct stakeholder's meetings, conduct field programmes and even visit places for exposure visits relevant to their focus of work. The energy of the campaigners is the major highlight of this project.

Destination unknown campaign:

LGWCDC is a partner of Destination Unknown Campaign since last three years with Terre des Homes Foundation. This campaign promotes safe migration of children who are on move when their parents and families have to migrate from their homeland to other places and states in search of work. These displaced children become vulnerable to risks of trafficking, child labour, drop - out and many more vices which endangers their childhood. This year LGWCDC worked with children of construction workers who have come to Howrah district from far - flung areas and neighbouring states. Workshop were done with them and their parents and they themselves have voiced their demands for education, safe shelter, right to play and many more to the policy makers and stakeholders of society. At the end of the campaign this year, the child representatives went up to the Child protection Officers and have placed an application on behalf of other children on – move requesting for a better condition of upbringing.

ONGOING ACTIVITIES

SOCIAL AND POLITICAL AWARENESS

Children & Youth Groups

Presently different groups of youth and children have been formed who are involved in community development process. They are actively involved in creating awareness in the community on various social issues; they also help in identifying drop out students and motivate them to enroll in school thereby ensuring that no children are out of school as per right to education act. These groups frequently visit different schools for conducting survey, motivating the teachers, students etc. LGWCDC can state that hundred percent of the children from the community has been mainstreamed in the school and they are continuing their education. Since 2010, LGWCDC started working with boys also. The adolescent and small boys in the age group of 5-15 years were enrolled in remedial classes after conducting home visit and following the criteria for admission to the program ensuring hundred percent mainstreaming of the children in community



Awareness on prevention of early marriage and early pregnancy

This is a perennial problem in the project areas of LGWCDC and the endeavour is continuing since many years. The major reasons are acute poverty, lack of awareness, lack of security in the community and social myth of getting the daughter married off early to be hassle free and to send the girl before the amount of dowry increases. Girl child education rate is very low & this leads to early pregnancy producing malnourished child. LGWCDC through its project intervention campaigns, among the youth;

addresses on the demerits of early marriage and various laws against early marriage. Gradually this precedence is reducing due to various awareness drives & formation of youth group. The youth members nowadays are protesting against early marriage and even if they cannot stop, they vehemently oppose early pregnancy.

Raising voice against Domestic Violence

The communities of Santoshpur and Tikiapara are largely patriarchal in nature with male dominance and low level of education and enlightenment. The custom of dominating wife is mainly prevalent in these communities and the male members are very dominant who torture the women, both physically & mentally. Wife – beating, domestic abuse, restrictions in moving freely, restrictions on meeting or interacting with everyone, restrictions on women of living life at one – own wills are common sights of the community. SHG women are collectively protesting against this and LGWCDC addresses on law against

domestic violence & how women can prevent all these atrocities of male members of their family. Alcoholic husbands and abusive mother in law or family members are the major mediums of physical & mental torture. Polygamy is also widely prevalent in some of the communities which have been combated to a great extent by the SHG members. They have empowered themselves and have taken various pledges to strive towards these issues. Women are the most neglected and violated members in family & society. SHG women this year have received training from awareness camps & now they are protesting collectively as well as individually at home they are protesting against

domestic violence & eve teasing. LGWCDC is treading on a path that will usher new light in the life of these vulnerable women.

Rise in decision making skills

LGWCDC always work towards raising the voice of women. In the last one year, the women have been imparted various trainings to develop their identity, grow self confidence, build up and groom their personality and speak out their mind. Today women, even if they are behind the "purdah" in some communities, yet they are protesting against abuse and torture, they are well – groomed, they take their girl child to schools and they have decision making capacities. The very concept that the women are participating in large numbers in SHG meetings, travelling outside Kolkata to participate in training programmes last year, have shown that some changes are being evolved.

Discussion of current and burning social issues

The women and youth and adolescent boys and girls are regularly organized for social mobilization programmes which are held in all the operational communities. Organization sometimes invites external resource persons, partner organizations and even theatre teams for organizing street plays at different strategically important communities. These theatre groups perform on trafficking, domestic violence, child rights, ecological rights, eradication of myths and superstition, raising of voice against atrocities & education for girl child. These awareness programmes also address the law and also the various government entitlements. These awareness programmes are facilitated by the volunteers from the community and SHG members who flag the initiatives. Media, wall writing, signature campaigns, poster display, rally, placards and stakeholder meetings are the various medium bearing the torch of awareness programmes. Beside this, LGWCDC arranges for awareness campaign for the SHG women & adolescent girls as well to empower them so that they can disseminate the learnings further down the community. External resource persons have whole heartedly facilitated and enriched our programs.

Political Awareness Training

Women are mostly inside the house due to social customs and restrictions. They were found to be

unaware about the social security schemes. LGWCDC therefore organised awareness camp on social security schemes. Many SHG families have received govt. schemes after goal setting. Bharosa group of Tikiapara have secured their Aadhar and Voter i.d. cards and they are helping their neighbours also to secure the same. Awareness sessions on various entitlements are conducted to inform community people about their basic entitlement as a citizen of India. These meetings were also utilized to inform them about different social security schemes of Government of India for the poor e.g- Old age pension, Widow pension, Janani Suraksha Yojana, Digital Ration card etc. Main discussion points are usually on different govt. schemes & process to avail those. They also discuss about how people can get access to those facilities. Beside this, our staff has also facilitated community members to procure their Aadhar card, Voter card and birth certificate of their children. Legal professionals and Govt. officials have facilitated these sessions



ONGOING ACTIVITIES

EVENTS, WORKSHOPS, TRAININGS

Jubilee Celebration



This was the most special programme of the year for the organization. This was the celebration of 25 years of the organization which was celebrated on 19th January at Madhusudhan Mancha in the evening. The programme was celebrated with lots of love, pomp and show with all the friends and supporters of LGWCDC. The guests applauded the inauguration of the occasion with the lighting of lamp and welcome address by the anchors of the programme. There were guests called for the programme on the stage who made the occasion more special: Cecilia Sircar – Founder of LGWCDC, Robin Sircar – Joint Secretary of LGWCDC, Saugata Roy – MLA, Dr. Aniruddha Chowdury – Founder of Liver Foundation, Archana Sengupta – councilor of ward number 94, Aanton Mookherjee - Wedoria Technologies and Aritro Sarkar - Wedoria Technologies. All the guests gave their valuable speech on the organization and her journey. It was followed by a brief presentation on the journey of the organization by the President – Ms. Suranjana Basu Das. This was followed by a musical cultural celebration of song and dance by the children and SHG women members of LGWCDC. Then there was a wonderful mime enactment from Jogesh Mime Academy, which left the audience enthralled. The programme concluded with a beautiful performance by the famous talented singer Nipobithi Ghosh. In true sense, the programme marked the glory and journey of Lake Gardens Women and Children Development Centre since the last 25 years.

Observation of Water Day

This year LGWCDC celebrated Water Day on 22nd

March. The youth members decided to observe Water Day highlighting the importance and scarcity of clean drinking water and the programme was conducted under the banner of LGWCDC. For this the youth members and Green Club members had conducted a campaign throughout the previous week in the nearby slums of Gobindopur, Rangkal, Madartala, Mollahati and in their schools, that "Jal – Chatra" will be kept in front of the Phalguni Sangha park. The youth volunteers kept glucose water which they distributed to the people who came to them in paper glasses. The water was kept in a big earthen pitcher which was drawn out by a long ladle. There was a constant awareness programme going on about what is the importance of conserving water, how we unconsciously waste water, that there are some parts in our country where women and even children travel miles after miles to gather drinking water, how we can cautiously use water and importance of water in our lives. This was advocated by TdH team and youth campaigners and Green Club members. The campaign drew a huge footfall as it was a hot and scorching day and people came in large numbers to quench thirst and in turn were advocated.



International Women's Day:

LGWCDC believes, that women are glorified on all the days throughout the year but on some days, they are more special. So this year too LGWCDC celebrated Women's day with lots of enthusiasm and energy. In Lake Gardens, women of the community and the staff took out a rally near Bangur Park cheering out various slogans of glory to woman. A charity group of college students called "Saksham"



joined hands with us and organized some events and games where the women participated and enjoyed their day filled with fun and frolic. Similar celebrations took place in Santoshpur where local women achievers and leaders were invited and they had an enriching sharing. In Tikiapara the CLA single – handedly organized this special day and took out a rally on women’s rights. A community meeting was organized where the SHG group members voiced out their stories of empowerment to others, which inspired many more.

Janmastami Celebration

LGWCDC promotes virtues of all religion in India, Janmastami is an annual Hindu festival that celebrates the birth of Lord Krishna, the eighth avatar of Vishnu. On the 18th August 2017, LGWCDC celebrated Janmashtami. The story of Krishnas birth and the attempt by his maternal Uncle Kangsha to kill him after birth was enacted by the Children through a dance performance. The SHG Members sang a song. The children also performed a dance depicting a young krishna with his lady love Radha and her freinds. A video on the birth of Krishna was also shown to the children. Lord Krishnas favourite food Laddu was distributed to all present.



Iftar Party

LGWCDC maintaining its secular nature celebrated Iftar party to commemorate the month of Ramadan. Our organization’s friend Mr. Akramul Haque was invited to impart teachings on Islam and importance and significance of the month of Ramadan. He conducted an excellent programme and the staff whole heartedly participated in this programme. Later all the participants were distributed Iftar plates with fruits, lemonade and evening snacks.



Childrens Day

This year children's day was celebrated with lots of love and care for the children with whom LGWCDC is working. In Lake Gardens, on 14th November, the creche children celebrated the day wearing colourful dresses and spent the day with music, games and dance. In the evening, the remedial children spent



the day in their own style by playing musical chair, danced on rhythmic numbers and the SHG women performed specially for the children. The children were given cakes and sweets. The children of Santoshpur and Tikiapara in the children's group sat in their respective areas and shared stories, had a lot of fun, sang songs and were given goodies which made them happy. The children went home spending their day in their own way and with smiling faces.

Christmas Party:



This year too our founder member Ms. Cecilia Sircar celebrated the special occasion of Christmas with all our creche children, children of our remedial classes, all the staff of LGWDC, friends and family members. Dance, music, gifts and wishes enriched the festival and the joy was reflected in everybody's eyes. The children performed various musical acts and the guests appreciated their efforts.

State Level Capacity Building Workshop For Youth:

This year the campaign on ecological rights, supported by TdH Germany, organized two residential capacity building workshops, one in June in Dishari and the other was in October in Nitika Don Bosco with project partners all over West Bengal: LGWDC; SPAN; Nistha; PATH Welfare Society; MSS; RDA; NERSWN; IYF; NSWS; SARITA; SAMADHAN; TORANG Trust and ANT. The youth from far off places usually come one day prior to the workshop. The workshops were for two days each where the resource persons imparted various sessions on what is ecology, what does ecological imbalance mean, what are the hazards of ecological imbalance, SDG Goals, why are they required, how can youth campaigners contribute to this campaign and other such areas were discussed. The youths usually conduct this workshop facilitated by them and through participatory and group work method.



The youth themselves have formed a Core Committee among themselves where the members are elected representatives chosen by them. These organizations make a plan at every interval to work on a similar line for the campaign and share their feedback, challenges and learnings in the next workshops.

School Workshops By Green Club:

This year the youth members of Lake Gardens have conducted various programmes in the schools. They have formed a Green Club which they have organized to spread and protect greenery in the neighbourhood. They majorly carry on small activities in their own communities and in their schools. They have approached the principal and headmaster of schools of Lake Gardens and Jodhpur Park like Jodhpur Park Boys School, Jodhpur Park Girls School, Kalidhan Institution, A.K. Ghosh Memorial, Paribarikkee and many others regarding



: usage of dustbins in schools, plantation drive by Green Club Members, menstruation hygiene, awareness on TB and many such other issues. In Santoshpur, the issues that were highlighted in schools by the youth member were "Safe Spaces" for children. This was to map the areas which were safe and which were unsafe for any child or youth in the community. Survey has been conducted in schools of Santoshpur like Shyamaprasad Balika Vidyalaya, Kankhuli Girls High School, Rampur Oboitnik Vidyalaya and some other to assess how safe are these schools or the children and how comfortable do they feel in schools.

Stakeholders Meeting

Stakeholders meetings are very important events for LGWDC and this year we have organized several stakeholders meetings in Lake Gardens, Santoshpur and Tikiapara. The major partners who

are called are the partner organizations, local councilor, club members, front line government workers, school teachers, ICDS, Anganwadi workers, Education and Health committee, police officers, youth leaders, school teachers, SHG women representatives and friends of the organization. The various relevant ongoing issues have been discussed and the areas where we face difficulties and challenges, we ask them to extend their hands for help. The meetings are usually very fruitful and this strengthens the networking system.

Capacity Building Of Creche Educators:



This training is essential for all creche educators for them to be updated as well as learn something new from the encyclopedia of knowledge that is relevant to them. This was conducted on 5th December 2017 and the major objective was to make the crèche educators more accustomed with objectives for community work and develop the community, to make them understand about good rapport building with community people and stakeholders, and analyze the problem of the community and the resources available in community and to implement the work effectively. The methodology that was used were Participatory Discussion, analysis of problem tree, Specific Case Discussion and Lecture Method through group work and presentation. The training was very essential and the creche educators gave a feedback that a learning is always enriching to them.

Refresher Course Workshop Of Creche Educators

On 14th March 2018, there was a 1 day Refresher Training of crèche educators regarding child development, developmental milestone, cognitive, language, physical development of the child along with nutritional requirement. The objective was to refresh the knowledge of crèche educators regarding



developmental milestone of the child along with social, physical, cognitive, language development. Besides this, discussion was held on child nutrition and the preparation of low cost iron rich food at crèches as well s home. It was done through Participatory Discussion, Specific Case Discussion and Lecture Method through group work and presentation

E – Waste Workshop

This is a very relevant campaign that is been conducted in some selected schools in Lake Gardens and in Santoshpur and also among the SHG women. The school children have been imparted training sessions as to what does e – waste mean and how can they be youth campaigners to stop e – waste and address its proper disposal. Lake Gardens have 5 active SHGs which comprise of women of the nearby slums. They are regularly imparted trainings on various social benefits and they are also trained to be community mobiliser so that they develop a sense of accountability towards the society. Last year was the first year of their training as they never knew that their children are living in a world of so much waste from electronics items which can cause harm to so many people including their own children. They themselves suggested a deadline by which, they would collect e – waste from their houses and neighbourhood and deposit in the centre. The SHG



women were given a collection box, where they collected a huge amount of waste like old mobile chargers, broken radio, old torch, damaged wire, broken mobile handset, broken headphones, broken walkman and others which the women themselves took responsibility and deposited in the box and handed over to the youth. The youth members have decided to deposit them to "Disha" after collecting some more.

Focussed Group Discussions In The Community

Several focused group discussions (FGD) were held in the communities of Lake Gardens. The main aim of the programme was to see the status of the children, food habit of the children, eating pattern of the community people along with a proper nutrition, education and environment, daily living habits. The scenario of the community is that most of the mothers are working as domestic worker and their economic condition is not sound and they even have very minimum knowledge about education and nutrition. The mothers don't get their family support as their husband do not cooperate with them for the betterment of their family. In these FGDs they shared many problems of their children. While analysing a problem tree it they found that they had common problems but were unaware about it as they had never discussed these issues among themselves. The problem were suffering from cold and cough, indigestion, infliction of worms, allergy, vomiting, nausea and craving for outside crunchy food etc. The most common among these were Children suffering from cough and cold, worm and diarrhoea. Some other issues of concern were leaving the child in the community alone when they are at work. The parents of elder children are worried about protection of the children in the community and their security in future. Some Mothers stated that adolescent girls are very arrogant and most of the time they elope and get married. Beside this,



they are worried about the education and remedial support to the children. These FGDs were very useful for formation of future plan of action in the community.

Workshop On Safe Gender Spaces



This year, the youth of Santoshpur were put through an exercise of safety in their community and how secured do they feel in their community. The youth were regularly oriented about this in their meeting on the concept of what is "safety", what does "risk" mean, which are the areas which are risk prone and how can they map the areas which are risky to them. Approximately 80 youth members from all pockets of Santoshpur, had participated in this exercise which started in February and it continued upto April. The youth members made chart papers where they drew their community and marked with red colour the areas which they felt are unsafe and high risk for them with respect to violence, trafficking, abuse,. They marked those areas with yellow which they felt are risk prone but not so much and can be avoided if they are careful. They marked the safe spaces with green colour. This exercise was very useful for the youths, specially the girls as they have realised which are the potential risk prone and which are unsafe spaces for them and how they can alert. Later in the stakeholder's meeting, they have submitted these charts to the local councilor's for addressal and redressal of the same.

Exposure Visit Of The Youth Members

The youth members of the ecological campaign this year visited Joygopalpur Gram Bikash Kendra at Sundarban in South 24 Parganas. The visit was conducted on 23rd February. The Youths got an exposure on different issues of Environment like: campaign against open Defecation, conservation & use of rainwater (harvesting); preparing and using

arsenic removal filter; making of sapling in nursery ,animal husbandry for cultivation ,using organic fertilizers, natural ventilated poly house; soil health care etc. 22 youth members from PWS, IYF, Nistha and LGWCDC along with adult escorts participated in the visit. After the visit the youths sat together and discussed among themselves as to how they can use these techniques in their own areas.

Health Education And Hygiene Training



LGWCDC have imparted health awareness training programmes at the grassroot level in all the targeted intervention areas in the last year. In Lake Gardens, Santoshpur and Tikipara the awareness programmes majorly focussed on water logging, stagnating water leading to breeding of mosquito larvae, against Dengue and Malaria, sprinkling of bleaching powder during monsoon, low cost food preparation demonstration by nutritionist, awareness on dehydration and probable solution during summers, promoting hygienic lifestyle and keeping the children safe and clean in the shanties, menstruation hygiene practices and awareness on WASH components. There were regular workshops in all these three pockets to teach the mothers why and how to cook low cost nutritious food. The mothers in the clinics and in the community programmes were demonstrated live by the nutritionist as to how to cut, wash, peel, boil and cook vegetable and store and preserve food in a hygienic way. There were visual demonstrations of the ingredients and correct quantity was also explained. These trainings have been very beneficial and already a change of attitude has been observed. Now green vegetables have become an important component of the daily meal.

CLA Strengthening Training

Cluster Level Associations (CLA) are the apex body of all the SHGs in the community. They are



monitoring and implementing bodies of the SHGs. Regular meetings, workshops, brainstorming are done with them to organize them so that they in turn can steer the SHGs. This year the staff of the Tikiapara and Santoshpur projects have travelled to Mudhol for workshop on CLA formation and strengthening. They in turn have sat with the CLA members and disseminated the training knowledge. This year the CLAs conducting their own meetings, made their own budgets and even took decisions to plan their action for community development. The CLA members, also for the first time travelled outside their homes, beyond their "purdah" to Dholpur, Rajasthan to mingle and interact with other CLA members from other areas of the country and have learnt about the Roles and Responsibilities of CLA Members. They are now more self reliant and confident.

Income Generation Training



This year the Staff of Tikiapara and Santoshpur had travelled to Mudhol and Raipur to take training on business module so that the economic goals of the SHG members are achieved. The SHG & CLA members are regularly trained on micro enterprise so that they are economically empowered. It helps to increase the income of group members as well as increase the livelihood status of the members.

It empowers the women towards economical sufficiency of the women which helps to increase in their decision making power. In this year, the women have participated in various workshops like spice making training, handicrafts and tailoring workshops, whereby they have learnt the art and the technique of business which in turn will help them to earn their living and also do their savings. Trained Staff along with external Resource persons have facilitated the program. They have described why women should start business, how they start business, what type of training they need and other issues like promotion and marketing.

Sensitization Meeting With Parents

LGWDC believes that parents are the guiding stars for the children and hence they need to be



oriented through various programmes so as to bring up good and healthy children. Keeping this in mind they are regularly sensitized on good parenting skills. Discussions are held on Child development, Child protection & child recreation, need of Birth certificate, violence against children & formal school enrolment. Special focus is given on cleanliness & hygiene maintenance of children and family planning. Issue like not to have physical intimacy with each other in front of children, not to use vulgar languages or abusive language at each other and not to hit each other in front of children through psychological interpretations were majorly done this year.

Orientaion Of Adoloscent Girls

There are regular interface meetings with adolescent girls on issues like what is group, what is team game, personal hygiene, nutrition, physical & mental changes in this period, media influence, elopement and early marriage and early pregnancy. The sessions focus on "safety circle" and safe



spaces, early marriage, eloping, early pregnancy and lying to parents. They perform role plays in their community. Beside this girls are trained by the expert resource persons about physical, mental change of this period & cleanliness on those special days of the month.

Gender Training

KNH in the last year have imparted a very relevant training to the staff which they have in turn imparted to the community – training on Gender. Through this training the SHG members were oriented on the concept of Gender, who has created this concept, what are the connotations of the various idioms and proverbs on Gender biasness that are used colloquially, how we differentiate between our children and the children in the community and how we also differentiate unknowingly among our children. These workshops speaks on Gender socialization and gender specialization. The workshops started last year in the community and is an ongoing community activity. The response is overwhelming as the women are gradually realizing as to how gender and its implications have deep roots in the society and how they are victims of gender biasness.



Rugby Camp



Play being one of the major rights of children, LGWDC always promotes it. In the month of December, 15 children, mostly girls attended a Rugby Camp held at the Maidan, Kolkata organised by Jungle Crows. The children were taught the rules of the game. They enjoyed the camp very much and are enthusiastic to take it up as a regular game in their neighbourhood. The camp became so fruitful that now on every Friday, Jungle Crows come to LGWDC and teach Rugby to the slum children in and around Lake Gardens. The children are learning a wonderful, yet unknown game which involves both brain and spirit.

Women Empowerment Conclave

A women empowerment conclave The World at her Feet- Sports Empower Women was organised by German Football Academy on July 21st 2017. The Sheroes spoke about their lives, inspirations and how sports has played an important role. Among the seven sheroes was Our President Ms.Suranjana Basu Das. She spoke about her achievement as a women and how the women of LGWDC are carving a niche for themselves here.



CSR ACTIVITIES

CSR Program by LOREAL

Like previous years this year also Loreal observed Citizens Day. They organised an exposure visit for our children beneficiaries to Birla Planetarium & Victorial Memorial. The children were also treated to a delicious platter by them. These children belong to the disadvantaged section and therefore they were thrilled to get such an exposure.



Program by GKB:



Like previous years this Year also GKB Opticals organised eye camp in all three project units for the community people with special focus on women and children. 214 patients treated and 106 received spectacles without any cost.

TRAINING SUPPORT

Having an experience of 25 years with a number of trained staff on Board and a pool of Resource Persons LGWDC, this year ventured into a new arena to provide training to members of Other Organisations. One such Organisation –Howrah South Point – approached us to give training to their newly appointed Community workers on different social and health related issues with special focus on Family Planning. 18 such training sessions were held within a span of 5 months. 7 community workers along with Project Staff received training from medical professionals and Senior Staff Members of LGWDC.





MAJOR ACHIEVEMENTS

Since the inception, there were several hurdles which the projects have overcome although there is a long way to go. Some highlights of the major changes that have been achieved this year, are:

- Girl child education level was low and the drop-out rate among the girls was high. The major hindrances which promoted drop out were poverty, ignorance, need of elder children to take care of younger siblings and no awareness of continuation of studies. The ICDS helped to enroll the children in formal school. CLA has started coaching centres in Tikiapara. As a 82% children in Santoshpur, 92% children in Tikiapara and 100% children in Lake Gardens target area are going to formal schools.

- This year was a glorious achievement for the organization, where 173 children were mainstreamed from the Balwadi centres to primary schools and 29 children from crèche were successfully placed in the primary schools in and around Lake Gardens.

- In Lake Gardens, the mothers have shown a remarkable progress in savings in the last year of 43 mothers have opened personal savings account with their own and are trying to deposit money as much as possible from them.

- Early Marriage is a persisting problem in the community however a reduction in rate was seen. Youth group members addressed various issues involving the demerits of early marriage and disseminating information on law against early marriage, early pregnancy and the allied consequences of the same. In 2016 -17, 45 cases were recorded in target areas while last year it was only 7.

- Illiteracy among the SHG members- 45% women SHG members were illiterate at the interception of the project. They were using thumb impression instead of signature. Being motivated by the project strategy through Functional Literacy, 70% of them are now able to write their names and are gaining knowledge of daily living without dependency on others. Beside this, SHG members are practicing the use of calculator, mobile phones, use of various consumers and fast selling items and other requirements which is eradicating the darkness of illiteracy and ignorance.

- SHGs members appealed to the councilor for dust bins and Municipality has also given some dustbins which are now being cleaned regularly. Project also provided 164 dustbins for the SHG families in the community

- Use of sanitary napkins among adolescent girls saw an increase from 11% last year to 65% this year.

- As a result of regular awareness drives on the benefits of Institutional delivery last year 81% women underwent institutional delivery.

- Through different trainings on leadership, basic rights etc. women are now able to take decision and have come out of the threshold of their houses. They are also getting recognition in their families and in the neighbourhood.

- Women are now more aware about law against domestic violence and how to prevent this abuse.

- Immunization rate has increased to 85% from 47% last year.

- External resource mobilization- As per CLA plan, project had arranged every patient has given token money which are been used in the CLA fund.

- Citizenship identity – Many families Tikiapara and Santoshpur target area did not have citizenship identity. However now they have collected AADHAR card, Ration Card & Voter card, PAN card & Birth certificates from respective departments. 723 women have received AADHAR citizenship card & 221 children have got their Birth certificates under social security schemes

- 18 SHG women in Santoshpur have received Gas connection under Ujjwala scheme;

- SHG members had appealed to the local councilor against their bad roads & scarcity of safe drinking water. Councilors on this request have constructed some roads in the community and have given work order for pipe line extension.

- 75 SHG members are doing individual business after getting loan from SHG from 5 SHGs are doing group business thereby earning money for their family.

AND THE AWARD GOES TO
HEROES OF THE YEAR

A STRUGGLING FACE NOW SMILING

Puja is a small girl of 8.No. colony near to Dakhinapan Shopping Complex and Lake Police Station. Jharna, mother of Puja is very young, of about 20 years old. During community awareness programme she shared her present condition with the community worker. She shared that presently she is staying with her parents and her husband has left her with her small child. She did not complete her studies and now she has to earn money for maintaining Puja and herself. She was in very wretched condition as her father is also an alcoholic and everyday he creates trouble in the family. Jharna mainly looks after household work along with her mother but due to financial problem she has to earn money. Jharna visits head office of the organization and has enrolled her child's name. After proper pre admission home visit, Puja was selected for the crèche and has now started coming to Butterfly crèche. Jharna has started earning by working as domestic worker in the locality. She is working in five houses and earns Rs 6000/- approximately. Puja is regular in crèche and is developing slowly. She is very happy in crèche and is getting a healthy



environment and is doing her crèche activity with lots of interest and happiness. Jharna through the intervention of our community worker have regained her self confidence and is now very much dynamic and vocal. She is also now taking training in beautician course, so that in future she can make a living out of it. She has also started savings. She is now an active member of the mother's committee. In parents grooming classes, she participates and shares her experience of domestic violence and how she has overcome it, so that it can be an example for others.

A HEALTHY GIRL NOW

She is Roshni Khatun. The Baby was a SAM (Severe Acute Malnutrition) child. She had feeding problem. She came to our Santoshpur clinic when she was 8 months and 9 days. Her neighbours and family members told that she will not survive, when she came to the clinic she weighed only 5.820kg with height was 62cm, MUAC-114. She was under -3SD category, with sunken eyes. She was advised by the doctor and the nutritionist to feed only homemade food in proper quantity and gave her the required medicines. Both her parents were illiterate and did not have any knowledge of child care and malnutrition. They were very poor and the baby was born at home. The dietician also started counseling Roshni Khatun's mother to increase the weight of her baby through only homemade food consumption and showed her how to make low cost quality food in a proper way and also told her about the frequency



of feeding, quantity of food as well as she discussed about importance of family food & cleanliness while eating. Through the intervention of health education of the health workers and regular follow up now she has attained the weight of 7.200 kg in two months and is out of any danger. Her parents are now also convinced to have a small family and take care of both their children.

MY RIGHTS, MY VOICE.

Rajia Sultana, Rehana Khatun, Aloka Das, Nikhat Parveen & Jaida Khatun are the members of Ummed SHG of Tikiapara. They did not have citizenship identity before the intervention of LGWCDC till last year. They could not apply for any government benefits and schemes, like- Ujwala LP Gas scheme and other loans due to non availability of these documents. They discussed their problems in their group meeting. After awareness on various entitlements on government schemes, they set their goal as per SHA. They went to local councillor office with project staff to know the detail. After that they applied for AADHAR card at Tikiapara centre. Their husband did not encourage them as they thought



that their wives might become more powerful. But with lots of struggle, mediation and constant follow up, all the members in the group have now received their citizenship cards.

BABY BORN WITH PROPER CARE

Raufan Bibi of Santoshpur has a 5 year boy. This boy was born at home with the help of local midwife. Raufan suffered many problems at the time of her first delivery. Her son does not have a birth certificate. She did not receive any Tetanus injection or iron tablets during her first pregnancy period. She was very weak after delivery due to heavy blood loss. Raufan Bibi came to know that institutional delivery is the best and the safest from the information gathered by attending awareness programs & SHG meetings. She received two tetanus Toxoid injection & 100 Iron – folic tablets as per advice of project clinic and had also registered her name in the local Hospital. On 18th October' 2017 night, Mrs Raufan Bibi, of 16 Bigha felt labour pain for her second child. She is the member of Padma SHG of 16 Bigha. She immediately informed her



mother and husband. Her neighbour called a Traditional Birth attendant (TBA) for home delivery, but Raufan and her family decided to go to a government hospital for delivery. She delivered a healthy male baby on that day at Bangur Hospital, Tollygunge. After birth, the baby got BCG & polio vaccine & his name was registered for birth certificate. She gives only breast feed to her baby.

SMALL HELP CAN BRING A BIG CHANGE

Mira Bibi, wife of Salim Sk is a member of Ichcha SHG at 16 Bigha of Santoshpur. Salim is a construction labour. They have 3 daughters. Salim was the only earning member and his income was unstable. As a result quarrelling was the everyday component of their family life due to poor economic condition. Mira had been crying in every weekly SHG meeting for this. She was motivated by the project staff and took Rs. 1000/- loan from SHG. She opened a kite shop in her small room. It is a profitable business and she repaid the entire loan amount including interest. Kite business is seasonal. During monsoon she had no work and so there was no earning. She discussed with the project staff & her

group member. After goal setting she requested for another loan of Rs. 2000/-. Loan was sanctioned. With her own capital of Rs. 5000/- , she rented a small room near the road side and opened a Grocery cum fast food shop. In the morning & evening Mira sales puri, potato chop, puffed rice etc, and rest of the day she sales grocery items. Every day her sale amount is Rs. 1700/- and her net profit per day is near about Rs. 400/-. Her elder daughter is studying in class-IV. She has also afforded to keep a private tutor for her daughter. Her future plan is the higher education of her children. Mira has already repaid Rs. 700/- of her loan amount. She encourages others to join SHG for economical and social upliftment. Now their family is a happy family.

ACKNOWLEDGEMENT

Our heartfelt thanks and gratitude to all our donors, friends and well wishers for supporting us and being by our side in our initiatives to achieve our Goals.

A special thank you to:

- Freunde und Förderer Lake Gardens e.V., Germany
- Terre des Hommes Germany India Program
- IndienHilfe e.V. Herrsching, Germany
- Sign of Hope e.V, Germany
- Kindernothilfe e.V Duisberg, Germany
- German Doctors Association
- Paul Ritzau Foundation
- Consulate of the Federal Republic of Germany, Kolkata
- Path Welfare Society
- Howrah South Point
- Rotary Club(s) in Kolkata
- L'oreal
- Friends Club Lake Gardens,
- SRL Pathology Laboratory, P.A.Shah Road, Lake Gardens, Kolkata

DONATE: JOIN OUR CAUSE

We request all our friends and well wishers to donate freely - this will not only change the lives but your donation will be.

Beneficiary: **Lake Gardens Women & Children Development Centre**

State Bank of India, Lake Gardens Branch
(IFSC Code SBIN0001802).

Bank A/C No. for **Local Donations:** 30038437433

Bank A/C No. for **Foreign Donations:** 10548712206

Exempted by Director of Income Tax, Kolkata, vide Notification No. $\frac{\text{DIT(E)/100}}{8\text{E}/239/00-01}$
of 14.10.2014 from paying income tax by the Donors u/s 80G of IT Act 1961

2017-18
AUDIT REPORT



Ref.

Date

Independent Auditor's Report

To the Executive Committee of **Lake Gardens Women & Children Development Centre.**

We have audited the attached Balance Sheet of **Lake Gardens Women & Children Development Centre** (herein after called **LGWCDC**) having its registered office at 164/78 Lake Gardens, Block-A, Flat-14, Kolkata-700 045 (registered under West Bengal Societies Registration Act, 1961 vide registration no. S/73111 of 1992-1993 and operating as a Non-Government Development Organization) as at 31st March 2018, also the Income & Expenditure Account and Receipts & Payments Account for the year ended on that date, annexed thereto and report as follows:

1. These financial statements are the responsibility of Lake Gardens Women & Children Development Centre's Executive committee. **Our responsibility is to express an opinion on the same based on our audit;**
2. We have conducted our audit in accordance with auditing standards issued by ICAI. Those Standards require that we comply with ethical requirements and plan and perform the audit to obtain reasonable assurance about whether the financial statements are free from material misstatement.

An audit involves performing procedures to obtain audit evidence about the amounts and the disclosures in the financial statements. The procedures selected depend on the auditor's judgment, including the assessment of the risks of material misstatement of the financial statements, whether due to fraud or error. In making those risk assessments, we considered internal financial control relevant to the LGWCDC's preparation of the financial statements that give a true and fair view in order to design audit procedures that are appropriate in the circumstances, but not for the purpose of expressing an opinion on whether LGWCDC has in place an adequate internal financial control system over the financial reporting and the operating effectiveness of such control. An audit also includes evaluating the appropriateness of the accounting policies used and the reasonableness of the accounting estimates made by the LGWCDC's Executive Committee, as well as evaluating the overall presentation of the financial statements.

We believe that the audit evidence that we have obtained is sufficient and appropriate to provide the basis for an audit opinion.

3. In our opinion and to the best of our information and according to the explanation(s) given to us, the aforesaid financial statements give the information required by law in the manner so required and give **a true and fair view** in conformity with the accounting principles generally accepted in India :



- a) In case of the **Balance Sheet**, of the state of affairs of the society as at 31st March, 2018;
- b) In case the **Income and Expenditure Account**, of the deficit of the society for the year ended on 31st March, 2018; and
- c) In case the **Receipts & Payments Account**, of the receipts and payments for the years ended on 31st March, 2018.

For, A DUTTA AND ASSOCIATES
Chartered Accountants

FRN: 328193E



A handwritten signature in blue ink, appearing to read 'Sandip Gupta', written over the circular stamp.

Sandip Gupta
Partner

ICAI M. No. 304737

Date: 22/08/2018
Place: Kolkata

LAKE GARDENS WOMEN & CHILDREN DEVELOPMENT CENTRE			
164/78 Lake Gardens, Block-A, Flat-14, Kolkata - 700045			
BALANCE SHEET AS AT 31-03-2018		As at 31-03-2018 ₹	As at 31-03-2017 ₹
CORPUS AND LIABILITIES		Note	
CORPUS FUNDS			
Corpus Fund	3	57,43,195.76	81,39,002.61
Reserves & Surplus	4	-	-
CURRENT LIABILITIES			
Other Current Liabilities	5	29,94,889.91	13,85,820.20
TOTAL		87,38,085.67	95,24,822.81
ASSETS			
NON-CURRENT ASSETS			
Fixed Assets	6	7,58,118.79	8,68,453.00
Non Current Investments	7	-	-
CURRENT ASSETS			
Cash and Cash Equivalents	8	36,75,957.18	34,52,637.06
Current Investments	9	33,00,000.00	35,00,000.00
Other Current Assets	10	10,04,009.70	17,03,732.75
TOTAL		87,38,085.67	95,24,822.81

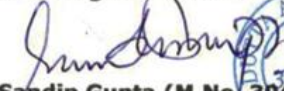
Significant Accounting Policies and Notes

1 & 2

The accompanying notes are forming an integral part of these Financial Statements.


As per our report of even date annexed herewith

For A DUTTA AND ASSOCIATES
Chartered Accountants
Firm Registration No. 328193E


Sandip Gupta (M.No. 304737)
(Partner)

Date : 22/08/2018
Place: Kolkata

Lake Gardens Women & Children Development Centre


For and on behalf of the Trustees
President

Lake Gardens Women & Children Development Centre
Dilip Sircar, President


Suranjana Basu Das, Jt. Secretary

LAKE GARDENS WOMEN & CHILDREN DEVELOPMENT CENTRE

164/78 Lake Gardens, Block-A, Flat-14, Kolkata - 700045

INCOME & EXPENDITURE ACCOUNT FOR THE YEAR ENDED 31-03-2018		For the year ended 31 March, 2018	For the year ended 31 March, 2017
		₹	₹
INCOMES	Note		
Revenue from Operations	11	1,19,06,638.06	1,45,83,720.76
Other Income		-	695.00
Total Revenue		1,19,06,638.06	1,45,84,415.76
EXPENSES			
Programme Expenses	12	36,87,864.00	42,71,146.00
Employee Benefit Expenses	13	78,26,062.00	87,87,205.00
Administrative Expenses	14	26,38,778.85	30,96,250.52
Depreciation	6	1,49,740.06	1,65,018.84
Total Expenses		1,43,02,444.91	1,63,19,620.36
Surplus (excess of income over expenditure) before Tax		(23,95,806.85)	(17,35,204.60)
Tax Expenses:	2.06		
(1) Current Tax		-	-
(2) Deferred Tax		-	-
Total Tax Expenses		-	-
Surplus (excess of income over expenditure) after Tax		(23,95,806.85)	(17,35,204.60)

Significant Accounting Policies and Notes

1 & 2

The accompanying notes are forming an integral part of these Financial Statements.

As per our report of even date annexed herewith

For A DUTTA AND ASSOCIATES

Chartered Accountants

Firm Registration No. 328193E

Sandip Gupta
Sandip Gupta (M.No. 304737)
(Partner)



Date : 22/08/2018
 Place: Kolkata

Lake Gardens Women & Children Development Centre
 For and on behalf of the Trustees

Dilip Sircar
Dilip Sircar, President

Lake Gardens Women & Children Development Centre

Suranjana Basu Das
Suranjana Basu Das, Jt. Secretary

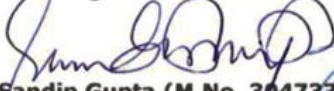
LAKE GARDENS WOMEN & CHILDREN DEVELOPMENT CENTRE

164/78 Lake Gardens, Block-A, Flat-14, Kolkata - 700045

Statement of Receipts And Payments for the Year Ended 31-03-2018	For the year ended 31 March, 2018	For the year ended 31 March, 2017
	₹	₹
Opening Balance		
- Cash in Hand	1,16,755.00	97,165.50
- Cash at Bank	33,35,882.06	37,44,081.82
Add: Receipts		
Receipts from Foreign Grants		
Grant Received from Foreign Agency	1,29,29,900.39	1,32,73,359.22
Bank Interest	1,62,538.00	1,75,457.30
Maturity proceeds of Fixed Deposits	31,73,086.00	52,68,325.00
Recovery of Advance to Bhai Bhai Sangha	-	3,450.00
Recovery of Advance Given	22,90,910.53	29,67,309.00
Received from disallowed Expenses	178.00	-
Gratuity received from LIC for staff	-	-
Inter Project Fund Transfers	81,43,896.84	3,16,10,089.44
Advance recovered from Lease Rent	-	2,75,400.00
Security for Rent Received	3,50,000.00	-
Reimbursements Received from TDH	-	-
Reimbursements Received from PATH	-	27,259.00
Sale of Fixed Assets	16,500.00	-
Receipts from Local Grants		
Admission Fee Collection	70,960.00	27,460.00
Collection Against Subsidised Medicines	8,135.00	13,045.00
Fish & Chicken Collection	28,400.00	29,720.00
Collection from Craft & Knitting Section	1,63,430.00	1,49,816.00
Collection From Beautician Course	30,775.00	47,550.00
Collection From Exhibition	-	48,445.00
Collection From Mid Day Meal	45,070.00	59,289.00
Donation Received	1,70,964.00	4,18,632.00
Income From Open Day Celebration	1,460.00	4,609.00
Misc Income	2,588.10	11,407.24
Sale of Scrap Material	770.00	976.00
Service Charges on Revolving Fund	5,714.00	9,859.00
Membership Fees	900.00	800.00
Collection from Consultancy Charges	30,000.00	17,500.00
Interest on Term Deposit	2,657.00	-
Bank Interest	18,823.00	30,818.00
Mediclaime received from Insurance Co.	37,635.00	16,290.00
Gratuity received from LIC for staff	3,41,382.00	23,322.00
Recovery from Revolving Loan fund	1,10,023.00	93,811.00
Advance Recovery	2,88,001.00	2,83,065.00
Receivable received from Mahindra Project	-	-
Collection from Sishumela	-	-
Received from Rotary Club	1,36,113.00	-
Accrual Interest receivable (previous yr.)	31,131.00	-
Received from Fixed Deposit	5,00,000.00	-

As per our report of even date annexed herewith

For A DUTTA AND ASSOCIATES
Chartered Accountants
Firm Registration No. 328193E


Sandip Gupta (M.No. 304737)
(Partner)




Date : 22/08/2018
Place: Kolkata

Lake Gardens Women & Children Development Centre
For and on behalf of the Trustees


Dilip Sircar, President

Lake Gardens Women & Children Development Centre


Suranjana Basu Das, Jt. Secretary

LAKE GARDENS WOMEN & CHILDREN DEVELOPMENT CENTRE

164/78 Lake Gardens, Block-A, Flat-14, Kolkata - 700045

Statement of Receipts And Payments for the Year Ended 31-03-2018	For the year ended 31 March, 2018	For the year ended 31 March, 2017
	₹	₹
Less: Payments		
Payments from Foreign Grants		
Programme Expenses	36,54,916.75	42,07,149.00
Employee Benefit Expenses	67,43,764.00	78,74,485.00
Administrative Expenses	20,92,909.62	22,62,136.52
Professional Tax paid	23,970.00	18,620.00
Employee Provident Fund	10,07,337.00	13,64,736.00
TDS paid	66,105.20	72,705.30
Purchase of Fixed Assets	50,422.00	21,847.00
Fixed Deposit Made	26,00,000.00	30,00,000.00
Advance to Bhai Bhai Sangha	-	3,500.00
Advances Given	27,57,766.00	28,93,544.70
Paid to PATH Welfare Society	-	12,388.00
Paid to RDA	-	5,120.00
Paid to SMOKUS	-	2,500.00
Paid to Malda Sahayogita Samiti	-	2,994.00
Paid to NISTHA, 24 Parganas	-	1,600.00
Paid to Kaikhali Samadhan Samity	-	2,660.00
Paid to Indian Institute of Traiing & Development	-	65,377.00
Paid to DISHARI	26,000.00	-
Paid to Don Bosco	42,525.00	-
Security Deposit Paid	1,00,000.00	15,000.00
Grant refunded to Path Welfare Society	11,604.00	-
Gratuity payable paid (Previous Yr.)	-	61,122.00
Refund of Corpus to PATH Welfare Society on 10.08.2016	-	1,79,081.00
Inter Project Fund Transfers	77,12,657.84	3,16,10,089.44

As per our report of even date annexed herewith

For A DUTTA AND ASSOCIATES
Chartered Accountants
Firm Registration No. 328193E

Sandip Gupta
Sandip Gupta (M.No. 304737)
(Partner)



Date : 22/08/2018
Place: Kolkata

Lake Gardens Women & Children Development Centre

For and on behalf of the Trustees

[Signature]
President

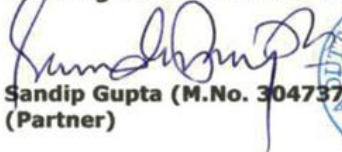
Lake Gardens Women & Children Development Centre

Suranjana Basu Das
Suranjana Basu Das, Jt. Secretary

Statement of Receipts And Payments for the Year Ended 31-03-2018	For the year ended 31 March, 2018	For the year ended 31 March, 2017
	₹	₹
Payments from Local Grants		
Benefit to Student	29,029.00	29,906.00
Beautician Materials	9,488.00	15,900.00
Cook/Food/Tiffin Expenses	-	4,884.50
Craft Material	36,095.00	91,177.00
AMC of Sewing Machines	6,000.00	6,000.00
Exhibition	2,266.00	6,136.00
Health & Hygiene Program	20,120.00	24,720.00
Knitting Materials	9,044.00	2,700.00
AMC of knitting machines	4,800.00	7,200.00
Medical Support	11,000.00	14,168.00
Medicine & Consumable	4,600.00	-
Website Expenses	10,736.00	25,000.00
Training/Meeting/Workshop/Programme	7,742.00	2,909.00
Day observation	600.00	-
Salary of Accountant	6,000.00	6,000.00
Salary of Supervisor	6,000.00	6,000.00
Salary of Programme Head	6,000.00	-
Exgratia	12,000.00	18,000.00
Bank Charges	95.58	230.00
Commission to Dakhinapan (Coutner Sales Girls)	2,312.00	2,291.00
Electrical Expenses	9,200.00	6,590.00
Misc. Expenses	-	400.00
Office Expenses	87,385.75	31,411.00
Open Day Celebration	-	6,716.00
Printing and Stationary	2,644.00	8,759.00
Professional Fees	2,160.00	2,250.00
Repair & Maintenance	14,173.00	51,385.00
Staff Welfare Expenses	-	2,000.00
Subscription Paid	1,100.00	1,100.00
Telephone/Internet/Fax	194.00	3,554.00
Travel & Conveyance	31,319.00	20,758.00
Travel to Office Bearer	42,750.00	1,87,845.00
Fixed Assets purchased	29,512.00	33,591.00
Fixed Deposit Made	7,00,000.00	5,00,000.00
TDS Paid	1,931.00	1,822.00
Outstanding Audit Fees	9,135.00	9,000.00
Mediclaime Paid to Staff	37,635.00	20,590.00
Credit to Revolving fund	1,00,000.00	93,000.00
Gratuity paid to staff	3,35,009.00	12,900.00
Outstanding Office Expenses	51,116.00	-
Outstanding AMC for Sewing Machines	6,120.00	-
Advance Given	2,47,053.00	3,35,126.00
Paid to Institute of Training Development	-	7,000.00
Expenses for Rotary Club	86,279.00	-
Closing Balance		
- Cash in Hand	1,12,553.00	1,16,755.00
- Cash at Bank	35,63,404.18	33,35,882.06

As per our report of even date annexed herewith

For A DUTTA AND ASSOCIATES
Chartered Accountants
Firm Registration No. 328193E


Sandip Gupta (M.No. 304737)
(Partner)



Date : 22/08/2018
Place: Kolkata

Lake Gardens Women's Child Development Centre


Dina Simas, President
Lake Gardens Women's Child Development Centre


Suranjana Basu Das, Jt. Secretary

LAKE GARDENS WOMEN & CHILDREN DEVELOPMENT CENTRE

SIGNIFICANT ACCOUNTING POLICIES AND NOTES TO FINANCIAL STATEMENTS

1 NATURE OF OPERATION:

Lake Gardens Women and Children Development Centre (LGWDC) is a non profit organisation founded in 1992 by social scientist Cecilie Sircar and her husband Late Shyamal Sircar and is registered under West Bengal Societies Registration Act 1961. The organization initially started with the objective to improve the quality of life of the girl children and women in the shanties along the railway track between Dhakuria and Lake gardens station under jurisdiction of the Municipal Corporation of Kolkata.

In the beginning of the organisation LGWDC adopted a centre based integrated holistic development approach wherein joyful and remedial educational opportunities for mainstreaming, health care, vocational skill development for income generation.

The core value of the organisation is to render service to the marginalised children and women living in the slums along the railway tracks near to Lake Gardens Station, as well as Howrah and South 24 Parganas, West Bengal and is increasingly involved in community development and the eradication of malnourishment. Our work covers around 20,000 beneficiaries till date.

2 SIGNIFICANT ACCOUNTING POLICIES:

2.01 Basis of Preparation of Financial Statements

The Financial Statements have been prepared to comply in all material aspects with the notified Accounting Standards issued by ICAI. The Financial Statements are prepared under historical cost convention, on accrual basis except grant / donation received which is accounted for on cash basis.

2.02 Use of Estimates

The preparation of Financial Statements in conformity with the Generally Accepted Accounting Principles (GAAP) requires Management to make estimates and assumptions that affect the reported amount of assets and liabilities and disclosure of contingent liabilities at the date of the Financial Statement and the result of the operations during the reporting year end. Although these assumptions are made as per the Management's best knowledge of current events and actions, actual result may differ from these estimates.

2.03 Fixed Assets

Tangible

All Tangible Fixed Assets have been stated at historical cost less accumulated depreciation and impairment loss, if any. Cost comprises the purchase price and any attributable cost of bringing the asset to its working condition for its intended use.

2.04 Depreciation and Amortization.

Depreciation on Tangible Fixed Assets has been provided on the Written Down Value method at the rates adopted by the Management. The rates are disclosed in Note 6 : Fixed Assets.

2.05 Revenue Recognition

Revenue is recognized to the extent that it is probable that the economic benefits will flow to the Society and the revenue can be reliably measured.

Grant and Donation Incomes are recognized on cash basis and other incomes are recognized on accrual basis.

2.06 Taxes on Income

Current Tax : The Society got registration under section 12A of Income Tax Act, 1961 as Charitable Non-Government Organization vide registration no. DIT(E)/S-142/8E/239 dated 14/03/2001.

As per the above registration all incomes from all of its charitable activities are exempted under section 11 of the said Act.

Deferred Tax is the tax effect on timing difference(s). Since the society enjoys tax exemption under section 11, no Deferred Tax Assets or Deferred Tax Liabilities have been recognized.

2.07 Cash and Cash Equivalents

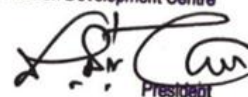
Cash and Cash equivalents in the Financial Statement comprise cash in hand and unrestricted cash at Bank and short term Investments with an original maturity of three months or less.

2.08 Contingent Liability and Contingent Asset

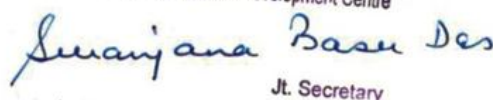
Contingent liability is disclosed for (i) possible obligations which will be confirmed only by future not wholly within the control of the Society or (ii) present obligations arising from past events where it is not probable that an outflow of resources will be required to settle the obligation or a reliable estimate of the amount of the obligation cannot be made. Contingent asset is not recognized in the financial statements since this may result in the recognition of income that may never be realized.



Lake Gardens Women & Children Development Centre


President

Lake Gardens Women & Children Development Centre


Jt. Secretary

3		CORPUS FUND		₹	₹	
Particulars		As at	As at	31-03-2018	31-03-2017	
Opening				81,39,002.61	1,01,02,185.21	
Add: Addition				-	-	
Less: TDS Receivable				-	(48,897.00)	
Less: Refund of Corpus on 10.08.2016				-	(1,79,081.00)	
Add: Transfer from Reserve and Surplus (Refer note-4)				(23,95,806.85)	(17,35,204.60)	
Closing				57,43,195.76	81,39,002.61	
4		RESERVES & SURPLUS		₹	₹	
Particulars		As at	As at	31-03-2018	31-03-2017	
A. Surplus in Income & Expenditure Account.						
Opening Balance				-	-	
Add/(Less): Surplus/(Deficit) for the Year				(23,95,806.85)	(17,35,204.60)	
Less: Transferred to Corpus				23,95,806.85	17,35,204.60	
Surplus - Closing Balance				-	-	
5		Other Current Liabilities		As at	As at	
Particulars		31-03-2018	31-03-2017	₹	₹	
Statutory Liabilities						
Professional Tax Payable				830.00	1,520.00	
Employee Provident Fund Payable				92,061.00	1,29,876.00	
Tax Deducted at Sources				10,570.00	14,462.20	
Trade Liabilities				-	-	
Payable to Charu Medical, Santoshpur				10,095.00	-	
Outstanding Expenses				-	-	
Audit Fees				81,959.00	66,150.00	
Cleaning Expenses				200.00	4,938.00	
Consultancy Fee				2,160.00	2,000.00	
Cook, food & Tiffin Expenses				-	5,812.00	
Doctor Fees				29,250.00	12,500.00	
Electricity				2,760.00	-	
Outstanding Expenses				38,264.00	52,722.00	
Rent				90,497.00	3,07,921.00	
Running of Balwadi centres				9,100.00	400.00	
Staff Salary				39,749.00	22,487.00	
Telephone				200.00	300.00	
Nutration Training & Practical Demonstration				10,500.00	-	
Travelling & Conveyance				18,918.00	98.00	
Grocery Materials				4,895.00	6,799.00	
Job Skill Training				-	8,880.00	
Health Camp				-	1,959.00	
Medicines & Consumables				-	7,765.00	
Printing & Stationary				3,627.00	-	
Admin Charges				7,461.00	-	
Honorarium for Touch Agents				27,000.00	-	
Furniture & Fixture				-	12,000.00	
Repair & Maintenance				100.00	6,120.00	
A.1.2 Sensitization Meeting with Parents				30.00	-	
A.3.4. IGA Training for SHG Members				6,624.00	-	
Unspent Grant Balance as on 31.03.2018				24,01,138.43	3,50,000.00	
IEC Materials				50.00	50.00	
Gratuity Payable				16,795.00	10,422.00	
Inter Project Balances				90,056.48	3,60,639.00	
Total				29,94,889.91	13,85,820.20	
6		Fixed Assets		As at	As at	
Nature of Asset (% of Depreciation)	As at 01/04/2015	Addition	Deletion	Depreciation for the Year	As at 31-03-2018	As at 31-03-2017
A. Tangible						
1. Computer & Peripherals (60%)	49,016.04	54,834.00	0.00	62,310.41	41,539.62	49,016.04
2. Electrical Equipments (10%)	85,710.15	0.00	0.00	8,571.25	77,138.90	85,710.15
3. Furniture & Fixture (10%)	5,74,090.51	3,650.00	0.00	57,774.30	5,19,966.21	5,74,090.51
4. Machinery & Equipments (15%)	1,59,636.31	9,450.00	28,528.14	21,084.10	1,19,474.07	1,59,636.31
Total	8,68,453.00	67,934.00	28,528.14	1,49,740.06	7,58,118.79	8,68,453.00
Note: During the FY management has decided to depreciate carrying amount of Crèche Material and School Materials.						
8		Cash and Cash Equivalents.		As at	As at	
Particulars		31-03-2018	31-03-2017	₹	₹	
(a) Balances with banks				35,63,404.18	33,35,882.06	
(b) Cash in hand				1,12,553.00	1,16,755.00	
Total				36,75,957.18	34,52,637.06	

Lake Gardens Women & Children Development Centre

Sanayana Basu Das
Jt. Secretary



Lake Gardens Women & Children Development Centre

[Signature]
President

9			
Current Investments			
Particulars	As at	As at	
	31-03-2018	31-03-2017	
	₹	₹	
Fixed Deposits			
- SBI 36599704543	26,00,000.00	26,00,000.00	
- SBI 367112902245	-	4,00,000.00	
- SBI 35731846623	-	5,00,000.00	
- SBI 36883437903	7,00,000.00	-	
Total	33,00,000.00	35,00,000.00	
10			
Other Current Assets			
Particulars	As at	As at	
	31-03-2018	31-03-2017	
	₹	₹	
Advances to Support to Children and Women in Selected Slums of Kolkata	20,062.00	-	
Prepaid Rent	13,580.22	21,563.25	
Staff Advance	1,04,074.00	1,44,878.00	
Security deposit for Rent	1,08,700.00	3,65,000.00	
Advance to "The Chatra Mitali Club"	41,600.00	-	
Advances	8,828.00	672.50	
Accrued Interest in Fixed Deposits	55,310.00	43,724.00	
Tax Deducted at Sources	50,234.00	26,253.00	
Disallowed Expenditure	-	178.00	
Inter Project Balances	69,864.48	3,60,639.00	
Excess Expended Grant receivable	56,512.00	-	
Excess Payment of Professional tax	2,380.00	-	
Deffered Lease Rent Expenses	1,61,574.00	2,09,877.00	
Revolving fund*	2,95,404.00	4,65,427.00	
*(During FY 2017-18, Executive Bard o LGWDC decided to write of			
Security Deposit			
Calcutta Telecom	2,000.00	2,000.00	
Rabindra Sarabor Stadium	500.00	500.00	
CESC Ltd.	11,887.00	11,887.00	
Usha Martin Telecom Ltd.	1,500.00	1,500.00	
Reimbursable from Rotary Club	-	49,634.00	
Total	10,04,009.70	17,03,732.75	
11			
Revenue from operations			
Particulars	For the year	For the year	
	ended	ended	
	31-03-2018	31-03-2017	
	₹	₹	
Income from Foreign Fund			
Grant Received From Foreign Agency (refer Note for Details)	1,29,29,900.39	1,32,73,359.22	
Add:- Unspent Grant Balance as on 31.03.2017 available for spent	1,50,000.00	-	
Less:- Unspent Grant Balance as on 31.03.2018	(22,01,138.43)	-	
Less:- Grant refunded to Path Welfare Society	(11,604.00)	-	
Add:- Excess Expended Grant receivable	56,512.00	-	
	1,09,23,669.96	1,32,73,359.22	
Bank Interest	1,62,538.00	1,75,457.30	
Interest on Fixed Deposit	1,93,847.00	2,30,387.00	
Income from Local Fund			
Admission Fee Collection			
Admission Fees Collection (Bulbuli)	19,080.00	7,320.00	
Admission Fees Collection (Butterfly)	17,540.00	6,140.00	
Admission Fees Collection (Collibri)	15,140.00	7,080.00	
Admission Fees Collection (Yasmin)	19,200.00	6,920.00	
Collection Against Subsidised Medicines	-	-	
Collection From Medicine (Tikiapara)	1,305.00	3,491.00	
Collection From Medicine (Santoshpur)	5,645.00	5,804.00	
Collection From Medicine (Bulbuli)	320.00	1,120.00	
Collection From Medicine (Butterfly)	250.00	695.00	
Collection From Medicine (Collibri)	170.00	835.00	
Collection From Medicine (Yasmine)	445.00	1,100.00	
Fish & Chicken Collection	-	-	
Fish & Chicken Collection (Bulbuli)	8,080.00	8,960.00	
Fish & Chicken Collection (Butterfly)	6,640.00	6,480.00	
Fish & Chicken Collection (Collibri)	4,680.00	5,680.00	
Fish & Chicken Collection (Yasmine)	9,000.00	8,600.00	

Lake Gardens Women & Children Development Centre

Suvarjana Basu Das
Jt. Secretary



Lake Gardens Women & Children Development Centre

S. A. Das
President

Particulars	For the year ended	For the year ended
	31-03-2018	31-03-2017
Collection from Craft & Knitting Section	-	-
Collection from Craft Section	1,29,755.00	1,10,181.00
Collection From Dakshinapan Counter	23,120.00	22,900.00
Collection from Knitting Section	10,555.00	16,735.00
Collection From Beautician Course	30,775.00	47,550.00
Collection From Exhibition	-	48,445.00
Collection From Mid Day Meal	45,070.00	59,289.00
Donation Received	1,70,964.00	4,18,632.00
Income From Open Day Celebration	1,460.00	4,609.00
Misc Income	2,588.10	11,407.24
Sale of Scrap Material	770.00	976.00
Service Charges on Revolving Fund	5,714.00	9,859.00
Membership Fees	900.00	800.00
Collection from Consultancy Charges	30,000.00	17,500.00
Interest on Term Deposit	48,594.00	34,591.00
Bank Interest	18,823.00	30,818.00
Total	1,19,06,638.06	1,45,83,720.76

11 **Note: Details of Grant Received :**

Name of Project	Particulars of Doner	Date of Receipt	Amount received in	Amount received in
CAMPAIGN ON ECOLOGICAL RIGHTS BY YOUTH NETWORK, WEST BENGAL	TERRE DES HOMMES DEUTSCHLAND E.V. RUPPENKAMPSTRASSE 11 A, D-49084 OSNABRUECK GERMANY	22-09-2017	3,53,034.39	3,24,088.29
SIGN OF HOPE	SIGN OF HOPE E.V. GERMANY HOFFNUNJSZEICHEN, SCHNECKENBURGSTR. 11D D-78467 KONSTANZ, GERMANY	-	-	8,77,118.00
NARIKALYAN	GERMAN DOCTORS e.V. LOBESTRABE 1A 53173 BONN, GERMANY	30-06-2017 25-09-2017	4,51,495.00 5,63,745.00	18,95,890.00
OUTREACH	GERMAN DOCTORS e.V. LOBESTRABE 1A- 53173 BONN, GERMANY	30-06-2017 25-09-2017 29-12-2017 26-03-2018	3,92,467.00 3,92,467.00 3,92,467.00 3,16,076.00	15,94,201.00
SUPPORT TO CHILDREN AND WOMEN IN SELECTED SLUMS OF CHDP - TIKIAPARA (PROJECT NO. 22766)	INDIEN HILFE e.V Luitpoldstr. 20, 82211 Herrsching, Germany	19-04-2017 31-07-2017 22-12-2017	10,00,000.00 10,00,000.00 2,50,000.00	28,00,000.00
ICDP - SANTOSHPUR (PROJECT NO. 22767)	KINDER NOT HILFE DUSSELDORFER LANDSTRSBE 180 47249 DUISBURG GERMANY	07-04-2017 10-08-2017 25-01-2018	6,26,442.00 6,32,496.00 5,89,992.00	17,74,787.60
Freunde und Förderer Lake Gardens e.V.	KINDER NOT HILFE DUSSELDORFER LANDSTRSBE 180 47249 DUISBURG GERMANY	22-05-2017 17-07-2017 16-10-2017 09-01-2018	64,021.00 6,41,270.00 6,64,447.00 6,59,890.00	25,72,429.33
DESTINATION UNKNOWN	Freunde und Förderer Lake Gardens e.V. LAKE GARDENS E.V. FLUSSSTR. 27 D-50374 ERFTSTADT, GERMANY	11-04-2017 01-12-2017	23,69,261.00 11,39,227.00	14,34,845.00
TUBERCULOSIS HEALTH ACTION LEARNING INITIATIVE (THALI)	PATH WELFARE SOCIETY 2, GOPE LANE, 1st FLOOR, KOLKATA-14	14-07-2017	57,000.00	-
		19-06-2017 10-07-2017 14-08-2017 12-09-2017 13-10-2017 04-12-2017 19-12-2017 18-01-2018 13-02-2018 13-03-2018	41,250.00 30,706.00 67,825.00 73,891.00 36,508.00 44,000.00 21,000.00 27,423.00 10,500.00 21,000.00	-
Total			1,29,29,900.39	1,32,73,359.22



Lake Gardens Women & Children Development Centre

Sunayana Basu Das
Jt. Secretary

Lake Gardens Women & Children Development Centre

[Signature]
President

Particulars	For the year ended	For the year ended
	31-03-2018	31-03-2017
	₹	₹
Programme Expenses		
Program Expenses of Foreign Projects		
For Childhood Development Project (Project No. 22766)		
Direct Expenses on Project Activities	-	-
A.1 Reducing Malnutrition in Children		
Health Clinic / Doctor fees	7,500	1,05,000
Rent for Clinic	22,980	68,940
Medicines & Consumables	12,913	88,902
Nutrition Training and practical demonstration on Clinic day	4,390	21,619
A.2 Promoting Child Survival & Safe Motherhood		
Health Camp	-	14,073
Organised / Strengthen Children on Health & Child Right Issue	2,680	19,953
Health Training for Adolescent Girls	-	4,775
Strengthening SHGs on Social Issues	-	2,010
Strengthen the existing SHGs and formation of new SHGs	-	5,003
Training on operational management to the SHG leaders such as accounts management, book keeping, conflict resolution	-	6,010
Leadership and Cluster formation	-	6,259
Exposure of cluster leaders	-	6,684
Awareness session with community members on various entitlements	2,010	6,005
Stake holders meetings	-	4,991
Networking meeting with GOs and NGOs	422	2,440
A.3 Reducing Child Marriage		
Strengthening of youth groups	-	18,005
Observing child rights week	-	4,970
A.4 Promoting Small Family norm among the Target Community		
Health Awareness Session	1,275	9,913
A.6 Staff Capacity Building		
Staff meetings - monthly quarterly	1,005	5,842
A. Strengthening CLA/Federation		
A.3 Zonal Level Monthly Meeting	675	-
A4 Strengthening of CLA	1,840	-
A5 Functional Literacy program for SHG members	100	-
A8 Advocacy lobby training for CLA	2,300	-
C. Political Empowerment		
C1. Awareness Session with Community Members	2,810	-
C2. Networking Meeting with GOS & NGOS	1,170	-
D. Social Changes		
D2 Issue base Campaign(Child Labour)	1,990	-
D3 Day Observation (Literacy day, Girl child day, Orange)	150	-
D.4 Child Sports	7,360	-
E.Improve Health & Environment		
E.1 Health Clinic for Children / Doctor Fees	30,000	-
E.4 Medicines Consumables	18,411	-
E.5 Nutrition Training & Practical Demonstration	15,107	-
E6 Awareness & campaign on Health Related issues & Health Camp	280	-
E7 Awareness & campaign on Environment Related issues	1,860	-
F Staff Capacity Building		
F.3 Staff Meeting	1,088	-
For Destination Unknow Programme		
Awareness Programme with Families	9,092	-
Cultural Activities	15,790	-
District Level Interaction	5,264	-
Regular Interaction with Children	13,610	-
Sensitization Meeting	1,640	-
For Campaign On Ecological Rights By Youth Network, West Bengal		
District Level Orientation Meetings	-	1,08,434
Core Committee Meeting	-	2,036
Workshop with Youth Partner Organizations	-	76,925
International Child Rights Week	-	1,763
International Environment Day	-	23,741
World Earth Day	-	13,825
1 Monthly Meeting of Youth Groups	10,318	500
2 Core Committee Meeting of Network Members	11,500	-
3 Capacity Building for Youth Network Memebers	1,22,547	-
4. Workshop in School	19,203	-
5. Workshops with Stakeholders	1,510	-
6-Organising Awareness Events	38,906	450
7 IEC Materials	31,584	-
8 Exposure Visit of Youths	39,453	-

Continue...

Lake Gardens Women & Children Development Centre

Swayidana
Bose Das
Jt. Secretary



Lake Gardens Women & Children Development Centre

[Signature]
President

Particulars	For the year ended	For the year ended
	31-03-2018	31-03-2017
	₹	₹
For Integrated Community Development Project (Project No. 22767)	-	-
A. Program Cost	-	-
A.1 Education	-	-
A.1.1 Social Mobilisation	30,791	61,250
A.1.2 Sensitization Meeting with Parents	17,459	1,13,850
A.1.3 Running and Functioning 08 Balwadis	1,24,910	1,30,560
A.1.5 Interface between WBC and WEC/SMC	4,702	3,138
A.1.6 Meeting/Workshop on Development of Monitoring Tools	-	8,250
A.1.8 Organising Children in Groups	24,867	32,341
A.1.9 Observation of International Child Rights Week	4,434	15,775
A.1.10 Capacity Building on Quality Education	9,308	25,191
A.2 Health Program	-	-
A.2.1 Sensitization and Motivating Mother	1,28,433	82,775
A.2.2 Capacity Building of Mother Committee	-	13,795
A.2.3 Quarterly Meeting with Mother Committee	11,185	19,219
A.2.4 Follow up Trainings of Volunteer	6,233	16,037
A.2.6 Orientation of Adolescent Girls	20,398	28,328
A.3 Livelihood	-	-
A.3.2 Planning for Income Generation Activities	5,477	6,471
A.3.3 Training on MED	1,901	19,158
A.3.4 IGA Training for SHG Members	74,881	13,919
A.3.6 Awareness Session with Community Members	9,292	30,127
A.4 Women Empowerment	-	-
A.4.3 Training on Orientation Management to SHG Leaders	42,612	30,116
A.4.4 Leadership & Cluster Foundation	8,459	-
A.4.6 Training to federation leaders on federation management	25,230	-
A.4.7 Observation of International Women Day	-	4,228
A.4.7 Training on Strengthening of SHG	8,386	-
A.5 Capacity Building of Staff	-	-
A.5.2 Orientation Training Field Staff on SHG Format	35,162	54,133
A.5.3 Workshop on Quality Education	35,279	-
A.5.3 Workshop on Monitoring System Development	-	31,044
A.5.4 Workshop on Result Based Reporting	39,570	16,791
For Narikalyan Project	-	-
A:- VOCATIONAL TRAINING	-	-
1. Tailoring	18,005	22,556
2. Embroidery	6,773	3,607
4. Beautician Course	-	31,462
Annual Maintenance for Craft Machine	-	6,164
B:- EDUCATION PROGRAM	-	-
Education Material	-	570
C:- SUPPLEMENTARY NUTRITION	-	-
Emergency Medical Support	-	279
Supplementary Nutrition	1,10,757	1,27,306
Training on Low Cost Nutrition	4,000	13,942
D:- WOMEN GROUP CAPACITY BUILDING TRAINING	-	-
Exposure Visit	-	25,000
Leadership Training	3,000	8,000
Materials for Trainings	301	980
Refreshment at Training	4,313	12,817
Travelling for Trainer	1,785	3,158
For Outreach Medical Project	-	-
Awareness & Training	25,063	24,906
Special Training	-	-
Cleaning/cooking/security	60,615	53,571
Doctor visit	2,37,500	2,47,500
Eezee Cup	-	-
Equipments	-	8,568
Medicine	1,50,875	1,44,796
Nutrimix & Milk	1,29,393	1,23,288
Oil / Jaggery	38,744	33,193
For Support To Children And Women In Selected Slums Of Kolkata	-	-
C. Running Expenses- Institutional Requirements	-	-
C.1. Monthly Review and Planning	-	9,864
C.2. Workshop on Child Protection Policy	-	4,970
C.3. Half-yearly Capacity Building Training	2,634	9,100
C.4. Half-yearly Refresher Training on Childhood Development	1,675	4,198
D. Running Expenses - Implementation	-	-
D.1. Running Expenses- Education	-	-
D.1.1. Education Materials	9,768	8,325

Continue...

Lake Gardens Women & Children Development Centre

Sanjana Basu Das
Jt. Secretary



Lake Gardens Women & Children Development Centre

[Signature]
President

Particulars	For the year ended	For the year ended
	31-03-2018	31-03-2017
	₹	₹
D.2. Running Expenses - Health	-	-
D.2.1. Personal Child Care Materials for Creches	7,542	14,781
D.2.2. General Child Care Materials	9,127	27,546
D.2.3. Regular Health Check up with Medicines	83,463	1,43,780
D.2.4. Immediate Aid for Emergency Cases	-	1,100
D.2.5. Preliminary Medical Test for New Children	-	14,520
D.3. Running Expenses - Nutrition	-	-
D.3.1. Food & Nutrition - Fruits & vegetables	87,311	1,05,757
D.3.1. Food & Nutrition - Milk	1,05,695	1,36,264
D.3.1. Food & Nutrition - Carrying Charges	12,000	12,000
D.3.1. Food & Nutrition - Fish & Chicken	77,154	65,697
D.3.1. Food & Nutrition - Grocery Materials	1,40,732	1,70,527
D.3.1. Food & Nutrition - Power & Fuel	21,718	35,228
D.3.1. Food & Nutrition - Sweets	-	40
D.4. Family to Community level Activities	-	-
D.4.1 Monthly Parents Meeting for Each Creche	-	44,889
D.4.2 Community Awareness Programme	240	-
D.4.2 Parents Grooming Centre	1,277	16,793
D.4.3 Family Hygiene Kit	9,500	40,996
D.4.4. Job Skill Training	(8,880)	50,880
For Prevention And Protection Of Children In Origin And Destination During	-	-
101 Child Labour Situation will be assessed in terms of basic education and protection both at origin and destination	-	-
10101 Situational Assessment of the Children and the family would be carried out at both origin and destination	-	-
10102 Staff orientation and training of Child Labour situation	-	-
10104 Group meeting / PRA to involve children, families and other actors at destination point	-	-
10105 Group meeting / PRA to involve children, families and other actor at origin point	-	-
10106 Special dialogue with the other actors at destination point	-	-
102 Ensure qualitative development of Children through participatory process	-	-
10201 Establishment of the creative Learning Centre (CLC) for providing Creative learning and basic education (set-up cost 10000 + running cost 4000 per month)	-	-
103 Evolve behavioural change among the community and other actors towards child labour situation	-	-
10301 Meeting with community and other actors at the destination point on child labour situation and its ill effects	-	-
10302 Exchange Special dialogues with employers, local councilors, Government Officers and local school teachers at destination point	-	-
10304 Meeting with community and other actors at the origin point on unsafe migration and protection of the children	-	-
For Sign of Hope	-	-
Boys Technical Course	-	44,454
Cook, Food, Tiffin	2,53,808	2,72,388
Medical Expenses	12,848	10,696
School Materials	14,000	3,894
For Tuberculosis Health Action Learning Initiative (THALI)	-	-
By Local Organisation for Case Detection, Systemic	-	-
Case Management by TA in 3 Installments	250	-
Confirmed Case Refer by TA	600	-
Incentive for Facilitation of Meeting by TA	38,560	-
Collection, Collation and Sharing of Patients Relat	-	-
Facilitation of Events @ Rs. 1000/ward	8,512	-
TA work @ Rs. 3000 for 3 months	27,000	-
Communication by TA Community Mobilisation	-	-
Communication Cost for Community Worker	15,300	-
Community Sensitization by Facilitation of Meetings	-	-
Event Cost From Monthly Meetins with Diffrent Community	1,11,470	-
Continue...	-	-

Lake Gardens Women & Children Development Centre

Sumanjana Basu Das
Jt. Secretary



Lake Gardens Women & Children Development Centre

[Signature]
President

Particulars	For the year ended	For the year ended
	31-03-2018	31-03-2017
	₹	₹
Community sensitization by facilitation of events with different	18,923	-
For Freunde Und Förderer Lake Gardens E.V.	-	-
Awareness & Training Program Expenses	26,047	38,156
Day observation	2,015	-
Community Development Program	-	-
Refreshment at SHG Meeting	14,100	16,808
Health Program	-	-
Cleaning Expense	14,453	16,064
Supplementary Nutrition	-	833
Mother & Child Course	1,39,723	1,48,263
Recreational Program	-	-
Christmas Gift & Celebration	1,88,874	2,20,121
Foundation Day Expenses	1,34,874	-
Exposure Visit	-	47,971
Vocational Program	-	-
Beautician & Massage Course	6,954	17,877
Craft Material	26,251	2,320
Program Expenses of Local Projects		
Benefit to Student	29,029.00	29,906.00
Beautician Materials	9,488.00	15,900.00
Cook/Food/Tiffin Expenses	-	4,884.50
Craft Material	36,095.00	91,177.00
AMC of Sewing Machines	6,000.00	12,120.00
Exhibition	2,266.00	6,136.00
Health & Hygiene Program	20,120.00	24,720.00
Knitting Materials	9,044.00	2,700.00
AMC of knitting machines	4,800.00	7,200.00
Medical Support	11,000.00	14,168.00
Medicine & Consumable	4,600.00	-
Website Expenses	10,736.00	25,000.00
Training/Meeting/Workshop/Programme	7,742.00	2,909.00
Day observation	600.00	-
Total	36,87,864.00	42,71,146.00

13

Particulars	For the year ended	For the year ended
	31-03-2018	31-03-2017
	₹	₹
Employee Benefit Expenses		
Salary / Remuneration to Staff	60,99,837.00	65,34,235.00
Salary / Remuneration to Part timers	3,26,872.00	2,42,439.00
Allowances to Staff	1,34,915.00	3,99,659.00
Employer's Contribution to PF (including Admin Charges)	6,72,375.00	8,06,626.00
Health Insurance for Staff	80,669.00	98,165.00
Gratuity Expenses	45,442.00	1,97,811.00
Educational Assistance to Staffs' Children	1,04,708.00	72,883.00
Exgratia	3,61,244.00	4,35,387.00
Total	78,26,062.00	87,87,205.00



Lake Gardens Women & Children Development Centre

Sumanjana Bose Das
Jt. Secretary

Lake Gardens Women & Children Development Centre

[Signature]
President

14	Administrative Expenses	Particulars	For the year ended	For the year ended
			31-03-2018	31-03-2017
			₹	₹
		Payment to Auditors		
		- As Audit Fees	65,959.00	66,150.00
		Bank Charges	9,629.45	4,528.11
		Consultancy Fees	35,860.00	44,500.00
		Electricity Expenses	81,220.00	84,750.00
		Fire & Burglary Insurance	-	6,227.00
		Staff Welfare	-	2,108.00
		Office Expenses	1,29,317.25	2,99,857.00
		Other Expenses	35,238.50	1,394.91
		Printing & Stationery	2,48,407.50	2,07,984.50
		Cash in transit Insurance Expenses	3,540.00	3,408.00
		Rent, Rates & Taxes	7,42,800.00	12,66,377.00
		Repairs & Maintenance	1,28,943.00	1,62,771.00
		Telephone Expenses	47,253.00	76,727.00
		Travelling & Conveyance	9,25,751.00	8,59,361.00
		Induction oven + utensils for boiling water/milk etc	9,420.00	-
		Loss on sale of Fixed Assets	12,028.15	-
		Commission to Dakhinapan (Coutner Sales Girls)	2,312.00	2,291.00
		Bad Debt	1,60,000.00	-
		Open day celebration	-	6,716.00
		Subscription Paid	1,100.00	1,100.00
		Total	26,38,778.85	30,96,250.52
15	Segment Reporting			
	The Society operates in a single reportable segment i.e. Social Development, which have similar risk and returns for the purpose			
16	Previous Year Figures			
	Previous year's figures have been rearranged and regrouped wherever necessary.			

As per our report of even date annexed herewith

For **A DUTTA AND ASSOCIATES**
Chartered Accountants
Firm Registration No. 328193E


Sandip Gupta (M.No. 304737)
(Partner)

Date : 22/08/2018
Place: Kolkata



For and on behalf of the Trustees
Lake Gardens Women & Children Development Centre


Dilip Sijcar, President
Lake Gardens Women & Children Development Centre


Suranjana Basu Das, Jt. Secretary
Jt. Secretary

25

YEARS:1992-2017

**WE'VE SHARED EACH OTHER'S DREAMS
AND HELPED EACH OTHER MOULD
WE'VE DISCOVERED OUR POTENTIAL
AND WATCHED MIRACLES UNFOLD.
WE'VE EMBRACED OUR DIFFERENCES
AND FOUND OUR STRENGTHS
WE'VE BEEN EACH OTHER'S LIGHT
IN TIMES OF DARKNESS AND PAIN.
WE HAVE FOUGHT EVERY STORM
AND CHERISHED EVERY RAINBOW
WE HAVE BONDED OUR TIES
AND HELPED OUR SOCIETY GROW.**



**LAKE GARDENS WOMEN AND
CHILDREN DEVELOPMENT CENTRE**

Project Office: 648 Lake Gardens, Kolkata 700045, India Tel: +91 33 24171340
Regd. Office: 164/78 Lake Gardens, Flat A14, Kolkata 700045, India
Email: lgwcdc@hotmail.com Visit us at: www.lgwcdckol.org