



**ANNUAL  
REPORT  
2015-16**



**Lake  
Gardens  
Women &  
Children  
Development  
Centre**



# LAKE GARDENS WOMEN & CHILDREN DEVELOPMENT CENTRE

## Annual Report 2015-16

Head Office: 648 Lake Gardens, Kolkata 700045, India Tel: +91 33 24171340

Regd. Office: 164/78 Lake Gardens, Flat A14, Kolkata 700045, India

Email: [lgwcdc@hotmail.com](mailto:lgwcdc@hotmail.com) Visit us at: [www.lgwcdc-kol.org](http://www.lgwcdc-kol.org)



# Board Members: 2015-16

**Cäcilie Sircar**  
*Founder Member*  
164/78 Lake Gardens, Flat A14  
Kolkata-700045

**Suranjana Basu Das**  
*President*  
202 A Jodhpur Park, Kolkata- 700068

**Debparna Bhattacharya**  
*Vice President*  
12 Ekbalpur Road, Near Charbatti More,  
Kolkata 700023

**Dilip Sircar**  
*Joint-Secretary*  
8/1 Raja Raj Kissen Street, Kolkata -700006

**Robin Sircar**  
*Joint-Secretary*  
Daimlerstrasse 18, Saarbrücken, Germany

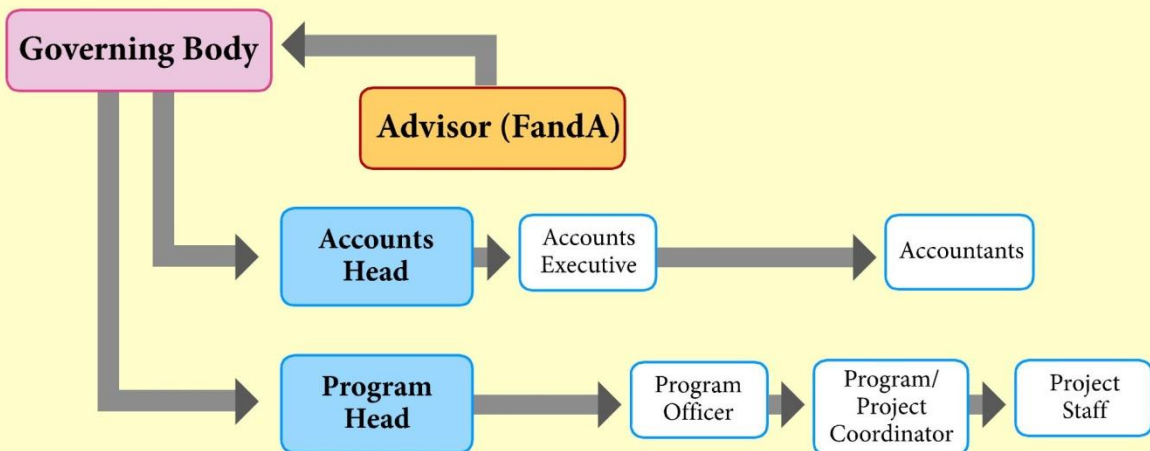
**Dilip Kr.Paul**  
*Treasurer*  
5C Radhakanta Gew Street, Kolkata-700004

**Ranjan Sircar - Member**  
Alpenstr. 13, 82377 Penzberg;  
Germany

**Kalyani Chatterjee - Member**  
160D, Bakul Bagan Road, Bhowanipore,  
Kolkata-700025

**Sumanta Banerjee - Member**  
32/14B, Beadon Street,  
Kolkata- 700006

## Organogram: 2015-16



# Secretary's Report

~ Dilip Sircar: Jt. Secretary

With the commencement of year 2015-2016, Lake Gardens Women & Children Development Centre (LGWDC) has stepped into its 23rd year and has appeared to be much more committed towards achieving its goals. Programs with focused project activities have been able to reach their targets by dint of effective feedback system. A positive work system has ensured a smooth functioning of the programs, Finance and Accounts, and Administration teams without any communication gap.

LGWDC has always emphasised on overall development of the Community. To comply with this, we are presently running four crèches successfully. We are even providing yearly scholarships to girls who come from poor economic background.

Since inception, LGWDC has focused on vocational training and have been providing in-house opportunities for girls and women. From 2007, we started offering technical courses for boys, and from 2013 we have been providing vocational training to both boys and girls. This year, in association with SEOMP, we are providing opportunity for boys and girls to undergo training there, after completion of which, they will be offered jobs.

Global organisations fighting for environmental causes have failed to adequately address all environmental issues, and in a degrading environment, no human rights can be secured. As a consequence, environmental rights have been inserted in several international agreements and constitutions of various States. LGWDC has also joined force in this cause with an aim to address various ecological issues. In partnership with other NGOs in West Bengal a youth network has been formed. This network functions under the name "Youth Challengers" and works towards creating awareness on ecological rights.

LGWDC has also actively participated in the campaign "Children on Move - Destination Unknown" to develop awareness on safe migration of children and ensure their rights. We have even conducted various awareness programs on Child Protection Day to support the movement against child labour and child protection.

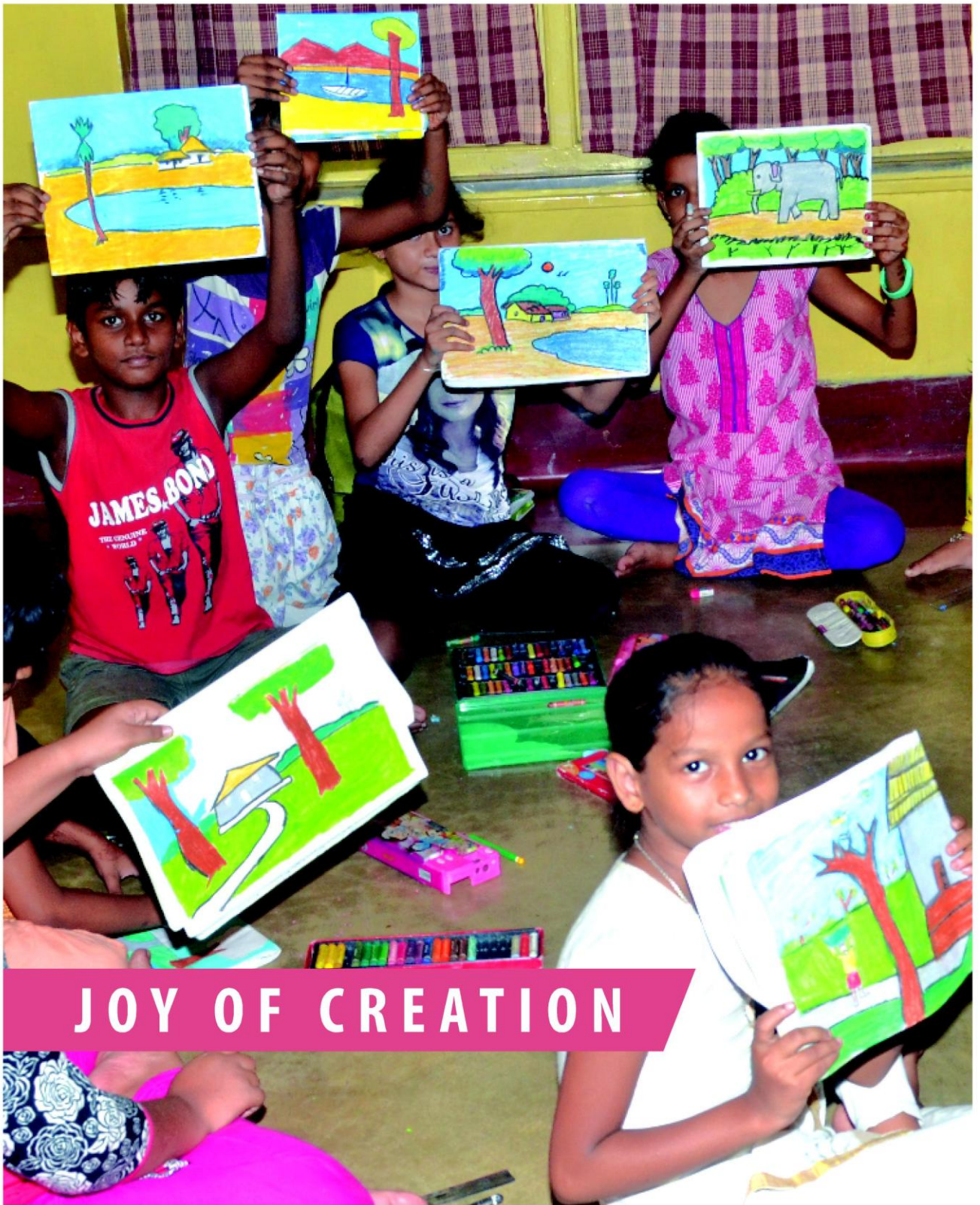
In relation to clinic activities, malnutrition is being fought with the support of a team of dedicated doctors. Apart from the above programs, Mother and Child course, various community awareness programs on social issues as well as health issues like Thalassaemia, Breast Cancer, Cervical Cancer etc. are also being conducted successfully.

For the past three years, some efforts were being made to provide basic education to the migrant children in the brick-kiln areas of Akra, Santoshpur. A pre-pilot project was taken up there however it was not found to be viable because of a Green Bench Directive that made most of the brick-kilns non-operative, in the process reducing the number of migrants.

The introduction of a computer awareness program for students of classes IV to IX, which was introduced two years back, has been thoroughly appreciated and whole-heartedly accepted by the students.

The process of remodelling and restructuring at LGWDC has become an on-going and continuous effort to march towards a brighter tomorrow. With the convincing and continuous support from the Funding Organisations, it is believed that coming years would be more committed for LGWDC and it will be an oath to all members of the Organisation that the responsibilities that have been bestowed on us by them, would surely be executed.





# JOY OF CREATION



# Project Head Office at Lake Gardens

## Background of the Organisation

Lake Gardens Women & Children Development Centre (LGWDC) is a non-profit organization. It was founded in 1992 by social scientist Ms. Cecilia Sircar and her husband Late Shyamal Sircar along with some like minded professionals and social workers. The main aim was to deliver service to the deprived children and women in the society and thereby to improve the quality of life of these children who lived in the shacks along the railway track between Dhakuria and Lake Gardens station and the slum areas of Masjidpara, Jodhpur Colony under the authority of the Kolkata Municipal Corporation.

Since its commencement, the main focus of the activities was on quality education for the girl children. With the flow of time changes came about in the social situation and needs and objectives of the organization evolved from being a service based approach to a rights based approach. It had also aimed to empower the women of the community through formation of SHGs, create awareness among the community people regarding their basic rights - with special emphasis on women's rights, child rights and health issues. The activities, therefore, also catered to problems related to malnutrition, illiteracy, poor health status etc.

LGWDC has adopted a community based, integrated holistic development approach wherein joyful learning is provided to the little children. Remedial educational opportunities are given to the community children who are enrolled in Government or municipal schools, but have no one to help them in their studies at home. Focused awareness programs on right to education, child labour, child marriage, gender equality, food and nutrition, reproductive health, mother and child health care and communicable diseases etc. are geared towards expanding the knowledge of both the children and women coming to the center.

The organization expanded its faction to the adjoining



*The main aim was to deliver service to the deprived children and women in the society and thereby to improve the quality of life of these children who lived in the shacks along the railway track between Dhakuria and Lake Gardens station and the slum areas of Masjidpara*

districts of Howrah and South 24 Parganas of Tikiapara, and Budge Budge Santoshpur respectively since 2010. The organisation puts its intervention in the Muslim community of Tikiapara slum in Howrah, and Santoshpur slum specifically on health aspects. Initially the main focus was to identify and screen the children of selected communities suffering from malnourishment. While doing so the field workers and senior professionals felt that community intervention and support system is an urgent need to combat malnourishment in the locality to the fullest extent and provide treatment and continuous support to combat the same. It was realised that malnourishment in these two localities is very common due to extreme poverty and severe lack of awareness on basic health and hygiene and lack of knowledge regarding healthy living and proper nutrition. As such, apart from treatment of malnourished children, other community activities to help eradication of the diseases and also to empower the community at large became an integral part of the program.

Women empowerment is another main objective of the organization. As part of the women empowerment program, LGWDC encourages all women beneficiaries to form SHGs. The organization believes that at first women have to understand the importance of regular savings for their own and to work in group for their better prospect. The members were made to understand the exploitation of money lenders and chit funds. Then they are encouraged to do small savings. A small fund has also been created for the members for micro credit program.

The organisation also started to work in the brick kilns of Akra Santoshpur in South 24 Parganas since 2012 with an aim to ensure the rights of the children who are coming there as migrants along with their families and getting engaged as child labour by providing basic education and knowledge on health and hygiene.



## Our Vision

LGWCDC looks forward to a society where women and children, especially girl children will enjoy equal rights and access to equal opportunities.

## Our Mission

Integrated holistic development of marginalized women and children to ensure quality life through community development, empowerment, education, healthcare service and economic self reliance. LGWCDC maintains Child Protection Policy and Committee Against Sexual Harassment at workplace.

## Aims and Objectives

- ♀ To provide centre based educational facilities to the children through joyful learning to reduce the drop-out rates and to prevent potential child labour
- ♀ To improve the health status of girl children and their mothers through health awareness, primary health care, supplementary nutrition program and nutrition training
- ♀ To improve the health status of children under five, specially underweight and malnourished, and simultaneously make the community people aware regarding low cost nutritive food and healthy living practices
- ♀ To promote and strengthen women's organisations in our project area in Lake Gardens, Howrah, Santoshpur focusing on savings and micro-credit
- ♀ To impart skill training to the young girls and women to inculcate alternative income generation activity as another mode of occupation
- ♀ To join in various networks with NGOs, Law enforcers, Municipal schools and existing networks such as CACL, IHNACL, Right to Education Forum to do advocacy and lobbying against various rights violations

## Human Resource Policy

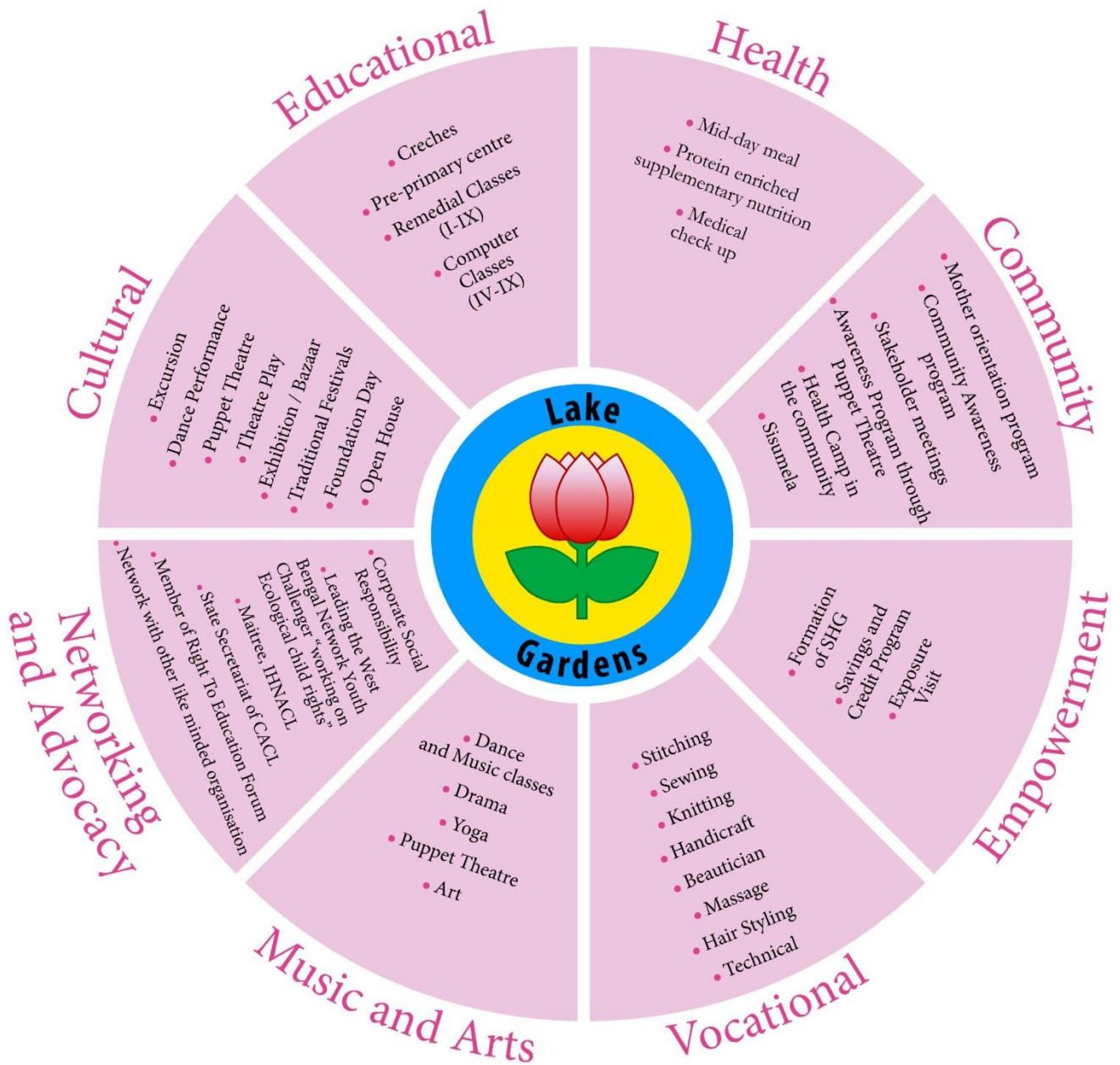
LGWCDC has developed its own HR Policy in March 2016. All staffs have been made aware of the contents of the policy and has been handed over a translated version for information and records.

## Child Protection Policy (CPP)

LGWCDC has its own Child Protection Policy (CPP). It is mandatory for all staff and any visitor or guests who come to the organization to sign this paper including the new recruitment before meeting the children. The children who are associated with LGWCDC also have the knowledge of this Child Protection Policy. The organisation is planning to form a Child Protection committee that will receive problems and resolve the same.



# Our Activities at a glance





# Educational Program

## Creche

LGWCDC runs four creches in ward nos. 92 and 93 of Kolkata Municipal Corporation (KMC). They are Yasmine, Bulbuli, Butterfly and Colibri. **In the last financial year 100 children between six months to six years were catered to.** These children were helped to grow up in a healthy and joyful manner.

The objective of running the Creches is to enhance the psychological, physical and mental development of children. After a rigorous process of survey and home visits the children are selected based on the following criteria:

- i) Belonging to SEC D and E category
- ii) Having working mothers
- iii) No one to look after the child at home when mother is at work



The crèche functions from 8.30am to 1.30pm, Mondays to Saturdays. Children of two years and above are provided with pre-primary education through joyful learning by different age appropriate TLMs. Special emphasis is given on children of four years and above who are prepared for admission to Class I in local government schools.

At the age of six years when children leave the crèche they are able to :

- a. Recite rhymes with action,
- b. Recognize colours, alphabets and numbers.
- c. Adopt daily living skills and eating habits

**In the year 2015-16, 37 children got admitted in Class I in local government school.**

## Pre-Primary Center (Outlet and Balwadi)



In the office premises of LGWCDC we function an outlet center for children aged between 4-6 years. Mainly children from montessori schools attend this center where we help them with their school work . This center functions from Monday to Friday on late afternoons, 3pm to 4pm.

Our Balwadi centres function in ward nos 8, 10,13 and 16 of Maheshtala Municipality. These centers cater to children aged between 3 and 5 years belonging to neighbourhood communities of Podirhati, Aynalpara, Kankhuli and 16 Bigha of Santoshpur, 24 Parganas(S).

**In the reporting period 156 children attended the classes.** Here also the children are prepared through joyful learning methods for admission to Class I in local schools.

A monthly parents' meeting is held to make them aware about the need and importance of education in formal schools. In each community there exists a Mothers' Committee that supervises and monitors the functioning of Balwadi Center and also motivates the parents to enroll children in formal school and check on drop outs.

**In the last financial year 47 children were enrolled in formal schools from Balwadi centres.**



## Remedial Coaching Class

With an aim to prevent drop outs and extend support to the school children between Class I to IX, LGWCDC conducts remedial coaching classes five days in a week. Qualified and experienced teachers guide the children in their daily lessons and home works.

The remedial classes are held in two shifts. The afternoon shift is from 12pm to 2pm for Classes I – III, while the evening shift is from 4.30pm to 6.30pm for Classes IV to IX.

**In the year 2015-16, 55 children attended the remedial classes.**

## Computer Classes

With the growing demand for technology LGWCDC has started a Computer course since 2014 where students belonging to Classes IV to IX are trained on Basics of Computer Application. The course duration is of one year.

**In the reporting period 20 students have undergone the training.**



## Health Program

### Supplementary Nutrition Program

Since the children who attend our various programs - crèche, outlet center, remedial classes in the evening shifts etc. belong to poor economic background and rarely get proper meals at home to augment their growth, we provide them with supplementary nutrition comprising of milk, biscuits, eggs, fruits, breads, and sandwiches.

### Mid Day Meal

With a view to ensure proper psychological, social and physical development in all children attending our crèche and remedial coachings in the afternoon, we provide mid-day meals comprising of a balanced diet with age appropriate calorie content.



## Health Check up for Creche children and children of Mother and Child Course and Remedial Classes

Qualified and experienced Pediatricians visit our Creches, Mother and Child Course and Remedial classes once a month for health check up of the children. All children requiring any medicine are provided the same, free of cost.

Post admission to Creche a routine health check up of each child is done where pathological tests are advised by the doctor. All expenses for the said tests are also borne by LGWCDC.



# Clinic for Treatment of malnourished children at Santoshpur (South 24 Parganas) and Tikiapara (Howrah)



In Santoshpur, LGWCDC runs community level clinics two days a week for children, adolescents and pregnant women with special focus on malnutrition. Medicines, as needed, are provided free to each patient.

Expert dietician explains and demonstrates to the mothers of malnourished children on how to prepare tasty yet low cost food with locally available vegetables.

Besides this, laddus prepared with Nutrimix, eggs and bananas are distributed to every patient who comes to the clinics. Every pregnant woman who is underweight is given a 250gm packet of Nutrimix powder with appropriate amount of oil and jaggery to prepare balls and have at home.

**In the year 2015-16, the clinic functioned for 103 days and a total of 1975 patients attended it. 27 children were diagnosed as SAM and 112 children were diagnosed as MAM. Of these 180 children got cured. 112 pregnant women and 147 new borns visited the clinic over the year.**

A clinic also functions two days in a week at the Project Office premises in Tikiapara for treatment of malnourished children, adolescent girls and pregnant women. Here, however, apart from cooking demonstration by Dietician only medicines are provided free of cost.

## Mother and Child Course

LGWCDC conducts a Mother and Child Course where the primary beneficiaries are the mothers of the targeted communities and their babies who are between two to six months of age. The main objectives of the program are:

1. To develop relation between child and parents
2. To develop relation between child and child
3. To develop relation and sharing of different experiences between mother and mother

**About 70 mothers have been benefited through this program.** The course duration is of one year and classes are held once a week. While working with the community the organisation felt that there is a necessity to create awareness among the mothers regarding the physical, cognitive and social development of their babies. A mother plays a vital role in the life of a child. She has to create a proper environment for her child that will have space for movement, play and creativity.

Through this course, mothers learn how to take care of the baby, how to develop a bonding with the child and the gradual development of the children. The leader demonstrates how to handle the babies, how to motivate the mothers who would help the babies in their movement and development. The mothers are also given training on cooking of low cost nutritious food for the babies. They are provided raw ingredients for food like suji, milk, vegetables and fruits from time to time.



They are also provided with hygiene kits which include dettol, soap for hand wash, tiny care, mustard oil (for massage), other baby care products etc.

The babies undergo medical check up every month by a Pediatrician. They are also provided with free medicine. The facilitators keep records of the babies' weight and height separately.



# Awareness Program

## Sensitization Program on Health

Health awareness sessions are held in all project areas where the mothers are motivated to feed their babies on breast milk till 6 months of age. Dietician explains and demonstrates how low cost nutritious food can be prepared by locally

available vegetables. A vegetable and fruit calendar is used to create awareness among the mothers about nutritious value of every seasonal vegetable and fruit.

Awareness sessions were also held on reproductive health, birth spacing, HIV/AIDS etc

Hygiene kits are distributed to mothers of crèche children once every three months. The kit comprises of soap, toothpaste, sanitary napkin etc. Before distribution of kits they are informed about the importance of using the same.



## Meeting with Anganwadi (ICDS) & IPP-8 worker

Over the year three meetings were held with the ICDS & IPP-8 workers and 40 persons attended the training. During the meetings Project Staff shared their work procedure with the ICDS and IPP-8 workers. A good liason has been developed with them wherein children and pregnant ladies are sent to IPP-8 for immunization and malnourished children are referred to the ICDS Center.

## Health Camps in Schools and community

With a view to reaching out to the masses LGWCDC organizes health camps in Schools and Communities.

In this year 5 Health camps were organised in schools in Tikiapara where children were checked by General physician and dentist. The blood group of many children were done as per physicians advice. All those who required medicine were given the same free of cost.

Further in Santoshpur and Lake Gardens, a Eye check up camp was held where patients were checked and those requiring glasses were provided with the same free of cost.

## School Mobilization Programme

During the reporting period LGWCDC organised 10 meetings on social mobilization. About 500 participants attended the programmes. The main objective of the programme was to create awareness among the people on the importance of education, environment and different social issues including abolition of child labour, demerits of early marriage. Rallies, group meetings, film show, street plays on child rights were the main tools used to create awareness in larger mass.

## Awareness session with community on various entitlements

Seven awareness sessions on various entitlements were conducted during the reporting period with 679 participants at Santoshpur project area to aware community people about their basic entitlement as a citizen of India. Through these sessions community people were informed about different government social security schemes of the Centre as well as the State, for the economically weaker section - Ration Card, Adhaar Card, Voters Card, Kanyashree, Pension for Physically Challenged person, Widow Pension, Khadya Sathi Scheme etc. Experts (external resource persons) facilitated these programs.

Awareness sessions on accessing of Social Security Schemes, Pension for labours of unorganized sectors, Occupational hazards, Opening of individual Bank Account, Accidental insurance etc are also conducted regularly in the operational areas.

Programs were also conducted to create awareness among SHG members and other residents in the Tikiapara project areas about the Digital Ration Card and Public Distribution System (PDS) of the West Bengal Government. These programs were facilitated by advocate Sayak Chakrabarty. A detail discussion was held on need of PDS and what amount of food has exactly been allocated per person per family in a month. Information was also provided on how the ration shops should function. After attending the program all the members said that ration shops in their communities are neither working as per the Government rule nor are giving what they should give. They have also decided to talk with the local councillor against the malfunctioning of PDS.



## Awareness on Health and Hygiene



Awareness on health and hygiene and family planning have been conducted on a regular basis.

All these awareness programs are conducted with the help of flash cards, storytelling and audio-visual methods.

The SHG members and women from the communities under the project areas took initiative and spread bleaching powder in the localities to prevent dengue and malaria and keep the surrounding clean.

## Awareness on AIDS and Other Communicable Diseases



An awareness session was organized on HIV/AIDS for the women from Jolapara Masjid Lane and Noor Muhammad Munsif lane. During this discussion they were informed what is AIDS and HIV, different means of spreading this disease, the free treatment and diagnostic centres of government etc. During this session STD/STI and TB was also mentioned.

This program helped them to know this particular disease, its prevention and the myth and facts about the disease.

## Awareness on Ecological Rights

LGWCDC took a leading role in the formation of a youth network named “Youth Challengers” where 10 partners from seven different districts of West Bengal have joined. The network mainly works on ecological rights.

During 2015-16, two youth members from LGWCDC went to Rourkela to attend the 2nd Regional Youth Convention 2015. There they had a thorough discussion on various ecological hazards the people of Bengal are facing in their day to day life due to lack of proper education and knowledge of the ecosystem.

The youths also observed important days like World Earth Day (22nd April), World Environment Day (5th June) and Water Day (22nd March). The members of the network, especially those who are associated with the organisation, took part in various workshops and capacity building trainings from time to time. LGWCDC organised a State Consultation Meeting at Dishari, Baruipur.

LGWCDC’s children and youths also took an active part in celebrating the 40th Anniversary of TDH, Germany as well as the Global Action Month 2016. The organisation had tried to raise awareness among the mass on the importance of the ecosystem and how one should take care of the Mother Earth.



# Awareness on Right to Education

Education is an important part of human life and evolution. To spread the message, LGWCDC organised awareness programs on Right to Education in different targeted communities at Lake Gardens, Tikiapara and Santoshpur areas at regular interval. At Lake Gardens, four such programs were organised where around 320 people participated.

15 meetings were held with 1375 women and 95 men to monitor the Balwadi centers, ICDS centers and formal schools where their children are going for education. External resource persons were hired to disseminate the information about Right to Education Act, importance of education for children etc.

Interface between Ward Development Committee (WDC) and Ward Education Committee (WEC) along with local councillor and club members were organised at project office. 20 persons attended the program and assured to support this type of education program for the children of poor families. WEC members requested LGWCDC to identify the drop out children and child labours and they will assist in enrolling them in formal schools in age appropriate classes.

# Awareness on Child Labour

In order to raise awareness and activism to prevent child labour among the people of the communities with which LGWCDC works, every year the World Day Against Child Labour (12th June) is observed. **During 2015-2016 the youth members took an initiative and organised a signature campaign program in front of the Tollygunje Metro Rail Station where nearly 500 passersby put their signature and valuable feedback.** What is understood from the feedbacks are that poor families are ignorant of the importance of education. As a result, children are forced into child labour. But all the people the organizers came across had expressed their opinion that this malpractice should be stopped and all children should come under the light of education.

# Formation/strengthening Children groups

Seven children groups with 157 members are functioning in four pockets of Santoshpur (24 Parganas South) while in Tikiapara there are 12 children groups. Every week group meetings are conducted where children share their feelings, problems and joy. Community facilitators held discussions on child rights, current affairs, importance of education, health and hygiene practices etc. with the children to build their knowledge. Children also take part in drawing, free-hand physical exercise, recitation, memory games etc.

LGWCDC organised two fairs for the youth. One at Nur Mohammad Munsif Lane at Tikiapara and another at Dhakuria, Kolkata. The youths conducted these fairs by holding different activities like quiz contests, rallies against Child Labour and Abuse, discussions on Importance of Education for the girl child, Schemes for youths etc.

# Child Rights Week Observation

In November 2015 children group members of the Santoshpur project area organised Child Rights Week where nearly 408 children from four communities participated. They took part in the drawing competition, quiz contest on healthy habits, passing the ball game and also staged cultural programs. A magic Show with awareness on personal hygiene and sanitation was the main attraction for the children. Local councillor, police officials of Rabindra Nagar Police Station attended the event. Police officers discussed with children about trafficking and their responsibilities.

A Children Fair was organized in association with Rebecca Belilious English medium school at Tikiapara, Howrah with the main objective to educate common people about child rights and to give children a day which they would spend to learn about their rights through different games and amusement. The theme of this program was "Right to Survival and Right to Participation". About 307 children and 85 adult spontaneously took part in the event.



## Orange Day Celebration

LGWDC organised ORANGE DAY to eliminate the violence against women and girl child at operational communities. Staff and members of SHGs organised this program. Local CBO members, SHG leaders, religious leaders were also present in the occasion. Ms. Firdausi Begum delivered her speech against domestic violence. Renowned advocate Mr. Mihir Sen of Barasat court discussed about the law against violence. Religious leader and CBO member Sk. Soud discussed about the education of girl child.

A big rally covering the 16 Bigha community with placards and banners was organised. The participants raised their voice to establish that “Men and Women have equal rights in the society”. They discussed the contemporary situation and duty of the mass to stand beside victimized women and girls. They also discussed on how to increase the number of SHG for protection of women and spread the awareness. This will continue throughout the year.



## Observation of International Women's Day

8th March is observed as the International Women's Day world wide. LGWDC works for the women and children of the society from its time of inception. The organisation celebrates this day with active participation of the members of the self help groups who are mostly the residents of the local communities of the targeted areas. The day is observed through rallies, cultural function, discussion on significance and history of the day, debate competition etc. Experts from the respective sector are invited to discuss about Human Rights and the duties of the women in the society.



This year Women's Day was observed in a different way in our Santoshpur project area as we tried to address an important issue of restriction of mobility and participation in social gatherings that muslim women who work with organisations face. In order to boost up the confidence of such women and to ensure their rights to participate, a sports event was organized on that very day. About 200 women participated in 11 different events. Prizes were also given to the winners.

## Brick Kiln Program

A great number of brick kilns function in the state of West Bengal. Here the labourers are mostly migrants from other states. Since February 2013 LGWDC started to work in the brick kilns at Akra Santoshpur in 24 Parganas South. In Akra there are currently 21 functional kilns. LGWDC started its work in Kiln No. 9 and then extended it to kiln no.1 and 5 as well. The organisation started its work with an aim to provide basic education to the children who come along with their parents to these kilns and end up as child labours. **During the reporting period, about 43 children from three brick kilns (nos. 1, 5 and 9) who worked there as child labours attended the Creative Learning Centres (CLCs) set up by LGWDC.** The classes were held 5 days a week where the children were exposed to basic education, games and art. From time to time the children were given information on child rights, proper health and hygiene, importance of education and hazards of child labourers. The staff of the project motivated the parents through FGDs regarding the need and importance of education. Capacity building trainings for the project staffs were also arranged to help them deal with these migrant families.

## Functional Literacy Program in Howrah Tikiapara

LGWDC offers opportunity to 29 women who were either deprived of getting enrolled in schools or have never studied even in Urdu medium schools or Madrasa by organizing Hindi classes. The main objective is to provide basic education to these women and help them in learning the alphabets along with basic grammar in Hindi.





# Empowerment Program

## SHG meeting, Strengthening SHGs on Social Issues, Strengthen existing SHGs and formation of new SHGs

Community facilitators are regularly visiting SHGs and their group meetings. They discuss about different social as well as political issues affecting the members of SHGs like domestic violence, child marriage, small family norms, women rights etc. These sessions are also utilized to monitor and guide the regular group activities of the SHGs, setting common goal of each SHG etc.

**Training on Micro Enterprise Development (MED)** - LGWCDC organised trainings for 42 women SHG members of nine SHG of three communities. Training were facilitated by four expert trainers. 20 women were trained on grinding and packing of different spices in a hygienic manner. After receiving training the members are now selling these grinded spices and earning a good income for themselves.

Beside this, a training on tailoring was given to 22 SHG women. They were trained to cut and stitch petty coats and salwar kamiz.

**Income Generation Activities (IGA) training for SHG members** - Ward Facilitator of LGWCDC identified the potential SHG members who are willing to start a small business or have recently started any venture. Expert resource persons were arranged for the facilitation of Income Generation Training for the old as well as newly formed SHG members of our operational areas. Facilitator discussed about trade license, linkages, risk taking factors etc of a venture.

**Support to Income Generation Activities** - Two women of two SHGs started readymade garments business and 10 members of Golap SHG of Aynalpara started spice making business after motivation and training. They were assisted financially by LGWCDC. They will repay this money to their group. This assistance will enhance their life quality.

## Self Help Groups

One of the distinct projects of LGWCDC is Narikalyan Project which was started in 2009. The objective of the project was to offer vocational training to the patients affected by tuberculosis and assisting them in joining SHG in Tikiapara and Pilkhana slums of the Howrah district. In due course of time the project expanded with the basic objective to empower the girls and women in the communities. They are trained on Karchupi, tailoring, and knitting. **During the reporting period 56 students took admission but finally 43 students completed their course. 47 SHG members attended two Leadership Trainings at Tikiapara.** Facilitators discussed about the role of a SHG leader, quality of a leader, book keeping of SHG etc. These help to operate the SHG through rotational leadership.



## Self Help Approach (SHA)

Women empowerment has been another main focus of the organization. 34 Self Help Groups are functioning in four communities with 429 women members. In Santoshpur area women were encouraged to do small savings and a small fund was created for the members for micro credit program. These women have accumulated a fund of Rs.1,45,711/- out of this amount Rs. 44,698/- is revolving as loan within the group members.

These groups were given training on operational management such as accounts management, book keeping etc. 275 women SHG members were trained on how to maintain the records and manage their group funds. Ward facilitator played a leading role in imparting this training.



Recently 20 women SHG members of 3 communities received training on Spice making and marketing by an expert trainer, 20 women SHG members received tailoring and cutting training. Community facilitators are regularly interacting with these group members so that the groups function smoothly and the development process of the communities is accelerated.

Beside economical development women are taking care of their social development. They are taking initiatives to stop early marriage. SHG members are also creating awareness against intake of alcohol. They are negotiating with local Municipal authorities for drinking water and road repair purpose.



## Exposure Visit

LGWCDC always encourages the women who are associated with the SHGs of the organisation to have exchange of ideas and thoughts with members of other organisations. For this they were taken to Kulpi in the month of February 2016, where they had sharing of ideas. About 30 members got this opportunity. Another exposure visit was organised in the month of March 2016. The SHG members visited NOSKK, Bauria.



## Vocational Training

Since its early days, LGWCDC offers different vocational training courses for young girls and women of the project area. They are given trainings on embroidery, tailoring and cutting and knitting. The organisation also provides training on beautician, massage and hair cutting. Expert trainers from the respective areas extend their support and guidance to the trainees. Every year at the end of the course the trainees appear in examinations. The pass-out candidates are bestowed with Certificates. The pass-out candidates of Tailoring and Cutting and Knitting Course are engaged in the production unit of LGWCDC.



**Music and Art:** "All work and no play makes Jack a dull boy" - LGWCDC believes in this proverb heart and soul. Thus with an aim to develop the confidence, self-discipline, cooperation, and self-motivation of the children classes on art and craft, music, dance and yoga are held once in a week. The children get lessons on the respective subjects from experienced and expert instructors who handle them with love and care. Children are also taught to be disciplined through these classes.

## Capacity Building Program and Workshops

**Staff Capacity building Training:** To acquire knowledge and skill LGWCDC conducts different training related to their work. In this year we have conducted training on documentation and reporting and Child Rights.

Health staffs are exposed to various skill training by the German Doctors - like supplementary food, breast feeding, Tuberculosis and control of malnutrition, hygiene etc. In every monthly staff meeting staffs are enlightened on different subjects like Leadership quality, communication, event management, entrepreneurship etc.



Last year staffs were specially trained on SHG formation and monitoring by use of PRA tools, result based reporting and proposal writing training for building the capacity of the staff. Besides these, various health related training were conducted by LGWCDC to build up capacity of the staff.

A Training on Self Help Approach (SHA) was held by National coordinator Ms. Kamalika Bhattacharyya (KNH) in April 2015.

Staffs received training on Integrated Management of Neonatal and Childhood Illness (IMNCI) by renowned organization CINI.



A training on Breast feeding and supplementary feeding to the child above six months was held by Dr. Soma Dutta.

Staff received training on ANC and PNC including handling the complications during home delivery by Dr. Parboti Sengupta and Dr. Krishna Rani Bhattacharjee.

A one-day Workshop was held on Detection of malnutrition and food habit (low cost home based food). Ms. Pratima Halder, Dr. Krishna Bhattacharjee facilitated it.

A Workshop on immunization was facilitated by expert resource person of South Point, St. Thomas Home. This training enhanced the capacity of the staffs and helped them to identify, take care of the patients and guide them in clinic as well as during home visits.

Two staffs attended the CPP Module-1 workshop at KKID, Coimbatore during the month of July 2015.

Two representatives of LGWCDC attended the 15th KNH Partners Meet at Bangalore in September 2015.

Four staff members attended the PPM of TDH Germany and TDH Suisse at Shantiniketan in September 2015.

Project staff of Howrah and Santoshpur attended Goal setting training at Karunaya Trust Bombay in October 2015.

Two staff members went to Youth Service Centre in Bolangir, Orissa to get an exposure on how to work in brick kilns supported by TDH, Suisse.

In November 2015 a workshop on Logical Frame Approach (LFA) was organised at LGWCDC which was facilitated by Mr. Ashish Ghosh, National Coordinator of TDH Suisse, Ms. Pallabi Sengupta and Ms. Nandita Roy of LGWCDC. In totality, 16 staffs from all the three project areas of LGWCDC and two Board Members participated in the training.

Two personnel attended the LFA workshop Organised by TDH Suisse at Puri in the month of December 2015.

A workshop on Child Protection Policy was held in the month of March 2016 where all the senior staff and community facilitators got trained. The workshop was facilitated by Ms. Malti from KKID.

Two staff members attended a workshop on Child Participation held in Raipur in March 2016. The workshop was organised by TDH Suisse.

Creche educators get regular trainings on topics like TLM preparation, Child Psychology, Child Nutrition, Multi Grade Teaching etc.



# Cultural Program

## Open House

An Open House was organized on 30th January where the production items were displayed. SHG members put up food stalls. German cookies, biscuits, cakes and other food stuffs were also on sale. Friends, well wishers and neighbouring people attended the open house and enjoyed having delicious and lip smacking food. Many products were also sold which added to the booty of the production Unit and SHG members.



## Exhibition cum sale

An Exhibition cum sale was organized at Lake Gardens and Tikiapara, before the Pujas. Several items like sari, kurti, T-shirt, baby frocks, bags, handkerchief, nighty, aprons, kitchen towels, cushion covers, table cloths, bed covers, wollen garments etc. were put up for sale. Many people of the locality visited the exhibition and a lot of items were sold.

## Excursion

Children of Creche and outlet were taken to the Zoological Garden.

Children of remedial Education and Vocational Training students of Tailoring and Beautician Course were taken to Nicco Park.

Staff members of LGWCDC were taken to Deulti for a Picnic.



## Celebration of Festivals

On 9th May children of remedial class performed songs and dance written by Gurudev Rabindranath Tagore to mark his birth anniversary.

On 23rd December Children performed songs, dance and small skits to observe Christmas.



# Networking and Advocacy

## Youth Network on Ecological Rights

LGWCDC is a partner in TDH Campaign on Youth Network for Ecological Rights and is the lead organisation in the State of West Bengal. The Youths mainly carry out this campaign under the banner Youth Network. Nine other organisations are currently in the West Bengal network. These Organisations work in the Districts of Darjeeling, North Dinajpur, Malda, Medinipore, South 24 Parganas and Kolkata.

The main activity of the network is to campaign on the following issues:

- i. Ban of usage of plastic bags
- ii. Ban on use of Chemical fertilizer
- iii. Planting of trees
- iv. Saving water

The following programs were held under this campaign:

- > Earth Day observation at Dhakuria foot bridge, Kolkata
- > World Environment Day observation at Surendranath College, Kolkata
- > Theatre Workshop at Seva Kendra Calcutta, Kolkata
- > Celebration of 40th anniversary of TDH at Birla Intitute of Technological Museum, Kolkata
- > Workshop for Youth at Rourkella
- > Workshop for Youth on Environmental Issues at Peoples Association, Lake Gardens, Kolkata
- > Core Committee Planning Meeting to decide on future activities at Peoples Association, Lake Gardens, Kolkata
- > Observation of Water Day through awareness programs in three schools in Lake Gardens, Entally and Kamarhati



## Campaign: Children on the Move - Destination Unknown

LGWCDC is a partner of TDH Campaign on Destination Unknown. LGWCDC is responsible for Howrah District. The main objective of this program is to create awareness in the community on safe migration and protection of child rights. Throughout the year various sensitization programs, street plays and interface with government officials, CBO representatives, children, youth and community members are held.

## Corporate Social Responsibilities (CSR)

> In the month of September 2015, GKB Optical organised an eye check up camp in all the three project areas of LGWCDC at Lake Gardens, Santoshpur (24 Parganas South) and Tikiapara (Howrah). About 100 women and children who were the beneficiaries were provided with spectacles as prescribed by the ophthalmologist.

> L'Oreal like the last few years organised an excursion for the children of LGWCDC during the month of October 2015. The children visited the Science City and received small gifts.

> LGWCDC got an opportunity to display their handicraft products at an exhibition organised by the German Consulate, Kolkata during the month of December 2015, at German Consulate and at Calcutta Rowing Club in January 2016 in association with Kolkata Quiz Festival.



# Achievements

- > Running the projects smoothly in all the project areas at Lake Gardens and surroundings since its inception in the year 1992
- > Giving support to 100 crèche children throughout the year
- > Providing computer education to the underprivileged children who are coming to the centre.
- > Youths have become empowered and participating in different workshops
- > LGWDC is playing a lead role in organizing the West Bengal Youth Network for the campaign on Ecological Child Rights

# Acknowledgement

- > Freunde und Förderer Lake Gardens e.V., Germany
- > Terre des hommes, Germany (India)
- > Terre des hommes Suisse
- > Sign of Hope, Germany
- > Indienhilfe e.V. Herrsching, Germany
- > "Indienhilfe (Kolkata)
- > Ärzte für die Dritte Welt, Germany
- > Kindernothilfe e.V. Germany
- > Consulate of the Federal Republic of Germany, Kolkata
- > L'Oreal
- > Bharat Petroleum
- > GKB Optical
- > Organisers of Kolkata Quiz Festival
- > Friends and well wishers



# TOGETHER IS FUN



# KNOWLEDGE IS POWER





Consolidated  
Financial  
Statement

2015-16





Ref. ....

Date .....

### Independent Auditor's Report

To the Executive Committee of **Lake Gardens Women & Children Development Centre.**

We have audited the attached Balance Sheet of **Lake Gardens Women & Children Development Centre** (herein after called **LGWCDC**) having its registered office at 164/78 Lake Gardens, Block-A, Flat-14, Kolkata-700 045 (registered under West Bengal Societies Registration Act, 1961 vide registration no. S/73111 of 1992-1993 and operating as a Non-Government Development Organization) as at 31<sup>st</sup> March 2016, also the Income & Expenditure Account and Receipts & Payments Account for the year ended on that date, annexed thereto and report as follows:

1. These financial statements are the responsibility of Lake Gardens Women & Children Development Centre's Executive committee. Our responsibility is to express an opinion on the same based on our audit;
2. We have conducted our audit in accordance with auditing standards issued by ICAI. Those Standards require that we comply with ethical requirements and plan and perform the audit to obtain reasonable assurance about whether the financial statements are free from material misstatement.

An audit involves performing procedures to obtain audit evidence about the amounts and the disclosures in the financial statements. The procedures selected depend on the auditor's judgment, including the assessment of the risks of material misstatement of the financial statements, whether due to fraud or error. In making those risk assessments, we considered internal financial control relevant to the LGWCDC's preparation of the financial statements that give a true and fair view in order to design audit procedures that are appropriate in the circumstances, but not for the purpose of expressing an opinion on whether LGWCDC has in place an adequate internal financial control system over the financial reporting and the operating effectiveness of such control. An audit also includes evaluating the appropriateness of the accounting policies used and the reasonableness of the accounting estimates made by the LGWCDC's Executive Committee, as well as evaluating the overall presentation of the financial statements.

We believe that the audit evidence that we have obtained is sufficient and appropriate to provide the basis for an audit opinion.

3. In our opinion and to the best of our information and according to the explanation(s) given to us, the aforesaid financial statements give the information required by law in the manner so required and give **a true and fair view** in conformity with the accounting principles generally accepted in India:



- a) In case of the **Balance Sheet**, of the state of affairs of the society as at 31<sup>st</sup> March, 2016;
- b) In case the **Income and Expenditure Account**, of the surplus of the society for the year ended on 31<sup>st</sup> March, 2016; and
- c) In case the **Receipts & Payments Account**, of the receipts and payments for the years ended on 31<sup>st</sup> March, 2016.

**For, A DUTTA AND ASSOCIATES**  
Chartered Accountants  
FRN: 328193E



A handwritten signature in green ink, appearing to read "Sandip Gupta".

**Sandip Gupta**  
Partner  
ICAI M. No. 304737

Date: 01/08/2016  
Place: Kolkata



**LAKE GARDENS WOMEN & CHILDREN DEVELOPMENT CENTRE**  
164/78 Lake Gardens, Block-A, Flat-14, Kolkata - 700045

BALANCE SHEET AS AT 31-03-2016		₹	₹
		As at 31-03-2016	As at 31-03-2015
<b>CORPUS AND LIABILITIES</b>		Note	
<b>CORPUS FUNDS</b>			
Corpus Fund	3	1,01,02,185.21	1,03,01,907.88
Reserves & Surplus	4	-	-
<b>CURRENT LIABILITIES</b>			
Other Current Liabilities	5	11,39,790.00	8,10,842.00
<b>TOTAL</b>			<b>1,12,41,975.21</b>
<b>ASSETS</b>			<b>1,11,12,749.88</b>
<b>NON-CURRENT ASSETS</b>			
Fixed Assets	6	9,66,033.84	11,10,555.38
Non Current Investments	7	4,11,591.00	4,11,591.00
<b>CURRENT ASSETS</b>			
Cash and Cash Equivalents	8	38,41,247.32	50,27,948.25
Current Investments	9	45,87,000.00	25,67,000.00
Other Current Assets	10	14,56,103.05	19,95,655.25
<b>TOTAL</b>			<b>1,12,41,975.21</b>
			<b>1,11,12,749.88</b>

Significant Accounting Policies and Notes

1 & 2

The accompanying notes are forming an integral part of these Financial Statements.

As per our report of even date annexed herewith

For **A DUTTA AND ASSOCIATES**

Chartered Accountants

Firm Registration No. 328193E

*Sandip Gupta*  
Sandip Gupta (M.No. 304737)  
(Partner)

Date : 01/08/2016  
Place: Kolkata

For and on Behalf of the Trustees  
Lake Gardens Women & Children Development Centre

*Suranjana Basu Das*  
Suranjana Basu Das  
President  
Lake Gardens Women & Children Development Centre  
*[Signature]*  
Secretary



**LAKE GARDENS WOMEN & CHILDREN DEVELOPMENT CENTRE**  
164/78 Lake Gardens, Block-A, Flat-14, Kolkata - 700045

INCOME & EXPENDITURE ACCOUNT FOR THE YEAR ENDED 31-03-2016		₹	₹
		For the year ended 31-03-2016	For the year ended 31-03-2015
<b>INCOMES</b>	Note		
Revenue from Operations	11	1,58,35,423.28	1,79,81,065.19
Other Income			
<b>Total Revenue</b>		<b>1,58,35,423.28</b>	<b>1,79,81,065.19</b>
<b>EXPENSES</b>			
Programme Expenses	12	47,90,641.50	45,48,198.40
Employee Benefit Expenses	13	86,71,185.00	72,80,492.00
Administrative Expenses	14	22,21,560.91	25,02,268.83
Depreciation	6	2,10,004.54	2,70,986.49
<b>Total Expenses</b>		<b>1,58,93,391.95</b>	<b>1,46,01,925.72</b>
<b>Surplus (excess of income over expenditure) before Tax</b>		<b>(57,968.67)</b>	<b>33,79,139.47</b>
<b>Tax Expenses:</b>	2.06		
(1) Current Tax		-	-
(2) Deferred Tax		-	-
<b>Total Tax Expenses</b>		<b>-</b>	<b>-</b>
<b>Surplus (excess of income over expenditure) after Tax</b>		<b>(57,968.67)</b>	<b>33,79,139.47</b>

Significant Accounting Policies and Notes

1 & 2

The accompanying notes are forming an integral part of these Financial Statements.

As per our report of even date annexed herewith

For **A DUTTA AND ASSOCIATES**  
Chartered Accountants  
Firm Registration No. 328193E

Sandip Gupta (M.No. 304737)  
(Partner)

Date : 01/08/2016  
Place: Kolkata



Lake Gardens Women & Children Development Centre  
For and on behalf of the Trustees

Sumanjana Basu Das  
President

Lake Gardens Women & Children Development Centre

Secretary



## LAKE GARDENS WOMEN & CHILDREN DEVELOPMENT CENTRE

164/78 Lake Gardens, Block-A, Flat-14, Kolkata - 700045

Statement of Receipts And Payments for the Year Ended 31-03-2016	₹ 31-03-2016	₹ 31-03-2015
<b>Opening Balance</b>		
- Cash in Hand	1,34,160.50	2,99,081.33
- Cash at Bank	48,93,787.75	24,14,613.96
<b>Add: Receipts</b>		
<b>Receipts from Foreign Grants</b>		
Grant Received from Foreign Agency	1,46,95,381.14	1,68,13,378.19
Bank Interest	1,77,444.00	89,112.00
Maturity proceeds of Fixed Deposits	27,73,288.00	25,47,376.00
Recovery of Advance to Bhai Bhai Sangha	6,250.00	9,750.00
Recovery of Advance Given	34,73,084.20	49,14,033.50
Recovery of Prepaid Rent	1,000.00	22,000.00
Gratuity received from LIC for staff	43,846.00	2,23,362.00
Inter Project Fund Transfers	2,50,81,368.46	4,09,47,795.46
Advance recovered from Lease Rent	-	8,600.00
Misc. Receipts	22,769.00	19,031.00
<b>Receipts from Local Grants</b>		
Admission Fee Collection	29,540.00	25,140.00
Collection Against Subsidised Medicines	6,687.00	4,330.00
Fish & Chicken Collection	49,915.00	50,141.00
Sale of Craft & Knitting Materials	1,65,923.00	2,07,700.00
Collection Against Food for Guest	-	490.00
Collection From Beautician Course	92,125.00	41,825.00
Collection From Exhibition	28,315.00	9,080.00
Collection From Mid Day Meal	51,719.30	42,548.00
Donation Received	2,27,415.00	1,68,983.00
Income From Open Day Celebration	15,831.00	3,425.00
Misc Income	3,042.84	35.00
Sale of Scrap Material	746.00	2,583.00
Service Charges on Revolving Fund	5,081.00	-
Membership Fees	800.00	-
Bank Interest	23,976.00	13,650.00
Mediclaim received from Insurance Co.	93,564.00	-
Recovery from Revolving Loan fund	94,640.00	1,24,648.00
Advance Recovery	3,68,412.00	3,18,154.00
Receivable received from Mahindra Project	28,415.00	-
Sishumela (IH Contribution) received	56,608.00	-

As per our report of even date annexed herewith

**For A DUTTA AND ASSOCIATES  
Chartered Accountants  
Firm Registration No. 328193E**

**Sandip Gupta (M.No. 304737)  
(Partner)**

Date : 01/08/2016  
Place: Kolkata



Lake Gardens Women & Children Development Centre  
For and on behalf of the Development Centre

**Sumanjana Basu Das  
Lake Gardens Women & Children Development Centre President**

**Secretary**



## LAKE GARDENS WOMEN & CHILDREN DEVELOPMENT CENTRE

164/78 Lake Gardens, Block-A, Flat-14, Kolkata - 700045

Statement of Receipts And Payments for the Year Ended 31-03-2016	₹ 31-03-2016	₹ 31-03-2015
<b>Less: Payments</b>		
Programme Expenses		
For IH Project	7,92,199.00	8,86,973.40
For TDH Project	1,27,960.00	83,698.00
For KNH Project	10,83,100.00	6,38,585.00
For HCDI Project	5,83,019.00	6,46,363.00
For Narikalyan Project	3,22,780.50	3,21,727.00
For SoH Project	3,89,454.00	5,75,507.50
For FuF Project	4,37,905.00	4,96,444.00
For Outreach Project	4,57,755.00	5,76,368.50
For P&PCODDM Project	1,56,473.00	
For Local Projects	3,72,451.00	1,91,507.00
Employee Benefit Expenses	67,47,921.00	58,71,761.00
Administrative Expenses	19,41,115.91	24,61,377.83
Professional Tax paid	16,780.00	12,520.00
Employee Provident Fund	15,06,332.00	12,98,185.00
TDS paid	54,871.00	66,850.00
Purchase of Fixed Assets	65,483.00	3,56,859.00
Fixed Deposit Made	45,67,000.00	25,67,000.00
Advance to Bhai Bhai Sangha	7,000.00	12,450.00
Advances Given	35,35,885.00	53,45,533.50
Outstanding Audit Fees	60,000.00	83,652.00
IEC Materials paid		19,950.00
Advance for Lease Rent	-	2,55,000.00
Gratuity Paid to Staff	43,846.00	2,29,023.00
Outstanding Expenses	41,105.00	5,200.00
Outstanding Electrical Expenses	6,280.00	-
Outstanding Salary	46,078.00	2,000.00
Outstanding Telephone Expenses	2,696.00	-
Outstanding Consultancy Fees	8,000.00	-
Outstanding Travelling Expenses	11,234.00	-
Outstanding Cook, food & Tiffin Expenses	3,942.00	-
Outstanding Mid-Term Evaluation	55,000.00	-
Paid to Compact India Pvt. Ltd, New Delhi	77,340.00	-
Paid to Malda Sahayogita Samiti	3,020.00	-
Paid to PATH Welfare Society	20,769.00	-
Paid to Birla Industrial and Technological Museum	12,260.00	-
Damage fees of EPF Payable paid	-	2,08,532.00
Inter Project Fund Transfers	2,50,81,368.46	4,09,47,850.46
PPF Expenditure	-	27,000.00
Dev Electrical	1,200.00	-
Mediclaime Paid to Staff	89,264.00	-
Credit to Revolving fund	75,000.00	1,05,000.00
<b>Closing Balance</b>		
- Cash in Hand	97,165.50	1,34,160.50
- Cash at Bank	37,44,081.82	48,93,787.75

As per our report of even date annexed herewith

**For A DUTTA AND ASSOCIATES**  
Chartered Accountants  
Firm Registration No. 328193E

*Sandip Gupta*  
**Sandip Gupta (M.No. 304737)**  
(Partner)

Date : 01/08/2016  
Place: Kolkata



Lake Gardens Women & Children Development Centre  
For and on behalf of the Trustees

*Sumanjaya Basu Das*  
**Sumanjaya Basu Das**  
Lake Gardens Women & Children Development Centre President

*[Signature]*  
**[Signature]**  
Secretary



# LAKE GARDENS WOMEN & CHILDREN DEVELOPMENT CENTRE

## SIGNIFICANT ACCOUNTING POLICIES AND NOTES TO FINANCIAL STATEMENTS

**1 NATURE OF OPERATION:**

Lake Gardens Women and Children Development Centre (LGWDC) is a non profit organisation founded in 1992 by social scientist Cecilie Sircar and her husband Late Shyamal Sircar and is registered under West Bengal Societies Registration Act 1961. The organization initially started with the objective to improve the quality of life of the girl children and women in the shanties along the railway track between Dhakura and Lake gardens station under jurisdiction of the Municipal Corporation of Kolkata.

In the beginning of the organisation LGWDC adopted a centre based integrated holistic development approach wherein joyful and remedial educational opportunities for mainstreaming, health care, vocational skill development for income generation.

The core value of the organisation is to render service to the marginalised children and women living in the slums along the railway tracks near to Lake Gardens Station, as well as Howrah and South 24 Parganas, West Bengal and is increasingly involved in community development and the eradication of malnourishment. Our work covers around 20,000 beneficiaries till date.

**2 SIGNIFICANT ACCOUNTING POLICIES:**

**2.01 Basis of Preparation of Financial Statements**

The Financial Statements have been prepared to comply in all material aspects with the notified Accounting Standards issued by ICAI. The Financial Statements are prepared under historical cost convention, on accrual basis except grant / donation received which is accounted for on cash basis.

**2.02 Use of Estimates**

The preparation of Financial Statements in conformity with the Generally Accepted Accounting Principles (GAAP) requires Management to make estimates and assumptions that affect the reported amount of assets and liabilities and disclosure of contingent liabilities at the date of the Financial Statement and the result of the operations during the reporting year end. Although these assumptions are made as per the Management's best knowledge of current events and actions, actual result may differ from these estimates.

**2.03 Fixed Assets**

**Tangible**

All Tangible Fixed Assets have been stated at historical cost less accumulated depreciation and impairment loss, if any. Cost comprises the purchase price and any attributable cost of bringing the asset to its working condition for its intended use.

**2.04 Depreciation and Amortization.**

Depreciation on Tangible Fixed Assets has been provided on the Written Down Value method at the rates adopted by the Management. The rates are disclosed in Note 6 : Fixed Assets.

**2.05 Revenue Recognition**

Revenue is recognized to the extent that it is probable that the economic benefits will flow to the Society and the revenue can be reliably measured.

Grant and Donation Incomes are recognized on cash basis and other incomes are recognized on accrual basis.

**2.06 Taxes on Income**

**Current Tax :** The Society got registration under section 12A of Income Tax Act, 1961 as Charitable Non-Government Organization vide registration no. DIT(E)/S-142/98/239 dated 14/03/2001.

As per the above registration all incomes from all of its charitable activities are exempted under section 11 of the said Act.

**Deferred Tax** is the tax effect on timing difference(s). Since the society enjoys tax exemption under section 11, no Deferred Tax Assets or Deferred Tax Liabilities have been recognized.

**2.07 Cash and Cash Equivalents**

Cash and Cash equivalents in the Financial Statement comprise cash in hand and unrestricted cash at Bank and short term investments with an original maturity of three months or less.

**2.08 Contingent Liability and Contingent Asset**

Contingent liability is disclosed for (i) possible obligations which will be confirmed only by future not wholly within the control of the Society or (ii) present obligations arising from past events where it is not probable that an outflow of resources will be required to settle the obligation or a reliable estimate of the amount of the obligation cannot be made. Contingent asset is not recognized in the financial statements since this may result in the recognition of income that may never be realized.

CORPUS FUND	₹	
	As at 31-03-2016	As at 31-03-2015
Particulars		
Opening	1,03,01,907.88	69,22,768.41
Add: Addition	-	-
Less: Adjustments for earlier year	(1,41,754.00)	-
Add: Transfer from Reserve and Surplus (Refer note-4)	(57,958.67)	33,79,139.47
<b>Closing</b>	<b>1,01,02,185.21</b>	<b>1,03,01,907.88</b>



  
 Secretary

  
 Suranjana Basu Das  
 President





## LAKE GARDENS WOMEN & CHILDREN DEVELOPMENT CENTRE

### SIGNIFICANT ACCOUNTING POLICIES AND NOTES TO FINANCIAL STATEMENTS

4	<b>RESERVES &amp; SURPLUS</b>	₹	₹				
	Particulars	As at 31-03-2016	As at 31-03-2015				
	<b>A. Surplus in Income &amp; Expenditure Account.</b>						
	Opening Balance	-	33,79,139.47				
	Add/(Less): Surplus/(Deficit) for the Year	(57,968.67)	-				
	Less: Transferred to Corpus	57,968.67	(33,79,139.47)				
	<b>Surplus - Closing Balance</b>	-	-				
5	<b>Other Current Liabilities</b>						
	Particulars	As at 31-03-2016 ₹	As at 31-03-2015 ₹				
	<b>Statutory Liabilities</b>						
	Professional Tax Payable	1,380.00	1,330.00				
	Employee Provident Fund Payable	1,28,681.00	1,10,041.00				
	Tax Deducted at Sources	8,982.00	-				
	<b>Trade Liabilities</b>						
	Payable to Compact India Pvt Ltd. For Ezee Cup	-	77,340.00				
	<b>Outstanding Expenses</b>						
	Annual Maintenance Charges	1,000.00	-				
	Audit Fees	69,000.00	60,000.00				
	Cleaning Expenses	1,188.00	-				
	Consultancy Fee	-	8,000.00				
	Cook, Food & Tillin Expenses	4,736.00	3,942.00				
	Doctor Fees	30,000.00	-				
	Electricity	-	6,280.00				
	Food & Nutrition - Carrying Charges	1,000.00	-				
	Mid-Day Evaluation	-	35,000.00				
	Outstanding Expenses	35,866.00	76,971.00				
	Rent	1,30,025.00	-				
	Running of Balwadi centres	9,000.00	-				
	Staff Salary	1,71,067.00	46,078.00				
	Telephone	-	3,375.00				
	Travelling & Conveyance	6,557.00	11,234.00				
	Payable to bhai Bhai Sanaha (Butterfly Creche)	3,500.00	-				
	Payable to Nisha, South 24 Parganas	1,600.00	-				
	<b>Unspent Balance</b>						
	Security for Rent - Project HCD1	1,50,000.00	1,50,000.00				
	Security for Rent - Project Narikalyan	2,00,000.00	2,00,000.00				
	Provision for Gratuity	1,26,257.00	-				
	IEC Materials	53,050.00	50.00				
	Payable to Dev Electrical	-	1,200.00				
	Mediclinam Payable	1,300.00	-				
	<b>Total</b>	<b>11,39,790.00</b>	<b>8,10,842.00</b>				
6	<b>Fixed Assets</b>						
	Nature of Asset [% of Depreciation]	As at 01/04/2015	Addition	Deletion	Depreciation for the Year	As at 31-03-2016	As at 31-03-2015
	<b>A. Tangible</b>						
	1. Computer & Peripherals (50%)	1,29,317.42	33,389.00	0.00	97,623.85	65,082.57	1,29,317.42
	2. Electrical Equipments (10%)	1,02,406.11	0.00	0.00	10,240.61	92,165.49	1,02,406.11
	3. Furniture & Fixture (10%)	6,63,075.96	26,900.00	0.00	68,997.60	6,20,978.36	6,63,075.96
	4. Machinery & Equipments (15%)	2,15,755.90	5,194.00	0.00	33,142.48	1,87,807.42	2,15,755.90
	<b>Total</b>	<b>11,10,555.38</b>	<b>65,483.00</b>	<b>0.00</b>	<b>2,10,004.54</b>	<b>9,66,033.84</b>	<b>11,10,555.38</b>
	<b>Note:</b> During the FY management has decided to depreciate carrying amount of Creche Material and School Materials.						
7	<b>Non Current Investments</b>						
	Particulars	As at 31-03-2016 ₹	As at 31-03-2015 ₹				
	Fixed Deposits						
	- SBI 31655015618 (Date of Maturity 04/03/2017)	4,11,591.00	4,11,591.00				
	<b>Total</b>	<b>4,11,591.00</b>	<b>4,11,591.00</b>				
	<b>Note:</b> The society has no intention to premature the FD.						



Lake Gardens Women & Children Development Centre

Lake Gardens Women & Children Development Centre

*[Signature]*  
Secretary

*[Signature]*  
President



## LAKE GARDENS WOMEN & CHILDREN DEVELOPMENT CENTRE

### SIGNIFICANT ACCOUNTING POLICIES AND NOTES TO FINANCIAL STATEMENTS

8	Cash and Cash Equivalents.	As at 31-03-2016 ₹	As at 31-03-2015 ₹
	<b>Particulars</b>		
	(a) Balances with Banks	37,44,081.82	45,03,767.75
	(b) Cash in hand	57,165.50	1,34,150.50
	<b>Total</b>	<b>38,41,247.32</b>	<b>50,27,948.25</b>
9	<b>Current Investments</b>	As at 31-03-2016 ₹	As at 31-03-2015 ₹
	<b>Particulars</b>		
	Fixed Deposits		
	- SBI 3455390965	-	25,67,300.00
	- SBI 35644233375	20,00,000.00	-
	- SBI 35576359791	25,67,000.00	-
	<b>Total</b>	<b>45,67,000.00</b>	<b>25,67,000.00</b>
10	<b>Other Current Assets</b>	As at 31-03-2016 ₹	As at 31-03-2015 ₹
	<b>Particulars</b>		
	Advances for Renovation to Bhai Bhar Sanjha	3,450.00	2,700.00
	Prepaid Rent	21,503.25	27,563.25
	Staff Advance	1,98,794.39	5,56,693.00
	Security deposit for Rent	3,50,000.00	3,50,000.00
	Advance for Lease Rent	2,46,400.00	2,46,400.00
	Advances	9,392.50	322.00
	Accrued Interest in Fixed Deposits	94,733.00	1,97,748.00
	Tax Deducted at Source	48,507.00	37,447.00
	Disallowed expenditure	178.00	-
	Resolving Fund	1,66,238.00	4,55,878.00
	Security Deposit		
	Cairns Telecom	2,000.00	2,000.00
	Rabindra Sarobar Stadium	500.00	500.00
	CESC Ltd.	11,887.00	11,887.00
	Usha Martin Telecom Ltd.	1,500.00	1,500.00
	Reimbursable from Mahindra Project	-	28,415.00
	Sismumala Contribution non-recoverable	-	56,608.00
	<b>Total</b>	<b>14,56,103.05</b>	<b>19,95,655.25</b>
11	<b>Revenue from operations</b>	For the year ended 31-03-2016 ₹	For the year ended 31-03-2015 ₹
	<b>Particulars</b>		
	Income from Foreign Fund		
	Grant received from Foreign Agency (refer Note for Details)	1,16,95,381.14	1,68,13,378.19
	Bank Interest	1,77,444.00	89,112.00
	Interest on Fixed Deposits	2,61,482.00	5,08,645.00
	Income from Local Fund		
	Admission Fee Collection	29,540.00	25,140.00
	Collection Against Subsidized Medicines	6,687.00	4,330.00
	Fish & Chicken Collection	49,915.00	50,141.00
	Collection from Dakshinagan Counter	15,580.00	25,140.00
	Sale of Craft & Knitting Haberdasheries	1,47,343.00	1,82,560.00
	Collection Against Food for Guest	-	490.00
	Collection from Revolucion Course	92,125.00	41,825.00
	Collection from Exhibition	25,315.00	9,080.00
	Collection from PWD Day Meet	51,719.30	47,548.00
	Donation Received	2,27,415.00	1,68,983.00
	Income from Open Day Celebration	15,831.00	3,425.00
	Misc Income	3,042.84	35.00
	Sale of Scrap Material	745.00	2,583.00
	Service Charges on Revolving Fund	5,081.00	-
	Membership Fees	800.00	-
	Bank Interest	23,978.00	13,650.00
	continued ...		
	<b>Total</b>	<b>1,58,35,423.28</b>	<b>1,79,81,065.19</b>



Lake Gardens Women & Children Development Centre

*[Signature]*  
T. Secretary

Lake Gardens Women & Children Development Centre

*[Signature]*  
President



## LAKE GARDENS WOMEN & CHILDREN DEVELOPMENT CENTRE

### SIGNIFICANT ACCOUNTING POLICIES AND NOTES TO FINANCIAL STATEMENTS

11 Note: Details of Grant received				
Particulars		Date of Receipt	Amount received in FY 2015-16	Amount received in FY 2014-15
Name of Project	Particulars of Donor			
TDH	TERRE DES HOMMES DEUTSCHLAND E.V. RUPPENKAMPSTRASSE 11 A, D-49084 OSNABRUECK GERMANY	24.04.2015 12.10.2015 16.02.2015	1,60,355.72 1,73,661.36 89,951.56	1,78,873.65
SIGN OF HOPE	SIGN OF HOPE E.V. GERMANY HOFFMUISZEICHEN, SCHNECKENBURGSTR. 11D D-78467 KDMSTADT, GERMANY	-	-	5,62,000.00
NARIKALYAN	AERZTE FUER DIE DRITTE WELT GERMAN DRS. FOR DEVELOPING COUNTRIES OFFENBACHER LANDSTR. FRANKFURT - 60599	24.04.2015 24.06.2015 24.09.2015 04.01.2016 30.03.2016	1,13,850.00 2,96,842.00 2,96,842.00 2,96,842.00 4,81,465.00	16,34,106.00
OUTREACH	AERZTE FUER DIE DRITTE WELT GERMAN DRS. FOR DEVELOPING COUNTRIES OFFENBACHER LANDSTR. FRANKFURT - 60599	24.06.2015 24.09.2015 28.12.2015 30.03.2016	4,12,842.00 3,46,842.00 3,46,842.00 4,00,578.00	13,81,682.00
INDIENHILFE	INDIEN HELFE HERRSCHING HERRSCHING, GERMANY	19.05.2015	30,00,000.00	27,00,000.00
CHDP - TIKIAPARA	HOLISTIC CHILD DEVELOPMENT INDIA C.N.I. BHAWAN, 2ND FLOOR, ROOM NO. 204, 15, PANDIT PANT MARG, NEW DELHI (as 2nd Receipt)	-	-	19,19,282.00
CHDP - TIKIAPARA	KINDER NOT HELFE DUSSELDORFER LANDSTRASSE 180 47249 DUISBURG GERMANY	09.10.2015 29.01.2016	10,34,639.51 6,24,734.09	-
ICDP - SANTOSHIPUR	HOLISTIC CHILD DEVELOPMENT INDIA C.N.I. BHAWAN, 2ND FLOOR, ROOM NO. 204, 15, PANDIT PANT MARG, NEW DELHI (as 2nd Receipt)	-	-	26,56,036.00
ICDP - SANTOSHIPUR	KINDER NOT HELFE DUSSELDORFER LANDSTRASSE 180 47249 DUISBURG GERMANY	26.10.2015 04.02.2016	3,30,855.90 6,24,077.94	-
FREUDE UND FORDERER	FREUDE UND FORDERER LAKE GARDENS E.V. GERMANY VR-BANK RHEIN-ERFT EG, BLZ 37161289 KONTO:1015231014	20.04.2015 14.12.2015 17.03.2016	20,12,715.00 8,57,146.96 22,36,591.00	57,81,298.54
P&PCDDMP	TERRE DES HOMMES SUISSE 31, CHEMIN FRANK TOMAS 1223 COLOGNY/GERMANY	04.11.2016	5,57,706.00	-
<b>Total</b>			<b>1,46,95,381.14</b>	<b>1,68,13,378.19</b>



Lake Gardens Women & Children Development Centre

*Sumanjana Basu Das*  
President

Lake Gardens Women & Children Development Centre

*[Signature]*  
Secretary



## LAKE GARDENS WOMEN & CHILDREN DEVELOPMENT CENTRE

### SIGNIFICANT ACCOUNTING POLICIES AND NOTES TO FINANCIAL STATEMENTS

12	Programme Expenses	For the year ended 31-03-2016	For the year ended 31-03-2015
Particulars			
<b>FOR PROJECTS FUNDED BY FOREIGN FUNDERS</b>			
<b>FOR IH PROJECT</b>			
C. Running Expenses- Institutional Requirements			
C.1. Monthly Review and Planning		7,098.00	5,253.00
C.2. Half Yearly Capacity Building Training		-	3,943.00
C.2. Workshop on Child Protection Policy		2,146.00	-
C.3. Refresher Training on Joyful Learning		-	750.00
C.3. Quarterly Capacity Building Training for Creche		15,322.00	-
C.4. Quarterly Refresher Training on RTE, Child Nutrition		10,849.00	-
C.5. Workshop on Child Protection Policy, KKID		21,060.00	-
D. Running expenses - Implementation			
D.1. Running Expenses- Education		7,682.00	5,779.50
D.2. Running Expenses - Health		1,99,088.00	1,95,846.00
D.3. Running Expenses - Nutrition		4,36,583.00	5,19,753.90
D.4. Family to Community level Activities			
D.4.1. Monthly Parents Meeting for Each Crche		46,261.00	29,608.00
D.4.2. Family Hygiene Kit		-	29,380.00
D.4.2. Job Skill Training		-	1,77,160.00
D.4.2. Workshop on Child Rights with Community Mother		8,580.00	-
D.4.3. Family Hygiene Kit		42,700.00	-
D.4.4. Job Skill Training		290.00	-
<b>FOR TDH PROJECT</b>			
District Level Orientation Meetings		35,836.00	47,032.00
Core Committee Meeting		13,848.00	-
Core Committee Workshop		10,929.00	15,898.00
Workshop with Youth Partner Organizations		44,244.00	14,051.00
International Child Rights Week		-	6,797.00
World Water Day		8,624.00	-
International Environment Day		10,661.00	-
World Earth Day		17,398.00	-
<b>FOR ICDP (KNH) PROJECT</b>			
A. Program Cost			
A.1 Education			
A.1.1 Social Mobilisation		1,40,954.00	1,78,229.00
A.1.2 Sensitization Meeting with Parents		1,16,258.00	86,407.00
A.1.3 Running and Functioning 08 Balwadis		1,36,005.00	98,396.00
A.1.5 Training on ICDP Staff		27,575.00	23,395.00
A.1.5 Interface between WBC and WEC/SMC		5,748.00	-
A.1.8 Formation and Strengthening of Children		11,736.00	3,449.00
A.1.8 Organising Children in Groups		25,990.00	-
A.1.9 Stationaries for Monitoring		-	2,348.00
A.1.9 Observation of International Child Rights Week		15,072.00	-
A.1.10 Capacity Building on Quality Education		19,621.00	-
A.2 Health Program			
A.2.1 Sensitization and Motivating Mother		1,17,245.00	83,079.00
A.2.2 Capacity Building of Mother Committee		15,522.00	-
A.2.3 Quarterly Meeting with Mother Committee		18,681.00	-
A.2.4 Follow up Trainings of Volunteer		20,429.00	-
A.2.4 Quarterly Meeting with Mother		-	7,550.00
A.2.5 Inputs and Follow up Training		14,541.00	-
A.2.6 Formation of Youth Group		7,383.00	1,075.00
A.2.6 Orientation of Adolescent Girls		30,002.00	-
A.2.7 Referral Service		-	200.00
A.3 Livelihood			
A.3.1 Assessment and Identification of IGA needs		50,275.00	-
A.3.1 Awareness Session with Community		19,376.00	75,667.00
A.3.2 Planning for Income Generation Activities		18,523.00	-
A.3.3 Training on NED		30,843.00	-
A.3.4 IGA Training for SHG Members		41,759.00	-
A.3.5 Support to IGA		18,147.00	-
A.3.5 Awareness Session with Community Members		29,852.00	-

continued ---



Lake Gardens Women & Children Development Centre

Lake Gardens Women & Children Development Centre

  
**N. Secretary**

  
**Sunanjana Basu Das**  
 President

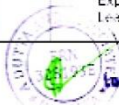


## LAKE GARDENS WOMEN & CHILDREN DEVELOPMENT CENTRE

### SIGNIFICANT ACCOUNTING POLICIES AND NOTES TO FINANCIAL STATEMENTS

12 Programme Expenses	Particulars	For the year ended 31-03-2016 ₹	For the year ended 31-03-2015 ₹
	A.4 Women Empowerment		
	A.4.2 Training on Operational Mgmt.	17,217.00	15,621.00
	A.4.3 Strengthen the Existing SHGs	2,350.00	-
	A.4.3 Training on Orientation Management to SHG Leaders	40,029.00	-
	A.4.7 Observat on of International Women Day	9,870.00	-
	A.4.7 Training on Strengthening of SHG	15,272.00	5,490.00
	A.4.8 Enterprise & Technical Planning	9,400.00	-
	A.4.9 Capacity Building of Target Group	-	27,494.00
	<b>FOR ICDDP (KNH) PROJECT</b>		
	A.5 Capacity Building of Staff		
	A.5.1 Coordination and Management Training	27,200.00	30,359.00
	A.5.2 Orientation Training Field Staff on SHG Format	9,461.00	-
	A.5.3 Workshop on Quality Education	-	5,847.00
	A.5.3 Workshop on Monitoring System Development	35,879.00	-
	A.5.4 Handholding and Capacity Building	-	3,169.00
	A.5.4 Workshop on Result Based Reporting	185.00	-
	<b>FOR CHDP (HCDI) PROJECT</b>		
	<b>Direct Expenses on Project Activities</b>		
	A.1 Reducing Malnutrition in Children	2,79,707.00	-
	A.2 Promoting Child Survival & Safe Motherhood	1,39,657.00	-
	A.3 Reducing Child Marriage	47,601.00	-
	A.4 Promoting Small Family norm among the Target Community	16,081.00	-
	A.6 Staff Capacity Building	8,396.00	-
	<b>Training/ Awareness Program</b>		
	Strengthen of Existing SHG	10,924.00	31,253.00
	Awareness Session with Community on Various Folate	-	23,865.00
	Awareness Generation Session on Personal Hygiene	25,740.00	19,877.00
	Community Meeting With Stake holder	-	19,738.00
	Formation & Strengthening of Children Group	20.00	21,853.00
	Formation & Strengthening of Youth Group	-	8,781.00
	IEC Material Development	-	10,036.00
	Life Skill Education Program	10,077.00	19,724.00
	Mit Evaluation Programme	-	1,10,000.00
	Mother Orientation Program	24,895.00	22,027.00
	Organizing School Health Sess on	10,092.00	37,781.00
	Quarterly Meeting with SHG Representative	-	10,036.00
	Rational Service	311.00	730.00
	Social Mobilization	25,884.00	14,985.00
	Teacher Orientation Sess on	525.00	4,904.00
	Traditional Birth Attendant Orientation Program	-	6,636.00
	Youth Group Orientation Programme	3,505.00	-
	Women Day Celebrat on	-	5,690.00
	<b>Health Program</b>		
	Check Up equipments	-	6,000.00
	Pezbe Paste	-	1,20,044.00
	Medicines & Consumables	-	24,578.00
	Nutrimix & Milk	-	1,20,225.00
	<b>FOR NARIKALYAN PROJECT</b>		
	<b>A:- VOCATIONAL TRAINING</b>		
	1. Tailoring	37,299.00	40,658.00
	2. Embroidery	4,405.00	3,734.00
	3. Knitting	3,565.00	-
	4. Beautician Course	37,017.00	34,819.00
	Annual Maintenance for Craft Machine	11,000.00	2,000.00
	<b>B: EDUCATION PROGRAM</b>		
	Exposure Material	2,063.00	1,712.00
	<b>C: SUPPLEMENTARY NUTRITION</b>		
	Emergency Medical Support	377.00	660.00
	Supplementary Nutrition	1,54,588.50	2,00,610.00
	Training on Low Cost Nutrition	9,995.00	8,901.00
	<b>D:- WOMEN GROUP CAPACITY BUILDING TRAINING</b>		
	Exposure Visit	26,290.00	-
	Leadership Training	12,000.00	9,000.00

continued ---



Lake Gardens Women & Children Development Centre

*[Signature]*  
R. Secretary

Lake Gardens Women & Children Development Centre

*[Signature]*  
President



**LAKE GARDENS WOMEN & CHILDREN DEVELOPMENT CENTRE**

**SIGNIFICANT ACCOUNTING POLICIES AND NOTES TO FINANCIAL STATEMENTS**

12	Programme Expenses	For the year ended	For the year ended
		31-03-2016	31-03-2015
	Particulars		
	Materials for Trainings	2,289.00	1,991.00
	Refreshment at Training	15,510.00	10,600.00
	Travelling for Trainer	4,992.00	769.00
	<b>FOR SOH PROJECT</b>		
	Boys Technical Course		1,47,762.00
	Cook, Food, Tillin	3,01,897.00	2,90,373.50
	Income Generation	2,500.00	18,500.00
	Medical Expenses	15,789.00	76,685.00
	School Materials	75,304.00	125.00
	<b>FOR FIVE PROJECT</b>		
	Awareness & Training Program Expenses	2,322.00	8,348.00
	Brochures Expenses	15,589.00	2,363.00
	Community Development Program	-	15,961.00
	Refreshment at SHG Meeting	9,392.00	10,229.00
	Health Program		
	Cleaning Expense	17,487.00	24,349.00
	Medical Expense	2,143.00	1,100.00
	Medical Support	-	1,000.00
	Supplementary Nutrition	1,750.00	43,355.50
	Mother & Child Course	1,30,500.00	1,53,230.50
	Recreational Program		
	Christmas Gift & Celebration	1,68,751.00	2,01,250.00
	Exposure Visit	42,070.00	-
	Vocational Program		
	Reduction & Massage Course	31,674.00	29,004.00
	Craft Material	6,000.00	7,221.00
	Exhibition	4,345.00	-
	<b>FOR OUTREACH PROJECT</b>		
	Awareness & Training	31,257.00	16,762.00
	Special Training	13,865.00	-
	Dieting/fooding/security	45,445.00	41,438.00
	Doctor visit	1,40,000.00	-
	Beees Cup	-	1,95,236.00
	Equipments	5,175.00	-
	Medicine	75,463.00	64,368.50
	Nutrimix & Milk	1,62,875.00	2,32,078.00
	O17 Jaquary	39,214.00	1,67,825.00
	<b>FOR TDH-SUISSE PROJECT</b>		
	<b>101 Child Labour Situation will be assessed in terms of basic education and protection both at origin and destination</b>		
	10101 Situational Assessment of the Children and the family would be carried out at both origin and destination	50,000.00	-
	10102 Start orientation and training of Child Labour situation	10,720.00	-
	10104 Group meeting / PRA to involve children, families and other actors at destination point	9,785.00	-
	10105 Group meeting / PRA to involve children, families and other actor	17,950.00	-
	10106 Special dialogue with the other actors at destination point	18,302.00	-
	<b>102 Ensure qualitative development of children through</b>		
	10201 establishment of the creative Learning Centre (CLC) for providing Creative learning and basic education (set-up cost 10000 + running cost	11,375.00	-
	<b>103 Evolve behavioural change among the community and other actors towards child labour situation</b>		
	10301 Meeting with community and other actors at the destination point on child labour situation and its ill effects	20,000.00	-
	10302 Exchange special dialogues with employers, local councilors, Government Officers and local school teachers at destination point	10,304.00	-
	10304 Meeting with community and other actors at the origin point on unsafe migration and protection of the children	8,232.00	-

continued ---



Lake Gardens Women & Children Development Centre

*[Signature]*  
Secretary

Lake Gardens Women & Children Development Centre

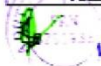
*[Signature]*  
President



## LAKE GARDENS WOMEN & CHILDREN DEVELOPMENT CENTRE

### SIGNIFICANT ACCOUNTING POLICIES AND NOTES TO FINANCIAL STATEMENTS

12 Programme Expenses		
Particulars	For the year ended	For the year ended
	31-03-2016	31-03-2015
₹		
<b>FOR PROJECTS FUNDED BY INDIAN FUNDERS</b>		
Benefit to Student	48,708.00	31,081.00
Beautician Materials	32,000.00	-
Cook/Food/Tiffin Expenses	54,101.00	-
Craft Material	1,47,433.00	71,957.00
Creche Material	-	7,822.00
Exhibition	6,097.00	7,618.00
Foundation Day expenses	9,801.00	-
Health & Hygiene Program	24,980.00	23,400.00
Knitting Materials	21,564.00	24,144.00
Medical Support	13,581.00	1,800.00
Medicine & Consumable	704.00	-
Mid Day Meal Expenses	4,181.00	3,191.00
Training/Meeting/Workshop/Programme	6,840.00	-
<b>Total</b>	<b>47,90,641.50</b>	<b>45,48,198.40</b>
13 Employee Benefit Expenses		
Particulars	For the year ended	For the year ended
	31-03-2016	31-03-2015
₹		
Salary / Remuneration to Staff	61,90,999.00	57,93,314.00
Salary / Remuneration to Part timers	57,575.00	51,700.00
Allowances to Staff	9,42,483.00	8,89,886.00
Employer's Contribution to PF (including Admin Charges)	7,99,304.00	7,00,438.00
Health Insurance for Staff	95,662.00	91,582.00
Gratuity Premium	1,26,237.00	4,430.00
Educational Assistance to Staff/ Children	86,903.00	77,163.00
Exorata	4,01,302.00	1,38,929.00
PF Contribution for Staff	-	27,600.00
<b>Total</b>	<b>86,71,185.00</b>	<b>72,80,492.00</b>
14 Administrative Expenses		
Particulars	For the year ended	For the year ended
	31-03-2016	31-03-2015
₹		
Payment to Auditors	-	-
- An Audit Fees	65,000.00	60,000.00
Bank Charges	4,509.00	5,580.00
Consultancy Fees	35,300.00	1,91,746.00
Electricity Expenses	48,327.00	50,907.00
Excess Audit Fee Provision of earlier years	-	(16,124.00)
Fire & Burglary Insurance	-	5,936.00
Legal Expenses	18,512.00	1,800.00
Meeting Expenses	-	786.00
Staff Welfare	5,978.00	3,500.00
Staff Meeting - Monthly / quarterly	-	10,209.00
Staff Training / workshops	2,648.00	34,175.00
Office expenses	70,480.00	63,298.00
Other Expenses	7,118.91	44,616.33
Printing & Stationery	2,12,501.00	2,03,604.50
Cash in Transit Insurance Expenses	3,393.00	3,329.00
Rent, Rates & Taxes	9,09,348.00	10,38,395.00
Repairs & Maintenance	1,33,630.00	1,24,250.00
Telephone Expenses	69,997.00	58,931.00
Travelling & Conveyance	4,99,090.00	5,52,467.00
Development of JEC Material	1,20,000.00	-
Commission to Dakshinapuri (Coutner Sales Girls)	1,850.00	1,522.00
Medical Support	-	3,912.00
Open day celebration	4,260.00	2,819.00
Donation & Subscription	1,100.00	16,615.00
<b>Total</b>	<b>22,21,560.91</b>	<b>25,02,268.83</b>



Lake Gardens Women & Children Development Centre

*(Signature)*  
16. February

Lake Gardens Women & Children Development Centre

*(Signature)*  
President



**LAKE GARDENS WOMEN & CHILDREN DEVELOPMENT CENTRE**

**SIGNIFICANT ACCOUNTING POLICIES AND NOTES TO FINANCIAL STATEMENTS**

<b>15</b>	<b>Segment Reporting</b> The Society operates in a single reportable segment i.e. Social Development, which have similar risk and returns for the purpose of AS 17 on 'Segment Reporting' issued by ICAI. The Society does not have any reportable Geographical Segment.
<b>16</b>	<b>Previous Year Figures</b> Previous year's figures have been rearranged and regrouped wherever necessary.

As per our report of even date annexed herewith  
**For A DUTTA AND ASSOCIATES**  
 Chartered Accountants  
 Firm Registration No. 328193E

*Sandip Gupta*  
**Sandip Gupta (M.No. 304737)**  
 (Partner)



Date : 01/08/2016  
 Place: Kolkata

Lake Gardens Women & Children Development Centre  
 For and on behalf of the Trustees

*Sumanjaya Basu Das*  
**Sumanjaya Basu Das**  
 President

Lake Gardens Women & Children Development Centre

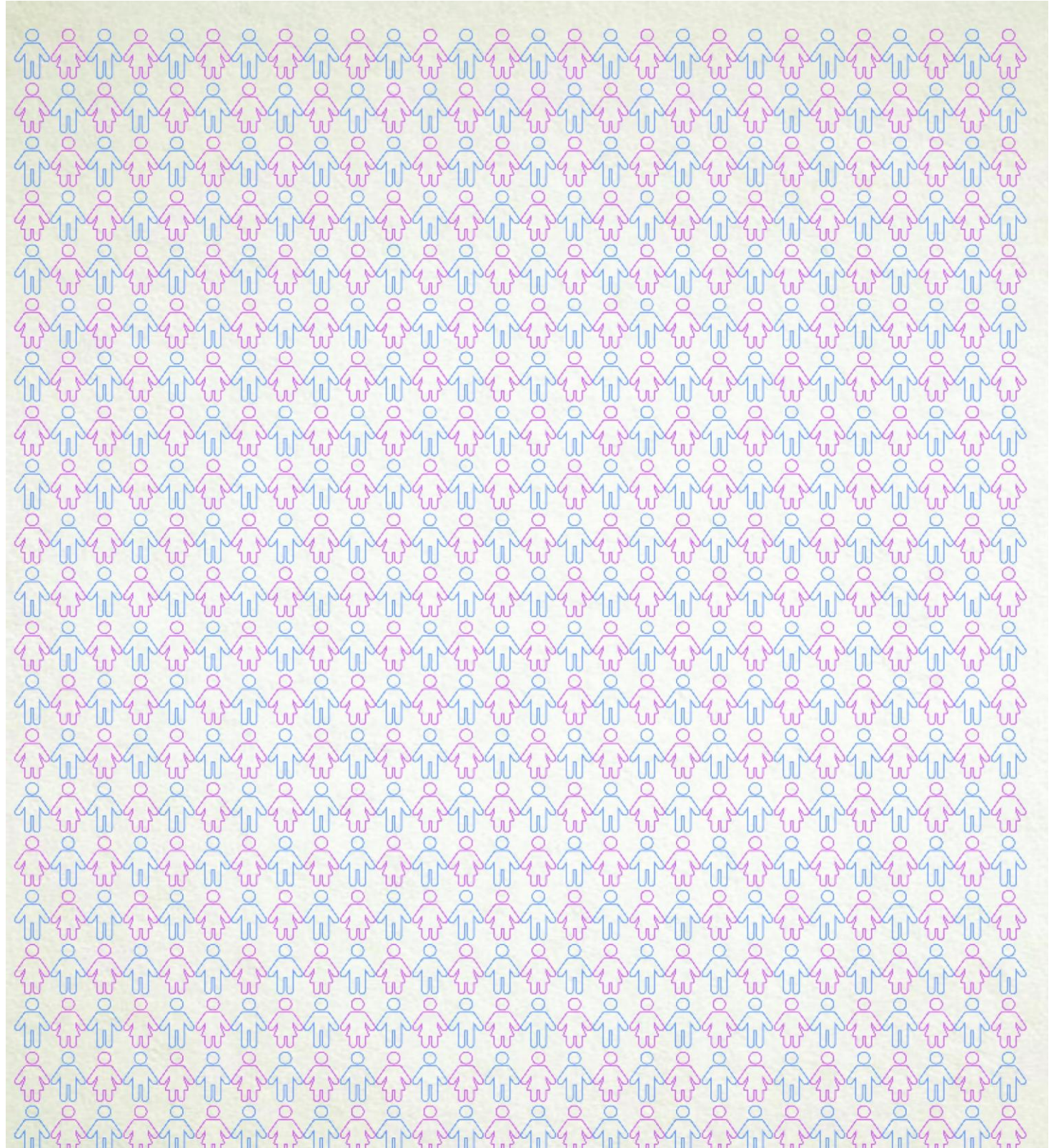
*[Signature]*  
**[Signature]**  
 Joint Secretary





# WILL IS POWER





**LAKE GARDENS WOMEN &  
CHILDREN DEVELOPMENT CENTRE**

Head Office: 648 Lake Gardens, Kolkata 700045, India

Tel: +91 33 24171340

Regd. Office: 164/78 Lake Gardens, Flat A14, Kolkata 700045, India

Email: [lgwcdc@hotmail.com](mailto:lgwcdc@hotmail.com) Visit us at: [www.lgwcdc-kol.org](http://www.lgwcdc-kol.org)